

April 2, 1987.

and hears simony'

and covering asbestos which is presumed to be less than removing asbestos and placing it with a hazardous material.

"I don't believe in covering up asbestos," Ferris stated.

Board news: Board President Linfante was glowingly praising fellow board members for their creation of the March 28 school presentation that attracted hundreds of Belleville parents, teachers and citizens.

one don't pay'

Prosecutors and authorities have reasoned that I have seen the big mob trials in New York and Essex as the end of the end for the Mafia. They cite statements by prominent Italian-American



Bifani on...

Belleville

as Rudolph Giuliani, the flamboyant mob-busting Manhattan prosecutor, who points to many intriguing factors which presumably have led to the mob's decline.

The first, says the prosecutor, is the fact that there just aren't a whole lot of young Italian-American guys these days who consider the Mafia when making a career choice.

These days, long-standing Italian-American communities like Belleville are far more likely to produce doctors, lawyers, engineers, and government leaders than hitmen, loansharks and other assorted crook types.

And now, with this year's big mob trials on both sides of the Hudson, many potential mob recruits will no doubt be dissuaded from a life of mob affiliation. Let's face it, with all the current "crime-don't-pay-film-at-11" coverage, the point has to hit home after awhile.

Among the twenty or so alleged Mafia men on trial downtown are three Bellevillites. These fellows, who range in age from 35 to 43, are a generation removed from the area's Italian-American teens who are needed to replenish the local mafia's ranks.

With this in mind, then, it is the youth, the next generation, that can crush the Mafia more than any prosecutor or court of law. By simply refusing to continue in the footsteps of the older guys, the young people can effect the death of the mob by attrition.

And, with all of the special vocational, gifted, and college preparatory programs offered at (continued on page 8)



Expo's a smash...

Belleville Expo '87, held last Saturday at Belleville High School attracted an estimated 2000 townspeople, who toured countless displays from nearly every township school, extra curricular, civic, and government organization. School vendors were also on hand with exhibits, as were town newspapers. Pictured above (r.) is Michele Suchomel of Malone Avenue, a 1986 BHS graduate, at left is an unidentified school spirit. (Photo by Christopher Bifani)

Commission candidate profile:

Gabe Nazziola: "Attention to detail"

Commission candidate Gabriel Nazziola was accompanied by his wife and campaign manager, Camille Nazziola, as he presented his nominating petitions to the Belleville Township Clerk, Mary Lou Hood. The candidate submitted 296 petitions, 125 more than the amount required (171) to be put on the ballot.

Candidate Nazziola has been an active and outspoken member of the community for many years, his face and voice have become familiar at town meetings, Board of Education meetings, planning board meetings, zoning board meetings and rent leveling board meetings as he argues the causes of the individual taxpayers.

Having served three years as a member of the Belleville Board of Education, Nazziola believes he is

"extremely dedicated, energetic and knowledgeable about whatever subject matter he addresses, always doing the homework and giving more than normal attention to detail, and of unimpeachable integrity," he said.

The candidate added, "For most people, attention to detail is a tedious and annoying task causing most people to get bent out of shape! Since I have been a self-employed insurance agent for over 24 years in a business that is the very essence of detail, it has become a necessary and familiar element of my everyday life. I believe it has been the inability of our public office holders to attend to the very necessary details of running our government which has allowed the detail to run away with itself and resulted in this

Township getting into one financial mess after another."

"You don't have to ask too many Bellevillites what their primary 'beef' is in our Township before your ears start ringing... TAXES... TAXES... TAXES! I firmly believe that no matter what political scheming, plotting or promising goes down during this campaign, the taxpayers of Belleville are going to be just as smart and decisive as the taxpayers of Essex County were just a few months ago. They too will deliver the same unmistakable message at the voting booths to those incumbents running for re-election; that they are sick and tired of self-serving and irresponsible fiscal mismanagement in government and that it is time for a clean sweep change... a la Goodbye Shapiro!"

The picket that wasn't

CCB decides not to protest Expo '87

The Concerned Citizens of Belleville were out in force at last Saturday's EXPO '87, but it wasn't at a presentation table - or in a picket outside.

"We had a meeting and decided it wouldn't be in the best interests of the schoolchildren to picket," said CCB member Ed Torti. Instead, the group attended the event en masse wearing CCB shirts and peacefully touring the exhibits.

It was a mild conclusion to the exposition's controversial under-

side, which began when CCB President Vincent Frantantoni asked EXPO '87 committee members if his citizens group could participate in the event.

However, the EXPO '87 committee agreed "by consensus" to refuse the group's request.

Critics charged the denial was politically motivated while supporters argued that the group is not "directly involved with educating."

Critics further charged that the timing of the exposition was such

that it came right before the April 9 school board election, and would thus help the budget to pass and the incumbents to win re-election.

Supporters, however, have countered that the early spring was the best time to hold the event because winter is over and people are anxious to get out again.

By and large, the citizens group enjoyed their day at EXPO, taking time out to pose for a group picture on the high school steps and generally enjoying the exhibits. (C.B.)

Lions roar...



Fifteen years of service — Belleville Lions Club presented Andy Colannino (right) with his 15 year award. Colannino is a past president of the club and president of Modern Millwork, Belleville. Don Ross, Secretary of the Lions Club is at left. (Photo by Kondreck)



Honoring 'Doc' — at the Forest Hill Field Club. At its regular meeting on March 5, the Belleville Lions Club honored Emil "Doc" Horak, retired Assistant Director of Clara Maass Medical Center, for his many years of service to the Lions Club. Lions Club President Dennis Mautone (center) is presenting plaque to Horak (right). Don Ross, Secretary of Lions Club is at left. (Photo by Kondreck)

...president of the town... a town... show... of this... at 66, is the... schoolteacher... heart when it...

...his participation... courses as one of... contributions to the... his current term.

...said his love for... and his desire to improve... of education in Belleville... his main reasons for seeking... election. He adds that politics... could be kept out of the schools, and he regrets that both political parties endorsed opposing candidate Patricia Pisano.

Lone challenger Patricia Pisano points out that she is the only candidate with children currently in the Belleville school system.

"As a wife, mother of three, friend, neighbor and as the next board of education member working toward our children's future, any decision I make will not only affect you, but my family as well," she states.

Pisano believes that the quality of educational services must be improved by better use of education funds and she further advocates better relations with parents, staff, and community leaders.

Pisano is employed as a confidential secretary with the Essex County Judicial System. She maintains that she is trained in contracts, budget control and bookkeeping.

Also on the ballot in the April 7 election is a controversial \$18 million 1987 school budget which would raise taxes by some 20 points while eliminating 26 positions from the payroll.

The proposed budget would also eliminate remedial summer school and cut back on a variety of other programs and services. (C.B.)

Kelly said he will continue his fight for a more equal distribution of state aid particularly in the areas of welfare costs and for expenses of running the state judiciary locally, programs that, according to Kelly, put an unfair burden on local property owners.

During his first term, Kelly authored the Jobs Training Act, officially known as the Governor's Employment and Training Initiative (GETI). This legislation provides training for New Jersey's economically disadvantaged and displaced workers.

Kelly was born in Jersey City. He received a bachelor of arts degree in accounting from St. Peter's College.

He is a veteran of World War II, having served with General MacArthur's staff in the South Pacific from 1944 to 1946.

President of Nutley Savings & Loan Association, Kelly previously served as Essex County chairman of the American Cancer Society fund drives in 1984 and 1985. He is active in the Elks Club effort to help abused children and is a trustee of his local parish.

He and his wife, the former Elizabeth Mele, are the parents two sons and two daughters.

The Belleville Times

24 pages in two sections

Contents:

Section 1

Belleville Briefly 2
Editorial 4, 6
Bookmarks 7
Events in the area 11
Social news 12

Section 2

Sports 13, 14
Recreation Roundup 14
Obituaries 15

School Board Election

Interviews on OBC-TV

See page 17

Belleville briefly...

Tailoring school courses to meet industry's needs

BHS vocational advisory council has computer awareness program

A computer awareness program was conducted during the March meeting of the Belleville High School Vocational Advisory Council.

Council members Robert Notare and Anthony Lusnia brought in their personal computers and equipment for the program. Notare, a programmer with ADP, explained the basic functions of the computer and how the computer is being used in in-

dustry. He included tips and suggestions on how to select suitable computer software.

Lusnia, project director with Hoffmann-LaRoche, demonstrated the use of a computer for developing construction schedules, material cost sheets, progress reports and worker utilization reports.

The Belleville Vocational Advisory Council is a group of interested and concerned citizens.

High School faculty and Board of Education members. Membership is open to residents of Belleville or are employed in or connected with a business related to the vocational areas at the High School.

The major purpose of the council is to study the needs of business and industry, review the vocational programs and facilities at the high school, develop an open communication between industry and the schools and make recommendations to the Board of Education regarding vocational programs.

For additional information regarding the Belleville High School Vocational Advisory Council activities or membership, contact Victor DePauw at 450-3464.

Township businesses send your press releases to "Business Desk"

c/o The Belleville Times
155 Washington Ave.
Belleville, N.J. 07109
Christopher Bifani, Editor

WHAT?: Campaign Kickoff Rally for Gabe Nazziola
WHO?: YOU!... You're invited... Bring a friend.

WHEN?: Thursday, April 9, 7:30 p.m.

WHERE?: Bella Casa Caterers,
2 Acme Street, Belleville

WHY?: To help elect Gabe Nazziola Commissioner.

TURANO BROS.

Restaurant and Pizzeria

482 Washington Ave. Belleville
751-7519 • 751-7676

ANY PIZZA 1/2 PRICE

Pick-only with this coupon. Offer expires 4/30/87

Assemblyman addresses town business leaders

Assemblyman John V. Kelly (R-30th) was the guest speaker last week at a meeting of the Manufacturer's Association of the Bloomfield/Belleville area at the Glen Ridge Country club at noon.

Kelly, President of Nutley Savings & Loan Association, is in his second term in the General

Assembly, where he serves as chairman of the Housing Committee and as member of the Insurance Committee.

He spoke to the Manufacturers on legislation affecting business.

The 30th District includes Belleville, Bloomfield, Cedar Grove, Glen Ridge, Montclair, Nutley and Verona.

The Manufacturers Association was founded 67 years ago.

Membership is open to manufacturing companies and businesses servicing manufacturers. Ed Sauka of PSE&G is membership chairman. He can be reached at 365-5464.



Dazzled — Cadet Dwight A. Hurlburt, son of Mr. and Mrs. William Hurlburt, Branch Brook Gardens, Belleville, obviously received some special attention from Miss America 1987, Miss Kellye Cash, when she recently visited Valley Forge Military Academy and Junior College in Wayne, Pennsylvania. Cadet Hurlburt, who is a First Lieutenant at Valley Forge, is a senior at the Academy.

It stands for Drop Everything And Read!

School 4 has D.E.A.R. children

Should one happen to venture into the halls of School 4 between 8:45 and 8:55 each morning, he/she will be greeted by a strange

silence. No need to be alarmed though, that is just the sound of reading. For 10 minutes every morning everyone Drops

Everything. Hall monitors stop in their tracks. Custodians pick up their books.

The secretary moves from her typewriter and reads. Even the kindergartners read their wordless picture books or anything else of interest. At 8:55 an occasional egg timer is heard ringing from a classroom, signalling the children to stop reading. Normal activity begins again.

The D.E.A.R. program has been part of the school routine for many years in buildings throughout the country. The program concretely demonstrates to the children that when their teachers say that reading for pleasure is important, they mean it.

In addition, D.E.A.R. helps develop reading stamina by having the children read silently for a period of time. It also gives the children much needed silent practice since the only way to become a reader is to read.

Research has even pointed out that children who read do better in school, and on tests including the Scholastic Aptitude Tests required by most colleges.

If you happen to come to School 4 during our D.E.A.R. time, just bring a book or accept one of ours and Drop Everything and Read!

Troise Insurance Agency Summertime Specials

**MOTORCYCLE INSURANCE
AVAILABLE NOW!**

Harley - Ninja - Turbos

Life - Auto - Small Contractors - Home
Call or stop by for a free quote today!

172 Washington Ave. Belleville • 759-4100



Mary Ann Renn
Weight Management Counselor
RENN ENTERPRISES
521 Franklin Ave.
Nutley, N.J.

SLIM UP & LIVE will work for you!

"I am a slim, trim person - I was always there inside - now I'm out for everyone to see."

Lily Kartischko

"I received greater health, permanent slimmness and increased self esteem. This is the last diet I'll ever have to go on."

Roger Wesby

"Slim Up & Live is a fool-proof way to find yourself and allows you to accomplish your goals. My blood pressure is down and I'm down 37 lbs."

Zoe Toye

CARE ABOUT YOURSELF
CALL 667-1010
WE CARE ABOUT YOU

IRA

THE BIG 1

HAS RATES AS HIGH AS

3 YRS ... 7 1/4%

5 YRS ... 7 1/2%

FIRST DeWITT

SAVINGS

WE'RE FIRST IN FUNDS FOR YOUR FUTURE

575-5800

CORPORATE HEADQUARTERS, WEST CALDWELL

BELLEVILLE • BLOOMFIELD • CEDAR GROVE • HOPATCONG

BRICKTOWN • PARSIPPANY



Free From Stride Rite

Get an Egg Coloring Kit with six egg stencils and four colorful marking pens free with every pair of Stride Rite sandals or dress shoes. Only Stride Rite has the latest fun and fancy new looks for boys and girls in sizzling hot spring colors and styles that make dressing up lots more fun. Free egg coloring kits are available March 21 through April 20 while supplies last.

Plaza Bootery

"Where Fit Is Always Guaranteed"

483 Franklin Ave. Nutley, N.J. 667-8964
SHOE REPAIR DONE ON PREMISES

Stride Rite

The Best Fit With The Most Fun.

Pharmacy Footnotes

Vincent Cozzarelli
Reg. Ph.

DRUG INTERACTIONS

One important factor when considering the effects of a drug is its interaction with other drugs and/or chemicals in foods, beverages and the environment. The interactions can enhance side effects, diminish the drug's effectiveness, and cause other responses that interfere with the desired effect. Two drugs administered at the same time may interfere with the absorption of one another. Similarly, a drug can act as an inducer or enhance the activity of liver drug-metabolizing enzymes. They then even more rapidly degrade the drug. Some drugs enhance or retard the elimination of another drug, often by altering its distribution. For any and all of the above reasons, it is important to inform your doctor about any drugs you are taking.

Your pharmacist can provide you with information on drug interactions. All your prescription needs can be handled at ROS/SMORE PHARMACY, 338 Washington Ave., 759-1956, 759-1968. Walkers, wheel chairs, crutches, canes and other convalescent aids can be rented or sold. We have a gift department, Russell Stover candies, baby needs, cosmetics and toiletries. Open: Daily 9am-10pm, Sun. days 9am-9pm.

HANDY HINT:

Tolerance means that repeated administration of the same dose leads to a lessened effect.

The Community Mental Health Service story

The name and location have changed since 1958 but the service commitment remains the same

Community Mental Health Services for Belleville, Bloomfield and Nutley traces its beginnings to 1958 when the North Essex Child Guidance Clinic was founded at Clara Maass Hospital. In 1964 the clinic was moved to its present location on the grounds of the Essex County Geriatric Center in Belleville. By 1974 the clinic had become a full service agency and changed its name to Community Mental Health Services for Belleville, Bloomfield and Nutley. Alice Ricci, A.C.S.W., is the executive director.

Broad range of programs

Community Mental Health Services provides a broad range of mental health services through its various programs. The Therapeutic School and Preschool is designed to meet the individual needs of children ages 3 to 10, who have developmental delays and/or emotional problems. Through a variety of educational, psychological and social services, children in the school are helped to develop to their full potential. Referrals are accepted from public schools, hospitals, community professionals and individuals. Elizabeth Calahan, Ed.D., is the director.

Outpatient and Family Life Services are directed by Judy Yurmark, A.C.S.W. Individual, group, family and play therapies are provided. In addition psychiatric consultation, medication monitoring and psychological testing are available as needed. Helping parents to improve coping skills is an integral part of our work with families. Goals are to strengthen family bonds, prevent family breakdown and prevent family violence.

Partial Care Program

Individuals with chronic psychiatric problems learn to function in the community through the Partial Care Program. Prevocational, social and recreational activities along with counseling, advocacy and a full range of psychiatric services are provided. Case managers work with clients to develop a specific program of activities based on individual needs. Tony Lucibello, B.A., directs this program.

Friendly visitors

Volunteers in the Friendly Visitors Program provide companionship, understanding and support to homebound senior citizens through home visitation and daily

telephone reassurance. The staff, directed by Jean Libbey, supervises a corps of over 100 volunteers and also provides information and referral services to meet the needs of senior living in the community. Services are free and anyone over 60 is eligible.

Community Mental Health Services, a non-profit agency supported by public funding, private philanthropy and sliding scale fees for some services, is located at 570 Belleville Ave., Belleville. It is a

ming designed to develop clients vocational, interpersonal and leisure skills. Anyone who lives in the towns of Glen Ridge, Livingston, North Caldwell, West Caldwell, Caldwell, Essex Fells, Roseland, Verona, Montclair, Cedar Grove, Fairfield, Belleville, Nutley and Bloomfield can be served through the Partial Care Program.

Volunteerism assists elderly

The most popular form of volunteerism is assisting the elderly,

which reduce the older persons feelings of loneliness and isolation.

Staff members recognized

Norman Mosley, M.A., outpatient therapist at the Community Mental Health Services has been recognized by the Eastern Psychological Assn. to present a paper he co-authored with Dr. Margaret S. Gibbs and Marina Friedlin at the Association's Spring Meeting, April 9, in Washington, D.C.

The paper is a report on research conducted by the authors at Fairleigh Dickinson University in Teaneck investigating the varying perceptions of men and women toward their romantic partners and best friends. In addition to his duties at Community Mental Health Services, Mosley currently teaches at Fairleigh Dickinson University while completing his doctorate in Clinical Psychology from the school.

450-3100 for more information.



Professional Recognition — Community Mental Health Staff Outpatient Therapist Norman Mosley, M.A., has been chosen by the Eastern Psychological Association to present a paper he co-authored with Dr. Margaret S. Gibbs and Marina Friedlin at the Association's Meeting April 9, in Washington, D.C.

United Way member agency. A Speakers Bureau is available to community groups on request. Further information regarding programs and services may be obtained by calling 450-3100.

Family members learn together

A meeting to help families and friends of the chronically mentally ill addressing the "Role of the Family in the Helping System" was held on Tuesday, March 24 at the Community Mental Health Services.

"Educating family members of mentally ill individuals about the nature of mental illness is an important step in ensuring that the client will receive the most effective treatment possible. These families need to know how to appropriately manage the condition of this illness at home; they also need to have a place where they can express and share their own deepest feelings on their situation with others," said Anthony Lucibello, director of the Partial Care Program.

The Partial Care Program provides five-day-a-week program-

ing designed to develop clients vocational, interpersonal and leisure skills. Anyone who lives in the towns of Glen Ridge, Livingston, North Caldwell, West Caldwell, Caldwell, Essex Fells, Roseland, Verona, Montclair, Cedar Grove, Fairfield, Belleville, Nutley and Bloomfield can be served through the Partial Care Program.

Oh Boy! Maestoso's made me a "HAPPY BIRTHDAY PIZZA" It's the best!



Maestoso's

"Home of the Happy Birthday Pizza"

527 Joralemon St., Belleville

759-6106 759-6628

We Deliver Hours: 11:30 a.m. - 11 p.m. Closed Mondays

Edgar Anthony
STUDIO

Edgar Anthony Studio is proud to introduce its staff of professional stylists:

Featuring...

Denise, of the Montclair area, and her well-known coloring methods of European hair tints and highlighting...

Danielle, formerly based in Nutley, trained by Edgar and assisting in haircutting and permanent wave techniques...

Jean, of Clifton, specializing in tips, wraps, and a full-range of up-to-the-minute nail care.

Also available at **Edgar Anthony**... a full-range of Aveda, Paul Mitchell, and soon to have the much talked-about Sorbie line of professional hair care products.

Stop in and see what we're doing at **Edgar Anthony Studio**. We're in the historic Arcade Building at 855 Bloomfield Ave. in Glen Ridge.

Book early... appointments are necessary **680-9324**.

COMPLETE HAIR AND NAIL CARE FOR WOMEN AND MEN



Photo by James Dombrowski

Belleville lends a cheer

By James Dombrowski

She is no ordinary ra, ra girl. She is poised, intelligent, classy, business-like, a true professional. If you met her on the street, cheerleading is the last thing you would guess, yet her energy and liveliness is what makes her cheering special.

Maureen Polega of Branch Brook Drive in Belleville is a New Jersey Nets professional cheerleader. A 1980 Belleville High School graduate, Maureen's only prior cheering experience came in Jr. High School. She was also the Freshman High School Wrestling manager.

Upon graduating BHS, Maureen was scheduled to attend Art and Drama School in New York City, but when her dad took ill her family needed her support. Being a selfless, caring person, she decided to go to work to lend a helping hand.

Maureen, a legal secretary, has worked in the banking field as a international recruiter for Citi-Bank and is now employed by Executive Search of Manhattan as a head hunter for several major corporations. Her hours are long, tiring and time consuming.

So what does Maureen do to relax? She loves to dance. "I have always wanted to be a dancer," she explains. "I feel I have an artistic side that doesn't always come over at first, but when you get to know me you can see I love the ballet and the performing arts."

Maureen, who is 25 years old, has taken dance lessons for 20 years, beginning with Johnny Nacarra in Harrison, and presently you can find her practicing at the Lyndhurst Studio Workshop.

Maureen takes tap, ballet, aerobics and jazz at the Lyndhurst Workshop. She has also studied music and took singing lessons from Mrs. Rossi of Belleville.

When asked why she enjoys being a Nets cheerleader, Maureen said, "Dancing and cheering is fun. When I come home from the office I am tired and tense, but going to the Arena at night is relaxing. It's an outlet to let it all out."

Trek to Rutgers, New Brunswick

BHS math students attend career day

Nine Belleville High School mathematics students participated in the Engineering Career Day on March 19 at Rutgers University in New Brunswick.

Dawson Bloom, Robert Cueva, Eric Faragi, Mario Lemongello, Gus Lijo, Quynh Mai, Leonardo Puentes, Robert Scheible and Tricia Serio attended presentations by the following engineering companies:

E.R. Squibb and Sons, Lockheed Electronics, Steinman and

Boynnton, and Public Service Electric and Gas Co.

Later they met with admission representatives from the following engineering colleges:

New Jersey Institute of Technology, Rutgers University, Stevens Institute of Technology, Manhattan College and Widener University.

This educational field trip was jointly sponsored by the Mathematics and Guidance departments of Belleville High School.

Candidate Cantarella plans kick-off rally

The Friends of Doug Cantarella, candidate for the Belleville Board of Commissioners, have announced a gala campaign kick-off at the Knights of Columbus Hall, Bridge Street, on Friday evening,

April 10 at 7:30 p.m.

The public is invited and admission is free. Refreshments will be served. For information call Joe DelGuercio, campaign manager at 751-5164.

LOCKWELL LOCKSMITH
Bloomfield, NJ

We install and repair the best dead-bolts on the market... MEDECO - SCHLAGE - ARROW - KWICKSET - SEGAL - YALE - LORI - DEXTER, etc.

"Other Services"
Master Key Systems. Combinations Changed. Knob Locks. Door Closers. Window Bars - Foreign and Domestic Car Locks - Car Lockouts. House Lockouts. Electric Strikes. Window Locks. Panic Bars, Etc.

EMERGENCY SERVICE
Free Estimate
743-0197

We're Fighting For Your Life.

American Heart Association

GEM Carpets, Inc.
237 Centre Street
Nutley, N.J. 661-0156

For the special customer who appreciates the finest in...

- CARPET
- LINOLEUM
- SOLID VINYL TILE
- HARDWOOD FLOOR
- CERAMIC TILE
- WALLCOVERING
- WINDOW TREATMENTS

Showroom Hours:
Daily - 8:00 AM to 6:00 PM
Monday & Friday 8:00 AM to 9:00 PM
Saturday 8:00 AM to 5:00 PM

ELECT PATRICIA PISANO

Richard Jr., Jon, Paul and Patricia Pisano

"Any decision that I will make will not only affect YOU... but MY FAMILY as well"

VOTE 3A — April 7, 1987
Belleville Board of Education

Paid for by Friends of Pisano '87

Belleville Times

Serving Belleville Since 1909 (USPS 049-220)

Publisher: Frank A. Orechio

Published Every Thursday
At 155A Washington Ave.
Belleville, N.J. 07109

Second-Class Postage Paid
At Newark, N.J.
Postmaster: Send address
changes to The Belleville Times,
155A Washington Ave., Belleville, N.J. 07109

Editor: Christopher Bifani
Social Editor: Helen Maguire
Sports Editor: Michael Lamberti
Advertising Mgr: Lillyana Montanez

All departments call:

759-3200

Annual Subscription \$14.00
Senior Citizens \$7.00

Marotti and Pizzi

Mayor Michael Marotti has been a member of the Township Commission since 1971. Commissioner Michael Pizzi, Director of the Department of Public Affairs, is completing his first four-year term.

Both Mayor Marotti and Commissioner Pizzi, along with Commissioner Joseph McGreevey are seeking re-election to the Township Commission.

Marotti and Pizzi have served well the public interest. Their singular objective has been to

deliver maximum services at the lowest cost. Each in his own way has effectively administered his department. To our knowledge, neither department has been the subject of criticism by any citizens.

The Township has prospered with Marotti and Pizzi; and on that basis, these dedicated public servants deserve — and have earned — another term. Without reservation, we endorse the re-election efforts of both Mayor Marotti and Commissioner Michael Pizzi.

Belleville's loss

Two unusual public officials enjoying high popularity with the voting public decided to call it quits.

It was with sadness that we greeted the decision by Commissioners Ralph DiRuggiero and Joe Grande not to seek re-election.

As members of the Township Commission, both DiRuggiero and Grande gave their everything to keep faith with the people that elected them. As Public Safety Director, Commissioner Ralph DiRuggiero earned the respect of the troops he led — and those men and women are sad over his retirement. Commissioner Joe Grande took a department that for many years acted as a reservoir for political appointees — and under his command, politics was never a consideration in making his personnel decisions — or for that matter when casting a vote as a

member of the Township Commission.

Citizens interested in maintaining the quality of life in Belleville — and improving upon it — must address the real reasons why these two outstanding public officials decided to return to private life.

Are they replaceable? In private or public life, there is no such thing as an indispensable person — but these two men are the nearest to the indispensable person. Utterly honest, dedicated to a fault, compassionate beyond the call of duty, these men will be missed — by members of the department they led, as well as the public that paid their salaries and benefitted from their services.

In bidding good-bye to Ralph DiRuggiero and Joe Grande as members of the Township Commission, we hope the future may bring them back to public service.

Often during the course of a week, experiences occur and thoughts arise which fall short of the standard of value that would elevate the subject matter to editorial consideration — and to address that vacuum, this space is born.

To comply with legal requirements, Nutley, Belleville and Bloomfield voters next month will be asked to vote on budgets submitted by the respective Board of Education. In this day of

ware, Maryland, Massachusetts — a situation that gives Tom Kean a headstart over any other person looked upon as a Presidential or Vice Presidential candidate. The problem confronting a Kean candidacy is the fact that the New Jersey Senate is controlled by Democrats and a vacancy in the Governorship is filled by the Senate President — who in this case



FLIGHT 890

By Frank A. Orechio



awesome financial personal responsibilities, more than likely, the school board budgets may go down to defeat and the results will have nothing to do with the merits of the budgets. It's just a simple case of taxpayers tired of being confronted with higher and higher tax bills. Despite the fact that the school board budgets are frugal documents and the additional fact that school board members also are taxpayers — voters' attitudes as read by professionals in the business may result in negative votes on the budgets. If the bad news happens, it will not be good for the school system — nor for the taxpayers themselves. When people are thinking about buying a home in a community, more than likely, the first thing they look at is the school system and the quality of education available. If taxpayers habitually reject school budgets, it's a good bet parents who value the importance of a good education may decide not to settle in their town and skip it for another town where voters act more responsibly.

Governor Tom Kean could be the Republican Vice Presidential candidate in 1988 for the asking. Why shouldn't he be considered for the GOP Presidential nomination? Who among the persons mentioned for the GOP Presidential nomination is better equipped than Tom Kean? The northeastern part of the United States must be carried by the Republican party in 1988 if a Republican is to succeed President Ronald Reagan. Tom Kean's name is well known to the voters of New York, New Jersey, Dela-

ware, Maryland, Massachusetts — a situation that gives Tom Kean a headstart over any other person looked upon as a Presidential or Vice Presidential candidate. The problem confronting a Kean candidacy is the fact that the New Jersey Senate is controlled by Democrats and a vacancy in the Governorship is filled by the Senate President — who in this case

happens to be a Democrat. Tom Kean's loyalty to the Republican party would never allow him to turn over the Governorship of the State of New Jersey to a Democrat. Tom Kean has too much integrity to flirt with such an idea. And — the most prominent Republicans in the state accept the fact that the 1987 election will see the continuation of Senate Democrat control. Such an event may very well lead to a return of Assembly control to the Democrats. The Republican hold on the lower House is rather tenuous — and if the Republican leadership targets enough Senate Democrat seats, it runs the risk of ousting Republican Assemblymen and losing control of that house.

Water. Water. Water is a product that makes the difference between life and death. The last water rate increase that Nutley imposed upon its users amounted to 50 percent — and that increase was due solely to the charge from the water purveyor supplying Nutley with water — the Passaic Valley Water Commission. Nutley's participation in the Wanaque South Water Project had nothing to do with increasing the rate for water to Nutley consumers by 50 percent. There is a good likelihood that now with Nutley as a partner in the Wanaque South Project, there may be no increase in water charged to Nutley users. As a matter of fact, if the Nutley contract had been limited to the water that Nutley actually uses, there would be a guaranteed no increase in the water charge. Unfortunately, five years ago, Nutley con-

(continued on page 16)

Praise from the pulpit...

To the editor:

Here again, you have extended the services of your paper to the clergies and the churches of Belleville. We are happy the ministerium has been able to receive your full cooperation and support in a very and dire need — to reach the community with good and refreshing messages.

We, the congregation and I, the pastor of this beautiful church, thank you and all your staff for giving us the opportunity.

May God bless you and the media!

In his service,
Rev. Jung Yong Na
Wesley United Methodist Church
Belleville



Letters to the Editor

155 Washington Ave., Belleville, N.J. 07109

Times slanted CCB issue...

To the editor:

Mr. Bifani, this letter reflects the collective thinking of the Board of Education and the Office of the Superintendent of Schools. We don't expect favorable press if it isn't earned. By the same token we react to slanted reporting.

The article appearing in the Thursday, March 19, 1987 issue of the Belleville Times "CCB barred from Expo 87" is nothing more than an attempt to sensationalize an issue that isn't an issue.

You sat with the Expo committee on March 10, 1987 and you as I, heard that the tables had been ordered by Mr. Miele and that Mr. Pico, Mr. Piccone, Mr. DiMaggio and Mr. Scelba had developed the final floor schematic. For all intents and purposes everything was brought to closure. The meeting scheduled for March 24, 1987 is just a get together to see that no loose ends exist.

You were also told by Mr. Linfante and me that we couldn't see why the concerned citizens should have a table at an educational exhibit. This isn't any way to be construed as passing judgement on the work and intent of the group.

We ask that you, as your immediate predecessors did, work in close harmony with the community. Your newspaper can be a viable force. We stand ready to cooperate. We ask that you bring the same philosophical commitment to your position.

Michael D. Nardiello
Superintendent of Schools

On barring the CCB...

To the editor:

Having been a resident of Belleville almost all my life, I would like to say one thing — the people of Belleville should have boycotted "Expo '87" if the CCB group was barred. The Concerned Citizens of Belleville have just as much, if not more, right to be a part of the exposition as any other group, including education.

Where would the children of the future be if Belleville did not have people like the CCBs dedicated to the town's health. Yes, health is the word I want to use. Even a town can become diseased and deteriorate.

March 19 issue of Belleville Times states: "Both Superintendent Nardiello and Board of Education President Phil Linfante said that the Concerned Citizens of Belleville is not a group directly concerned with children or the Belleville School system." That's hypocrisy.

Just think a little! CCB has set an example for the kids in our town to know that they can get involved, they can speak up if they think they can contribute to the neighborhood's well-being. CCB released a report on the asbestos in the schools. CCB supports the school system by PTA and taxes, etc. CCB is trying to make Belleville a place to be proud to live in. CCB is trying to keep the taxes of the future to a minimum; bad enough the kids won't be able to buy homes but to be overly burdened with town taxes.

Let's be honest with our reasoning — are the kids going to stand still or are they going to grow? If they are going to stand still, fine, then they do not need the CCBs. But, if they are going to grow, and I'm sure they will, then they need the CCBs more now than ever.

What are Mr. Nardiello and Mr. Linfante afraid of... the kids might learn a little more?

Frances Schiavo
North Sixth Street

Pisano's appeal...

I wish I could have met all the residents in Belleville but that seems to be impossible because I have been walking the districts and the election is upon us. So I would like to take this time to apologize to the residents that I have not met. You, the people, are what an election is about. I wanted to let all the people get to meet me and from the people that I have talked to, I have learned what is expected from our school system. Once elected I can project these feelings into some of the decisions I make. As a mother of three sons their education and the children of Belleville's education is my prime concern. Being a homeowner and taxpayer makes me want to use our tax dollars wisely and efficiently for education.

I hope you have heard about me and will consider me on election day. With your support I know we will begin a new beginning for our children in Belleville. Any decision I make will not only affect your family but my family as well. Again let me say that I hope that you will consider me to be a member of our Board of Education on April 7, 1987 — Vote 3-A. Thank you.

Patricia Pisano
Candidate for Belleville
Board of Education

Get the priorities straight...

To the editor:

I admit that I do not know everything about the (proposed) Belleville budget. However, I am against firing any policemen and/or teachers. I realize that Belleville — like most local communities — has a problem balancing its budget, but the township should get its priorities straight.

Educating our children and protecting our citizens should have top priority. If the budget cuts must be made, they should not be at the expense of our children and/or law-abiding citizens' safety.

Mona Santiago
Corlanti St.

P.S. I personally would not want to vote for any candidate that wants to lay off any policemen or teachers or make any cuts in educational spending.

(continued on page 6)

Golden Comments

By James R. Golden

As we come down to the wire of an April 7 School Board election which bears significant importance to every taxpayer and youngster in our school system, we feel compelled to offer objective observations gleaned from news reporters and commentary of concerned citizens and candidates seeking public office.

The prospect of another tax increase of more than 20 points, stemming from the state's funding reductions, produces a horrendous effect which will provoke voters to reject the school budget, especially in view of the reduction in school programs and layoffs of personnel.

The denial of the Concerned Citizens of Belleville (CCB), by the Belleville Board of Education, to participate in the Expo '87 March 28 program having so infuriated its president Vincent Frantantoni to draft a recently published "stinging" letter to the editor, which appeared in this newspaper, that rebuked the many "good" things alluded to by an incumbent trustee seeking reelection, in a sardonic fashion, seemingly suggests that the CCB may "target" trouble for said incumbent.

In which event, with only three candidates aspiring for one of two offices, it becomes obvious that the already strong candidacy of Patricia Pisano, mother of three young children attending the school system; a personable, intelligent woman with many talents and popular is looming as a surprise winner already endorsed and supported by such popular political luminaries as Sheriff Tom D'Alessio, Commissioner Mike Pizzi, Belleville Democratic Party Chairman Chet Prosperi and Republican Party Town Chairman Angelo Risoli and, of course, "Boss" Rega... she is looking good.

As Belleville gravitates into a vortex of political activity stemming from animated elections for both the local school board and the municipal governing body it generates many controversial issues and, at times personalities foolishly injected engender animosities needlessly. It is to be hoped that such untoward incidents will be averted and that campaigning will be conducted upon a high level of dignity and decorum.

Policies and issues, not popularity nor "mudslinging canards" should set the pace and pattern of a dignified campaign devoid of roorbacks and lies. The pages of the local press should be pressed into full service to bring a clear objective picture of the candidates and their platforms.

Belleville, as it braces to enter a new century, must fortify itself with men and women of intelligence and vision with experienced managerial talent and the ability to adjust in the mutable changes that are certain to occur in the foreseeable future... individuals with the capacity to lead and command respect for their integrity, honesty and decency.

Simple honesty and common decency was the shibboleth of the old "Clean Government" Republican Party in Essex County which reigned for many years under that aegis and governed well.

We respect the intelligence and honor of the Belleville voters to evaluate the qualifications of all the candidates and to arrive at a rational and sincere judgment of whom they, in good conscience, feel best qualified and deserving to serve as our elected leaders for the ensuing years of their term.

Having had once tread that arduous path and recognizing the attendant difficulties inherent, we respectfully extend our best wishes to all the candidates... we admire and respect their dedication in offering to serve the public.

Services Directory

Board of Education	450-3509
Mayor's Office, 152 Washington Ave.	450-3322
Municipal Court, 152 Washington Ave.	450-3328
Parks & Public Property, 28 William St.	450-3424
Post Office, 413 Washington Ave.	758-4666
Public Safety, 152 Washington Ave.	450-3344
Public Works Garage, 360 Cortland St.	450-3312
Recreation Office, 407 Jaramon St.	450-3422
Tax Collector, 152 Washington Ave.	450-3391
Violations Bureau	450-3319
Water Department Services	450-3419
Middle School, Washington Ave.	450-3442
High School, 100 Passaic Ave.	450-3544
School 3, 230 Jaramon St.	450-3530
School 4, 30 Magnolia St.	450-3540
School 5, 149 Adelaide St.	450-3450
School 7, 20 Passaic Ave.	450-3470
School 8, 181 Union Ave.	450-3480
School 9, 301 Ralph St.	450-3490
School 10, 537 Belleville Ave.	450-3510
Adult School, 100 Passaic Ave.	450-3460

Delegates' bill granting write-off for removal of radon clears panel

A bill sponsored by Assemblyman John V. Kelly and Assemblywoman Marion Crecco that would grant property owners a deduction on their state income tax for the cost of ridding their homes of radon contamination was released by the Assembly Appropriations Committee on March 9.

Radon is a colorless, odorless gas that comes from disintegrating uranium — a radioactive metal found in some types of granite. Exposure to the gas has been

known to cause lung cancer.

"Radon gas is seeping from the Reading Prong, a geological formation that runs through northern New Jersey," noted Kelly, R-Essex. "It is a potential threat to the nearly 250,000 homes that have been built on the prong."

"Preventative measures can cost up to \$2,000 or more if an elaborate ventilation system is required to remove radon from a building and vent it outdoors," said Crecco, also R-Essex.

"Afflicted homeowners need

help, and a tax deduction would help," Kelly said.

Under the bill, the state Division of Taxation, in consultation with the Department of Environmental Protection, would establish standards for devices and services eligible for the tax deduction.

The measure, A-2940, was released by the committee and sent to the full Assembly for consideration.

Both assembly delegates represent Belleville in Trenton, and are seeking reelection this year.

Adubato declines legislative race to pursue academic and TV career

Former Assemblyman for Belleville, Steve Adubato, 29, has announced that he will not run for the State Legislature in the upcoming 1987 election. Adubato, a Rutgers University instructor and host of the weekly television series "Caucus: New Jersey" says he has "been under pressure from top state Democratic party officials and others to seek a return to Trenton in an effort to regain Democratic control of the General Assembly."

However, in announcing his decision not to run, Adubato stated, "The decision whether to run or not was the toughest I have faced professionally. I was torn between my desire to return to the state legislature and help to govern New Jersey — and my work in academia and television. After many meetings and discussions with political associates, family and friends and looking at the reality of what it would take to campaign and serve in office, I have come to the decision that it will be impossible to run at this point in time. It would be unfair to the Democratic Party and their chances of regaining control of the State House, unfair to Rutgers University and those who have supported my broadcasting career, and most importantly unfair to the constituents in the 30th District. They deserve a representative that can devote the kind of time and effort to solving the difficult problems currently facing the State Legislature. My not running will open the door to others who are more suited to serve at this point."

In addition to his work as an instructor in the Rutgers Graduate Department of Public Administration and producing and hosting of "Caucus: New Jersey," Adubato will be completing his PhD in the area of Mass and Organizational

Communications and will be contributing columnist for New Jersey Reporter Magazine.

State Democratic Chairman Ray Durkin met with Adubato last week regarding a potential candidacy stated, "I respect Steve's decision. I know it wasn't easy for him because when he was in the Legislature, he was committed to his work there. However, a lot has happened for him since leaving office. I am happy for him professionally and I wish him the best and know he'll remain active in civic and public affairs."

Another prominent official Adubato consulted in making his decision was 30th District Senator Carmen Orechio. Adubato and Orechio successfully ran in 1983. "I was looking forward to us campaigning together but after discussing the situation with Steve it is clear to me that he is making the best decision. However, at 29 years old he still has the time to return to politics if he so chooses," Senator Orechio said.

Adubato stated one of the ironic events surrounding his decision involved Maria Cuomo, daughter of Governor Mario Cuomo. Adubato, along with Ms. Cuomo, co-hosted "Video Magazine," a nationally syndicated television magazine show last summer. "I spoke with Maria the day after her father decided not to run for President. We spoke about the time, effort and commitment of electoral political life. We talked about our respective work in television and my work at Rutgers. We agreed that when you spread yourself too thin your work inevitably suffers. There are only so many hours in a day."

In concluding, Adubato stated, "Life works in funny ways. I remember saying on election night in 1985 we would begin campaign-

ing for 1987 as soon as possible. But when you are out of politics for a while, you begin to see that there are many other meaningful, challenging and rewarding professional paths. You begin to find out that you don't have to be in a formal elected post to serve people and make a difference. My work in academia, public affairs, television and my writing has given me that opportunity. I feel very fortunate."

Adubato was unsuccessful in his reelection bid in the 1985 Assembly contest.

Ritacco Bros. Pizzeria

\$1.00 off
Any Pizza
(pick-up only) (w/coupon)

18 Washington Ave.
Nutley
667-9600

"PEOPLE NOT POLITICS"



On Thursday, April 2, 1987, 7:30 p.m.

the public is cordially invited
to The Chandelier Restaurant
340 Franklin Avenue, Belleville
to join

JIM MESSINA
when he kicks off his campaign
for Commissioner

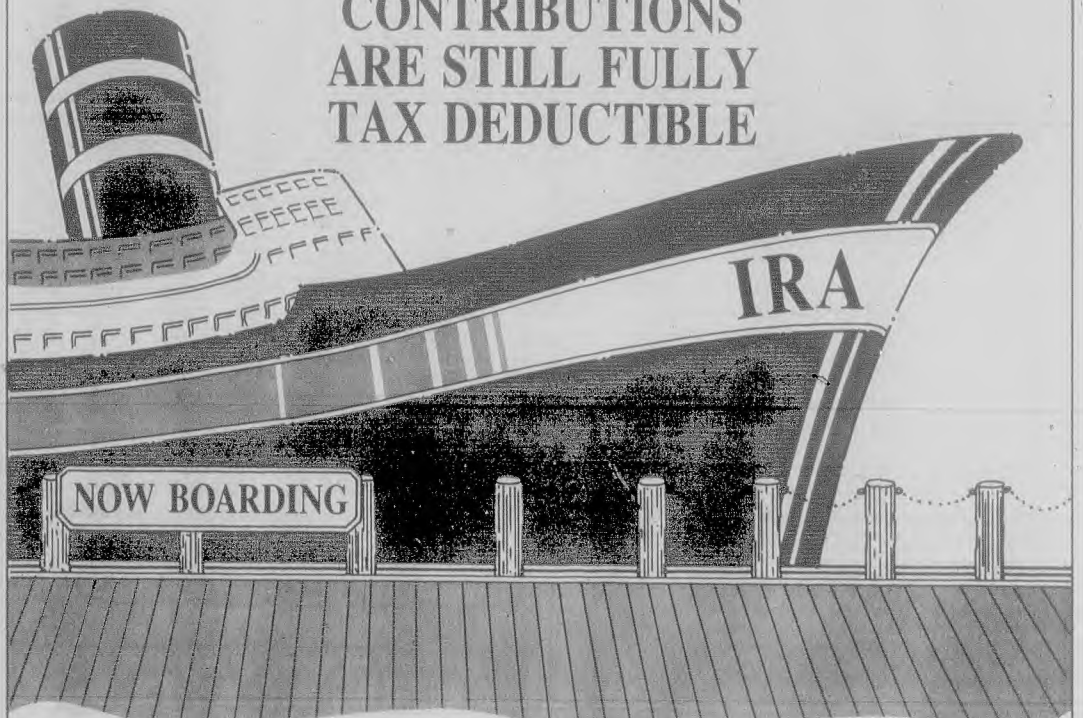
— Refreshments Will Be Served —

**"Unite Our Community and
It's Commissioners"**

Paid For By Committee To Elect Jim Messina - Commissioner

DON'T MISS THE BOAT

1986 IRA
CONTRIBUTIONS
ARE STILL FULLY
TAX DEDUCTIBLE



It's time to open an Individual Retirement Account, or add to your existing one.

The new tax law will limit eligibility for IRA benefits for tax year 1987 and beyond.

But for now you may still receive the maximum benefits on your investment. That means you can contribute up to \$2,000 to your IRA and deduct the full amount from your 1986 tax return. Married couples filing jointly may deduct contributions of up to \$2,250 and working couples may still take a full deduction of \$4,000.

Nutley Savings has a variety of IRA plans which pay the highest market interest rates and are designed to meet your individual needs.

Remember, this may be the last year you have to receive the maximum benefits on your investment. Stop in and see one of our IRA experts. They'll show you how to make the most of your Individual Retirement Account.

SO, DON'T MISS THE BOAT. GET ON BOARD NOW AND TAKE ADVANTAGE OF THIS YEAR'S OPPORTUNITY.

Nutley Savings
AND LOAN ASSOCIATION

Main Office: 371 Franklin Avenue • Nutley, N.J. 07110 • 661-4200
Branch Office: 221 Washington Street • Newark, N.J. 07102 • 623-7090

Federal regulations permit withdrawals as early as age 50½. Premature withdrawals may result in a penalty and loss of tax-deferred status.

Belleville Redevelopment Agency 1987 Meeting Schedule Third Wednesday each month

April 15	July 15	October 14
May 20	August 19	November 18
June 17	September 16	December 16

The place of meeting is at 383 Washington Avenue, Belleville, at 8 p.m.



**Experience
your fantasies
in dining**

The finest in
Northern Italian Cuisine

La Fantasia
RISTORANTE

493 Bloomfield Ave. Bloomfield 429-1906

Chef de cuisine: Jimmie Tarantino

Happy Hour
4 PM - 6 PM
Complimentary
Butter!

Businessman's Luncheon
Monday - Friday

Catering for all occasions

Sundays available for private parties

At the Piano — Friday & Saturday

"JAYE"

Luncheon
and Dinner
Specials
Daily

All major credit cards honored

Ample free parking



Maestoso's Pizzeria is back! — On hand for the ribbon cutting were: (l. r.) Tony and Phyllis Pizzilli, owner Philip Maestoso, Mayor Michael Marotti, owner Peter Vicari, Maria Vicari, Lucy Maestoso, John Vicari, Rosa Albinelli, Julio Maestoso. Located at 527 Joramemon Street, "Home of the Happy Birthday Pizza." (Photo by Jaye Tarantino)

This Sunday at Silver Lake Baptist Church Belleville parish presents film on Nazi war prisoners

The true-life story of Corrie ten Boom, a former Nazi prisoner, will be presented through the motion picture, "The Hiding Place" on April 5 at 7 p.m. at the Silver Lake Baptist Church.

This remarkable story of tragedy and victory shares the experiences of a family who was willing to risk all for others. The ten Booms became involved in the Dutch Underground during the German occupation of World War

II by hiding Jews in a secret room built in their house, thereby aiding them in their escape from the Nazis. As a result of a raid by soldiers, Corrie's family was taken prisoner and Corrie was sent to the dreaded concentration camp Ravensbruck.

"The Hiding Place" portrays the de-humanizing agonies of a concentration camp, the personal confusion and conflicts of both victors and vanquished, the

confrontation of military might and gently ministry, and the costs of caring for others.

Millions of readers have cried, suffered and triumphed with Corrie ten Boom and her family through the book "The Hiding Place." Now a motion picture captures all the power, excitement and sheer dramatic force that sets this story apart from others. See "The Hiding Place," a World Wide Picture production, and share in a miracle of love.

Belleville Brian McGuinness promoted to Asst. Treasurer

Provident names four bank officers

Four bankers who started their careers with the Provident Savings Bank were promoted to officers, according to an announcement from Kenneth F.X. Albers, Bank Chairman and Chief Executive Officer.

Brian D. McGuinness of Belleville joined the bank staff in 1980 as a

part-time teller. His extensive training includes posts in the teller, management and loan departments. In 1985 McGuinness was named a loan officer and subsequently appointed Assistant Treasurer. He is a graduate of St. Peter's Prep and holds a bachelor of science degree from St. Peter's Col-

lege. Michael D'Antuono of Bloomfield, commenced his career at Provident as a member of the Management Potential Group. His service with the bank included positions as a teller and auditor prior to advancement of the Office of Assistant Treasurer. D'Antuono holds a bachelor of science degree from Seton Hall University.

Lillian Sutaris of South Bound Brook joined Provident in 1976 as a part-time employee. Upon graduation from high school, she became a full-time secretary and later served as an Administrative Assistant. In 1982 Sutaris was named to the office of Assistant Treasurer and served in this capacity until her present promotion to Assistant Vice President.

Joan Crane of Old Bridge joined Provident's East Windsor Office in 1984 as a staff member. Prior to promotion as Assistant Secretary, she served the bank as an Administrative Assistant and Branch Manager. Crane, a native of Ireland, is a member of the Old Bridge Fine Art Society and the Garden State Arts Center Irish Festival.

"The tax deadline is looming. H&R Block is never too busy to help you."

Henry Block

H&R Block's tax preparers are working every day and evening through April 15th. We're pledged to find you the biggest refund you're entitled to. This year get back everything you've got coming.

H&R BLOCK
THE INCOME TAX PEOPLE

Belleville - 125 Washington Ave. - 751-3836
Nutley - 155 Franklin Ave - 235-1000
Bloomfield - 18 Broad St. - 743-0898

All offices will be open 8 a.m. to 10 p.m. weekdays and 9 a.m. to 9 p.m. Sat. & Sun.

MasterCard & Visa Accepted

APPOINTMENTS & HOUSE CALLS AVAILABLE
Speakers For Your Club or Civic Group Avail.
Free of Charge • Call Any Office For Information
ONLY 13 DAYS LEFT!

YOUR NEW IMAGE

Looking good is directly related to feeling good, being self-assured and confident.

at Michelangelo
we understand

More importantly, we know what to do about it. We'll show you how good you can look and feel with a free demonstration before you make your decision, with absolutely no obligation.

Michelangelo
enterprises, inc.

997-1200

CALL, WRITE OR STOP IN FOR FREE BROCHURE
Watch Our Commercial on
OBC-TV Channel 36 Wed., Thurs. & Fri. 6-10 p.m.

7 Ridge Rd. (Rt. 175 at Rt. 7) 1244 McBride Ave. (at Rt. 46)
No. Arlington, N.J. 07032 West Paterson, N.J. 07424

Credit Cards Accepted



art galleries royale

500 Stuyvesant Ave.
Lyndhurst, N.J.
438-3075

OIL PAINTINGS

Large Selection On Display
Largest Gallery in New Jersey

Lithographs 9 Prints
Photos Painted on Canvas
Stock & Custom Frames
Complete Framing Department

ORTHODONTICS



AFFORDABLE BRACES
FOR CHILDREN & ADULTS

CONVENIENT HOURS
(EVENINGS TOO!)

DENTAL
INSURANCE
WELCOME

SECOND OPINIONS PROVIDED

NEVER A CHARGE FOR CONSULTATIONS
DR. MICHAEL B. FITZPATRICK

DR. BRUCE FOX

484 Washington Ave. Belleville
759-2173

Firemen's mutual concern...

(continued from page 4)

To the editor:

This letter is written on behalf of the Firefighters of Belleville, Local 29. We would like to ask the Mayor and Commissioners of this Township a few questions.

1. How can you justify laying off eight (8) firefighters? You just appointed eight firefighters to try to make the difference in our undermanning situation. Salaries for these men were already in the budget from past firefighters who retired. Therefore it didn't cost the town anything in extra salaries. Now you want to take their positions away.

Gentlemen, are you aware that there will be more firefighters retiring this year? The situation only gets worse.

2. It seems to this group anyway, that the township should be financially stable.

a) Limiting 5 percent caps on previous years budget as our spending limit for new year.

b) Income revenue from numerous new condominiums spread all over town.

c) The fact that Belleville income from real estate taxes are seeming stable. (The more condos that are built, the more serious the undermanning becomes.)

3. As public minded employees and taxpayers of the Township of Belleville, we've been asked to bear with the township in undermanning the engines. Often riding with only two men on an engine (which includes the driver and captain) in the township's high hazard zone of the Washington Avenue area. Which includes our industrial complexes, condos, private homes, shopping mall and the Valley section of town.

4. In regard to the new Fire Engine. What good is a new engine when you don't have the firefighters to man it? We are in desperate need of a new engine. The oldest engine is stationed in the Washington Avenue Fire House (which covers the township's high hazard zone) and is 22 years old. The risk of this Engine breaking down at a working fire is a good possibility, endangering the lives of citizens, firefighters and buildings.

Other engines in service range between 13 and 22 years old. These engines are constantly being repaired due to breakdowns. At the present time, the Fire Department has no personnel assigned as a full time mechanic, who can keep on top of required maintenance and repairs.

Firefighters are only as good as their equipment.

In closing, if the layoffs become a reality, we will be forced to cut back services, due to the fact that firefighters man the ambulances and respond to fires. With a manpower shortage we find it hard to understand how a firefighter committed at a working fire can drop what he is doing and respond to a medical emergency or service call (transporting Belleville residents to and from hospitals and doctors offices). The ambulances are manned by two firefighters each.

Firefighters of the Township of Belleville
F.M.B.A. Local No. 29
Philip Lazaro, Jr.

Your vote counts...

To the editor:

The time has come in our township when the voter must decide the future of Belleville. May 12, 1987 will be the most important decision any voter in the history of our town has to make.

Whom can we trust to manage the everyday business of Belleville? About 10 to 12 candidates will be on the ballot to be elected to operate our township and keep our budget in control and give the taxpayers services.

A good candidate can lose by one or a few votes; it has happened before. The young and old alike must vote — it's your right.

With the school budget going up about 20 points, approximately \$125-per average home, and our township budget going up about 29 points (without state help), we will have to make many sacrifices and look into other areas for a solution.

We should raise many license fees as they haven't been raised in 30 years!

We should charge many stores for garbage pick up because of their size of business.

We should pass an ordinance to control the vending machines on our sidewalks and charge a fee per each machine.

We should merge some departments so we don't have duplication.

We should freeze all spending that is not necessary and hiring new employees.

Salaries for present employees, benefits and emergencies shouldn't be touched.

We should put a night crew in the Water Division so our water system can supply our taxpayers clean water.

We should put daytime policemen on our streets to be seen by our Seniors for safe streets.

With good planning, and the right people, economy can be controlled to serve all the people.

Joseph Fornarotto

Supports party endorsements...

To the editor:

In response to a letter in your paper, from a Board member currently running for a Board of Education seat about Mrs. Patricia Pisano, who has been endorsed by numerous party factors, among others, some of the Democratic leaders:

He's insinuating unethical suggestions. I would like to offer the following remarks to correct his baseless accusations. I would like to point out the party in question is a legitimate entity. Comprised of people of many beliefs and faiths, who are not bound to the dictates of any group, they enjoy the right to vote for whom ever they feel, who are most qualified to serve the interest of our children, of the community and the parents who are paying the taxes.

In a non-partisan election such as this, this practice is very common in this nation. In view of your letter Mr. Candidate, this could be sour grapes on your part.

To Mrs. Patricia Pisano, please don't be discouraged by such a ridiculous incident. As you know I am a businessman in town and come in contact with many people of Belleville. My survey shows you are definitely in this race.

Perhaps, this candidate who wrote this is becoming unraveled. In conclusion I wish the very best in your future endeavors.

Jackie Rega
Belleville Avenue

ADDENDUM

(Editor's Note — This is the ending to a letter from the March 26 edition which was inadvertently cut short. We apologize for the error.)

I urge all taxpayers to come out to vote in the April 7 school election. I urge you all to vote on the budget because it does include an increased tax levy of over \$837,600 (approximately 20 tax points, or a tax increase of about \$125 on an average home). Vote "yes" or "no", based on what your own conscience dictates and not any political hype.

I urge you not to vote for either of the incumbent Board members seeking reelection to demonstrate to them that you are sick and tired of the irresponsible handling of your tax dollars, just like you did to Mr. Shapiro a few short months ago.

Gabriel A. Nazzola
Van Ryper Place

Michael W. Freda, D.M.D.
and

Anthony T. Suriano, D.M.D.

Orthodontics for Adults and Children

- Clear braces
- Invisible braces (lingual, if applicable)
- Saturday and Evening appointments
- Insurance services available

307 Broad St. Bloomfield • 748-2248

Bookmarks...

Calling all artists

Registration is being taken at the Circulation Desk of the Belleville Public Library, 221 Washington Avenue, for the Library's annual Art Show, sponsored by the Friends of the Belleville Public Library and the Junior Woman's Club. The show is open to grades 1 through 12 and adult level, professional and non-professional artist.

Eligible work includes charcoal drawings, line drawings, graphics, mixed media, pastels, oil and acrylics, watercolors, photography sculpture. No crafts, such as decoupage, painting on wood or velvet, string art, weaving, or paint by number will be accepted.

Call 450-3434 to register, or ask for Adrea Cohen if you have any questions.

Junior Women give cartoons

The Junior Woman's Club of Belleville has made a generous gift to the Library, which will pay for six new VHS format videocassettes for family viewing. The cassettes are:

Felix the Cat, Raggedy Ann, Superman, Popeye Meets Sindbad, Herman and Catnip, Caspar the Friendly Cat.

Each video is marked as "A Gift to the Children of Belleville from the Junior Woman's Club."

Library director David Bryant said "The Junior Woman's Club has made many outstanding contributions to our Library of the years. This group's determination and success at fund-raising should make it a model of community minded people doing good things for Belleville."

New education books

The following new education books have been added to the collection of the Belleville Public Library. They are "Creative Reading for Gifted Learners," "How to Beat the SAT," "No Easy Answers: the Learning Disabled Child at Home and at School," "A Student's Guide to College Admissions" and "Your College Application."

These books should be helpful for the student contemplating college, as well as the learning disabled youngster.

Call the Library at 450-3434 to reserve the books, there is a 25 cent charge to reserve.

New videos

The following National Geographic videos have been added to the collection of the Library. They include "Born of Fire," "The Great Whales," "Land of the Tiger," "Rain Forest," "Secrets of the Titanic," and "Sharks."

Meeting Room for rent

The Meeting Room of the Belleville Public Library is available for rental for organizations and seminars. Call David Bryant or Adrea Cohen at 450-3434 to reserve space.

Cookin' good

The following new cookbooks are available at the Library: "The Community Kitchen's Complete Guide to Gourmet Coffee," which includes advice from the experts on beans, roasts and best methods for preparing wonderful coffee, recipes for delightful sweet and savory dishes, and a light history of a dark brew. Also "Betty Crocker's Cookbook," 1400 recipes tested in Betty Crocker's kitchen with calorie counts, and colored pictures.

Also "The Firefighters Cookbook," with more than 100 recipes for hearty easy to prepare, yet inexpensive meals from the kitchen of New York City's cooking firemen. "Mexican Cooking Class Cookbook" with appetizers, soups, tortilla dishes, poultry, tamales, salads Mexican style.

Also, "Roadfood and Good Food" an excellent guide to American food. "A Taste of Italy" with unusual and appealing Italian cuisine presented. "The Westcoast Bed and Breakfast Guide" with 86 locations outlined, with descriptive text and color photographs. "The Yan Can Cook Book," on how to use the wok and its accessories, and over 25 recipes with photos.

The Belle of Amherst

"The Belle of Amherst," a play about Emily Dickinson will be performed Wednesday, April 8 at 1 p.m. at the Belleville Public Library, 221 Washington Avenue. The play is directed by actor/director Ray Napolitano, also starring Mary Walker.

The actress, a certified English and Spanish teacher, is currently enrolled at HB Studio, New York. She has performed at the Nutley Little Theatre, the Montclair Dramatic Club, Montclair State College, Talent Time and the Actor's Cafe Theatre.

Call the Library at 450-3434 to reserve tickets free of charge. The program is sponsored by the Friends of the Belleville Public Library.

Bicentennial Books

The following books for the Bicentennial of the Constitution are available at the Library. They include "The Constitution of the United States," "This Constitution: Our Enduring Legacy," "The Constitution and What it Means Today," "A Detailed Analysis of the Constitution," "Framers of the Constitution," and "Rediscovering the Constitution." These books are helpful for a review of this important time period, or for students doing reports on the Constitution.

Friends Tribute cards

The Friends of the Belleville Public Library have now made Tribute Cards available. They cost \$2 and can be used for any occasion, birth, memorial, celebration, birthday, get well, graduation, marriage, etc. The cards are available from Josephine Coppola, 759-0357, Dorothy Charen, 759-8759 or Shirley Leardo at 450-3434.

Theatre Workshop

A Theatre Workshop given by Ray Napolitano, actor and director, will take place on Mondays, April 6, 13, 20, 27, May 4, 11, 18, June 1, 8 and 15 (performance) at the Library, 221 Washington Avenue at 7:15 to 8:30 p.m. Call 450-3434 to register. The cost for the class is \$20, payable in advance.

Take time to read!

Special Programs for National Library Week
April 5 to 11, 1987

Belleville Public Library, 221 Washington Avenue

Monday, April 6 — Theatre Workshop for teens and adults with Ray Napolitano, 7:15 to 8:45 p.m. \$20 fee for 10 sessions, starting April 6. Registration forms at the circulation desk.

Monday, April 6 — Book Sale, at the Mrs. Richard A. Shafter Branch Library, during library hours.

Tuesday, April 7 — Acting Workshop for Children with Gerry First, actor, 10-11 a.m. at the Library Meeting Room. Parents may also attend.

Tuesday, April 7 — Stipple Art with Joan Samsel, Belleville artist at 7 p.m. Part 3 of Art Workshop series.

Wednesday, April 8 — A Play Reading in honor of Emily Dickinson, 1 p.m. Meeting Room.

Wednesday, April 8 — Puppet show with Alice Cronin, children's librarian, 10 a.m. Meeting Room. Parents may also attend.

Wednesday, April 8 — Libraries in Focus Essay Contest Award for National Library Week, 3:30 p.m.

Thursday, April 9 — Graphologist Isabel Colin, will speak at the Friends of the Library Meeting, 7:30 p.m. \$2 donation.

Thursday, April 9 — National Library Week Book Award Contest Winners will be honored at 3:30 p.m.

Friday, April 10 — Book Bingo at the Mrs. Richard Shafter Branch Library, 3:30 p.m.

Friday, April 10 — Fairy Tale Creative Theatre at the Main Library for K-3 at 4 p.m.

Saturday, April 11 — Indoor Art Show, sponsored by the Friends of the Belleville Public Library and the Junior Woman's Club, 9:30-1 p.m. (obtain registration forms on circulation desk.)

THERE'S AN ALTERNATIVE! RESULTS MAKE THE DIFFERENCE



Save Time and Money

- SEED
- AERATION
- INSECT CONTROL
- FERTILIZER
- CRABGRASS CONTROL
- WEED CONTROL
- FUNGICIDE

Programs
FROM
\$30
per service



Spring is the best time to start or renovate your lawn.

For a FREE lawn analysis & estimate

call without obligation:
684-7999

ESTABLISHED BY THE U.S. DEPT. OF AGRICULTURE



Lawn Amat



SHOPRITE LIQUORS of Nutley

401 Franklin Avenue, Nutley

LIQUORS

Carstairs Blended Whiskey 1.75L \$11⁹⁹

Chivaz Regal Scotch 1.75L \$32⁹⁹

Old Grand Dad Bourbon 1.75L \$16⁹⁹

Gilbey's Gin 1.75L \$12⁹⁹

Bacardi Rum Silver or Amber 1.75L \$13⁹⁹

Crystal Blended Whiskey 1.75L \$10⁹⁹

Majorska Vodka 1.75L \$9⁹⁹

Dewar Scotch 1.75L \$19⁹⁹

Widmer Non Alcoholic Sparkling Juice 750 ml \$2⁹⁹

BEERS

Ballantine Beer 12 oz. cans 2-12 pks. \$6⁹⁹

Schmidts Regular, Light or Dark 12 oz. bottles case \$6⁹⁹

Crystal, Steg or Lieb 24-12 oz. bottles case \$4⁹⁹

Becks Regular or Dark 24-12 oz. bottles \$14⁹⁹

Dutchie Pretzels 20 oz. bag Buy 1 Get 1 Free

Heineken 12 oz. bottles 2-12 packs \$13⁹⁹

Bud 12 oz. bottles case of 24 \$9⁹⁹

Crystal Vodka 1.75L \$9⁹⁹

Korbel Brut or X-Dry Champagne 750 ml \$7⁹⁹

Barbella Soave, Bardolino, Valpolicella 1.5L \$3⁹⁹

Crown Russe Vodka 750 ml \$4⁹⁹

Chateau Luzerne Wine Chablis, Rhine, Barberone, Rose, Burgundy 4L \$4⁹⁹

COUPON

Black Label Beer
Regular or Light — 2-12 packs

\$5⁹⁹

WITH THIS COUPON

Offer Expires 4-7-87

COUPON

WINES

Robert Mondavi Red or White Table Wine 1.5L \$5⁹⁹

Mountain View Chardonnay 750 ml \$4⁹⁹

Davis Bynum White Zinfandel 750 ml \$3⁹⁹

Konocti Fume Blanc 750 ml \$5⁹⁹

Freixenet Cordon Negro or Carta Nevada 750 ml \$5⁹⁹

Mouton Cadet Red or White 750 ml \$4⁹⁹

Henri LaRoche Chardonnay 750 ml \$4⁹⁹

20% Off All Beaujolais Noveaus

Monsieur Henri Duna Merlot and Duna Sylvaner 750 ml \$1⁹⁹

Reale Asti Spumante 750 ml \$2⁹⁹

Vald'Orbieu Cabernet Auvignon 1L \$3⁹⁹

Macon Lugny Pinot Chardonnay 750 ml \$6⁹⁹

Monsieur Henri Les Doves Bordeaux 50 ml \$2⁹⁹

Guigal Cotes Du Rhone 50 ml \$6⁹⁹

Township troops host square dance at Belleville Middle School April 10

God bless the children who have their own, and for the Belleville Girl Scout Troop blessings will overflow.

The troop will sponsor their fourth annual square dance themed "Friends of Scouting," from six thirty p.m. to nine p.m., Friday, April 10 at the Middle School located on Washington Avenue. Proceeds will be donated to the Girl Scout Council of Greater Essex Friends of Scouting Drive.

The event celebrates 75 years of Girl Scouting in America and ear-

marks the 62nd year of its existence in Belleville.

To commemorate the Girl Scouts birthday celebration, participating troops will presents items for crafts and personal use to the Essex County Geriatric Center located on Franklin Avenue.

"This will serve as our contribution to the community," said District Chairperson Gloria Corriveau. Though the square dance is only for parents and registered Belleville Girl Scouts, donations will be accepted.

According to Corriveau, registration for participants in the troop is steady but volunteers to operate more troops is low.

"We are having some difficulty finding leaders," said Corriveau, "alot of people don't realize involvement only takes a couple of hours per week."

Though leadership shortages pose a temporary problem for Belleville Girl Scouts, survival is unquestionable and the troop dedication appears unparalleled.



Republican Roundup — Prominent Essex Republicans posed for paparazzi at recent campaign kickoff for Assemblywoman Marion Crecco. Pictured from left to right are: Richard P. Yanuzzi, Mrs. Crecco's Legislative Aide for Belleville, Commission candidate Vincent Frantantoni, President of the Concerned Citizens of Belleville; Assemblywoman Crecco, Essex County Executive Nicholas Amato, Phyllis Frantantoni, Debra Campione, and Nicholas Campione.



Gift of Life - The Belleville Rotary Club continues its active participation in Rotary International's "Gift of Life" Campaign. This fundraiser works to bring Korean children to America for very advanced heart surgery. Pictured above Dick Wallace, "Right to Life" Chairman of Rotary District 747 (left) thanks Rennai Gabbi of the Belleville Rotary Club for his generous support of this project.

Bifani on Belleville:

"With our youth comes our hope..."

(continued from page 1)

paratory programs offered at Belleville High School and other area schools, Italian American boys have a wide range of alternatives other than mobdom.

In similar fashion, it is the youth who can defeat this AIDS epidemic, which is more prevalent in Essex than in any other Jersey county. Except for the unfortunate transmission of the disease from afflicted expecting mothers to their newborns, AIDS is generational.

Media coverage of the AIDS crisis is likely to convince our young people to avoid activities like unnatural sex practices and sharing needles at heroin parties. Theoretically, this can cause a progressive percentage decrease off AIDS cases among successive generations.

With our youth comes our hope...hope that plagues like the Mafia and AIDS will defeated, simply by better educating our young.

Speaking of educating our young, Belleville's EXPO '87 proved to be a smashing success, proof that one of the best school systems in Essex is right here in town.

I'd say at least a couple thousand townspeople turned out for the event, which came off without a hitch and far exceeded even the most optimistic expectations.

Even folks who believed the show was politically motivated, that it was designed to help incumbent school board members get re-elected and get the current budget passed, left the expo amazed at how well it turned out.

Count me among these folks.

Looking back on last week's "Bifani on Belleville" I realize that

I gave quite a literary drubbing to Board President and EXPO '87 creator Phil Linfante. But even the townspeople who went out of their way to compliment me for that anti-censorship piece agreed that overall, EXPO '87 was one heckuva brainstorm. Congratulations, Phil!

Will there be an EXPO II?

You bet, according to various school officials. Whiz-kid Linfante supports putting it on every other year, saying that it could get stale if it's put on every year. Consolidated Home & School President Eileen Brown agrees with this suggestion. And so do I.

After all, if they decided to do it every three years, the politically motivated argument would be a hard one to disprove!

Moving right along, Monday evening is the debut for my new TV show, appropriately entitled "From the Editor's desk..."

The first broadcast will air at 9:30PM on OBC-TV Channel 36 on Monday, April 6. That's Election Eve for school board candidates, and our first show features interviews with all three of them.

The three candidates, for those of you who have been asleep or out-of-town for the past month, are incumbents Linfante and Sy Grossman and lone challenger Patricia Pisano.

And, despite the small field it appears to be the most interesting school board election Belleville had for quite some time. As my fellow Times columnist Jim Golden might say, there are big potential ramifications here.

First of all, if Pisano, who has

been endorsed by both town political parties, goes down in defeat, what will that say about the power of our traditional town parties?

But will she be beaten? How large of a protest vote will she pick up from people who are primarily going to the polls to vote down the budget?

Personally, I'm still not sure which two candidates I'll be pulling levers for. I think I'll make up my mind after I watch my show Monday night from the home side of the screen.

And, on a lighter note, Malone Avenue has two more feline neighbors, now that Remus and Romulus have been rescued by Yours Truly from the animal shelter in Newark. Those are the names I gave the two cats I chose from the great selection of beautiful animals they have who are looking for good homes.

I took advantage of my trip down there to snap a picture with Remus, Romulus and Lee Berenstein, the Executive Director of the statewide Associated Humane Society. Lee was a bit frazzled that day, because he was "chasing a goose down in Central Jersey with an arrow up its..."

Sadly, says Lee, the goose got away since it was still able to fly with the extra baggage. Lee vows, however, to have his men rescue the injured goose via a tranquilizer dart. We can only hope that by the time you read this, the goose will be saved before it's cooked.

Until next week...

Christopher Bifani

HIGHEST RATE
IN THE STATE

DON'T GAMBLE
WITH YOUR
RETIREMENT.
OUR IRA ACCOUNTS
ARE GUARANTEED!

12 MONTHS		36 MONTHS	
6.25%	6.06%	7.00%	6.77%
60 MONTHS		8.00%	7.70%

Special high rates are subject to change. See act now. Federal regulations require penalties for early withdrawals. Interest compounded continuously. Minimum deposit \$500.

All stocks and bonds—including Ginnie Maes and mutual funds—go up and down. If your equity value is down when you need cash, YOU LOSE MONEY.

With an F.D.I.C. Guaranteed IRA account at The Trust Company of New Jersey, YOU CANNOT LOSE, EVER. You choose the rate and the term of your investment—then sit back, relax and watch your investment grow. NO FEES OF ANY KIND!

START TODAY. The sooner you invest, the more you earn at The Trust Company because interest is compounded continuously. Plus, you save money on taxes—your IRA contribution will reduce your taxable income by up to \$4000 yearly.

ACT NOW! LAST CHANCE TO TAKE ADVANTAGE
OF TAX DEDUCTIONS FOR 1986!
GET OUR SPECIAL HIGH RATES TODAY
CALL TOLL-FREE 1-800-IRA-PROS

THE TRUST COMPANY
OF NEW JERSEY

The Billion Dollar Bank with Heart

Executive Office Journal Square, Jersey City, NJ • (201) 420-2500 • Offices throughout Bergen, Essex, Hudson, Middlesex, Morris & Passaic Counties • Assets One Billion Dollars • Member F.D.I.C.

BALNEO ESTHETIC INC.

From European Spas, Natural Beauty Care For Skin & Body



Elena Bellio
President

Our Services Include:

- **beauty care for skin:** individualized facials for acne, dry, oily, aging and sensitive condition.
- **beauty care for body:** seaweed wraps with tonifying and detoxifying effects.
- **beauty care for hands and feet:** herbal and seaweed therapy for specific conditions.
- **waxing:** legs, bikini lines, etc.
- **make-up:** using an excellent hypoallergenic French line.
- **consultation:** we offer free 1 hour beauty consultation.

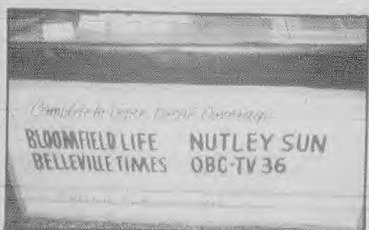
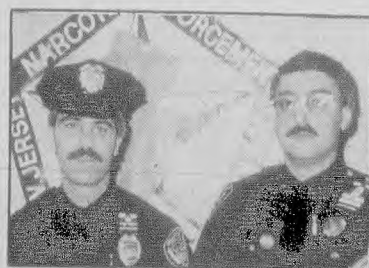
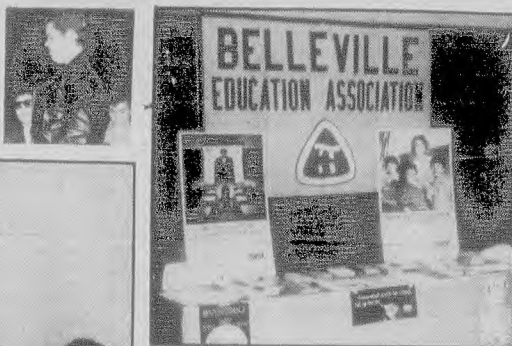
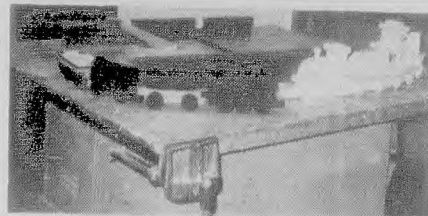
Natural European products for skin and body

521 Franklin Ave., Nutley, N. J. 07110 — (201) 661-1818
Open Mon. - Fri. 9:30 a.m. to 7 p.m., Sat. 9 a.m. to 5 p.m.



PICTURES at an exposition

Belleville Expo '87
Belleville High School
Saturday, March 28



Events in the Area

Support groups...

Overeaters Anonymous, self help group for compulsive overeaters or people with eating disorders. 334-1553.

Toughlove, for parents who have problems with their teens' behavior, 7:30 p.m. Thursdays, Parks Dept., 44 Park Ave., Nutley, 743-5511.

Living with Cancer, for cancer patients and their families, 7 to 9 p.m. third Wednesdays, Mountainside Hospital, Montclair, 429-6140 or 429-6128.

Recovery Inc., a community mental health self-help group for nervous persons, 7:30 p.m. Wednesdays, Parks Dept., 44 Park Ave., Nutley, 766-7466.

Make Today Count, a support group for patients and families dealing with cancer and other life-threatening illnesses, 7 p.m. Mondays, Clara Maass Medical Center, Belleville, 450-2230.

UNHOOKED, for drug and alcohol abuse, 6:45-8:00 noon to 7 p.m. Monday through Friday for New Jersey treatment referrals and substance abuse information. Confidential.

Women's support group, sponsored by The League for Family Service of Bloomfield and Glen Ridge. Women's issues and problems. Ongoing, 743-3737.

E.S.C.A.P.E., a mutual-aid, self-help group for adults who were abused physically or emotionally as children. Weekly meetings in Bloomfield. Free, confidential, open to all adults. Sponsored by Parents Anonymous. For more information or just to talk, call the Parents Anonymous Hotline, 1-800-843-5437.

Agoraphobics Anonymous, for persons suffering anxiety, panic, physical symptoms when leaving a place of safety or when in crowded areas, 8 p.m. bi-monthly at Verona Health Dept., 25 Grove Ave. No fees. 783-0007. For a copy of the newsletter, Agoraphobics Anonymous, c Essex Therapy Associates, 21 St. Luke's Place, Montclair, 07042. The only non-profit group in the state.

Epilepsy Support Group, 7:30 p.m. fourth Wednesday, Bloomfield Civic Center, 84 Broad St.

Women On Their Own, a support group for single, widowed or divorced women sponsored by Willowbrook Outreach Center, 7:30 p.m. first and third Thursdays, 2628 Willowbrook Mall, Wayne. Suggested donation: \$2.50 for Outreach members, \$3 for non-members. No age restrictions. For more information, 785-2224.

Anorexia nervosa, bulimia, compulsive overeating problems, free self-help group, 11 a.m. Apr. 4, 11, 514 South Livingston Ave., Livingston. Call Eating Disorders Hotline, 1-800-624-2268, for free information, counseling and referrals.

Alzheimer's Support Group of Willowbrook Outreach Center, 7:30 p.m. last Wednesday of the month, 1238 Willowbrook Mall, Wayne. Membership open to families of those stricken with Alzheimer's. 785-2224.

New Jersey Poison Information Education System hotline: 1-800-962-1253. NJPIES is equipped with a computer system that contains information on drugs and chemicals involved in poisoning incidents and can give immediate instructions on what to do. If necessary, you will be referred to an emergency room or private physician.

Bereavement support group sponsored by American Cancer Society and Hospital Center at Orange, six consecutive Monday afternoons starting Apr. 13, West Orange Public Library, 46 Mt. Pleasant Ave. Free. No transportation? Call 678-1990. For more information and to register, call Katherine at 678-1990.

For singles only...

Ministry to Separated and Divorced Catholics, 8 p.m. second Thursday, St. Thomas the Apostle Church, Byrd Ave., Bloomfield [library], L. Finamore, 743-3700.

ABC [Alone by Choice or Chance], 30-plus group of Passaic-Clifton YM-YWCA. Tuesday evenings at the Y, 199 Scoles Ave., Clifton, 779-2980.

New Jersey Moonrakers, tall and single adults, 8:30 p.m. second Tuesdays, Meadowlands Hilton, 2 Harmon Plaza, Secaucus. All ages. \$3 for guests, free for members. Dancing at "Heathers" following meeting. For information: Laura Hagan, 298-0964 or New Jersey Moonrakers, P.O. Box 12, Paramus.

The Singles Connection, single, widowed, divorced, separated, first and third Thursdays, 7:30 to 11 p.m., Grace Episcopal Church, 200 Highfield Lane, Nutley. Rap groups, music, dancing. \$4. 235-0177.

Jewish Singles, Friday night dance, 20's and 30's. 797-6877.

Singles dance, 7:30 p.m. to 12:30 a.m. Wednesdays, Springburn Manor, Springfield Ave., Union. Social, ballroom dancing. Orchestra, DJ, big band sound.

Success Oriented Singles [SOS], 845 first and third Fridays. 751-1419 or 226-5999.

Young Widowed Parents group, 7:30 p.m. first and third Mondays, Presbyterian Church, 730 Franklin Lakes Road, Franklin Lakes. Widows, widowers under 50 with or without dependent children. 796-5860 or 337-1519.

Parents Without Partners, Liberty Chapter 1044, bi-monthly dances first and third Fridays 8:30 p.m. to 12:30 a.m., North Arlington Knights of Columbus, 194 River Road. 991-0925. Orientation for prospective new members 7:30 to 8 p.m. Apr. 3, North Arlington Knights of Columbus; 7:30 p.m. Apr. 6, North Arlington Elks, 129 Ridge Road, followed by monthly chapter general meeting at 8:30 p.m.

Parents Without Partners, Wayne-Willowbrook Chapter 507, Tuesdays, 8 p.m., Wayne Manor, Rt. 23 South. Admission: \$5. Non-members must attend orientation and join before attending any PWP functions. Orientation every Tuesday 7:45 p.m.

Sacred Heart Singles, 8 p.m. Apr. 10, Nardiello Hall, 12 State St., Bloomfield. DJ, dancing instruction, refreshments. \$3 members, \$5 non-members. Father Danik at Sacred Heart Church for more information.

Club meetings...

Cosmopolitan Association, for foreign born women and their daughters, 7:30 p.m. second Thursdays, Bloomfield Civic Center, 84 Broad St. Associates, friends welcome as guests.

The Old Guard of Belleville, second and fourth Tuesdays, Fewsmith Memorial Presbyterian Church hall, Union Ave.

Essex County Legal Secretaries Association, 7:30 p.m. second Thursday, Bloomfield Civic Center, 84 Broad St. Membership open to persons engaged in any capacity in any law office, judicial system, trust departments of banks and companies or any public institution directly engaged in work of a legal nature. Lee Adamski, 994-2489; Lillian Murphy, 672-1616 after 6.

Women's Club of Bloomfield, p.m. Apr. 3, 10 Clarendon Place. Speaker: Eleanor Eving Schwartz, associate professor of library science and coordinator of the library of Kean College. Topic: "marian, the Librarian, Has Changed."

Essex Chapter of Medical Assistants, 7:30 p.m. Apr. 8, Doctors' Lecture Hall, Clara Maass Medical Center, Belleville. Topic: "Medicare and M.A.A.C.," an overview of the limits on charges to Medicare beneficiaries which may be made by non-participating physicians under the Omnibus Budget Reconciliation Act of 1986. Representative from Prudential will answer questions and provide information. Interested persons invited.

Roche Retiree Club, 1:30 p.m. Apr. 11, Bldg. 76 auditorium, Nutley complex. Bob Joepson, comedian and ventriloquist, will entertain.

Craft fairs, flea markets, rummage sales

Craft fair, flea market, Belleville High School parking lot, 100 Passaic Ave., 10 a.m. to 5 p.m. Apr. 26. Fundraiser for Belleville High School band. For information: 991-4856 or 997-9535.

Annual spring attic and rummage sale, Women's Society of Wesley United Methodist Church, 225 Washington Ave., Belleville, 9:30 a.m. to 2 p.m. Apr. 3, 9:30 a.m. to 12:30 p.m. Apr. 4.

Rummage sale, 10 a.m. to 4 p.m., Apr. 25, St. Paul's Congregational Church, Franklin Ave. at St. Paul's Place, Nutley. Clothes, furniture, linens, bric-a-brac, household goods. Bag sale: \$2.50, 2 to 4 p.m.

Craft fair and flea market, 10 a.m. to 5 p.m. Apr. 26, Belleville High School parking lot. Fundraiser for BHS band. For information, 991-4856 or 997-9535.

Fundraisers...

Annual card party, sponsored by Essex Salon No. 8 Eight and Forty, the subsidiary organization of the American Legion Auxiliary, Apr. 3, Nutley Post Home, 45 Franklin Ave. Proceeds to prevention and control of tuberculosis, cystic fibrosis and lung disorders in children. Donation: \$4. June Januszewski, 751-5752.

Easter Bunny Luncheon, 12 to 3 p.m., Apr. 4, St. Mary's Church basement, Msgr. Owens Place, Nutley. Lunch, visit from the Easter Bunny, magician and more. Tickets: \$4. Must be purchased in advance at St. Mary's Rectory. For information, 235-1100.

Luncheon, fashion show, sponsored by Mountainside Hospital Auxiliary for Second Century Building Campaign, noon, Apr. 9, Friar Tuck Inn, Cedar Grove. Fashions by Nanette Shop, Point Pleasant. For tickets at \$19, call 239-2448.

Dinner and fashion show, sponsored by School 7 O.P.E., 7 p.m. Apr. 9, Branch Brook Manor, Belleville. Fashions by Gadelle of Nutley. For tickets at \$18, call Ann Marie at 759-7320 or Terry at 759-0425.

Chinese auction, Fairview Home and School Assoc., 7 p.m. April 10, White Eagle Manor, Broughton Ave., Bloomfield. Tickets at \$7 include coffee, dessert, 10 auction tickets. Tables for eight or 10. Reservations to Linda DeLuca, 748-5247 or Cynthia Salvato, 748-6018.

Fish and chips fry, sponsored by Ladies Auxiliary, Bloomfield Elks 788, 6 to 8 p.m. Apr. 17, 395 Bloomfield Ave. For tickets at \$6, call Terry Smith, 743-2386. Public invited.

Chinese auction, sponsored by Association of Blind Athletes, 7 p.m. Apr. 23, Our Lady of Mount Carmel Parish Hall, 94 Pine St., Montclair. Donation: \$5. For tickets and information, Rose Ruffalo at 743-8688.

Chinese auction, sponsored by Our Lady of Mt. Carmel Church Ladies auxiliary, 8 p.m. Apr. 24, parish hall, Prospect and Harrison streets, Nutley. \$3 donation includes admission, tickets, refreshments. For information, Regina Basiak at 235-0051 or Jane Rembisz at 667-3076.

Columbus Hospital Women's Auxiliary, 6:30 p.m. April 28, Mayfair Farms Restaurant, West Orange. Tickets: \$25. Reservations: Mrs. Maria Alamo, 268-1458 (days) or 235-0337 (evenings). Fashions by The Gazebo, Bloomfield.

Dinner-fashion show, "Springtime at the Palace," sponsored by Women's Auxiliary of Nutley Family Service Bureau, 7 p.m. Apr. 29, at The Palace Restaurant, Kings Court, Lyndhurst. Fashions by Silvana Designs, Nutley. For tickets at \$20: Patti Piro at 235-0052 or Nutley Family Service Bureau, 667-1884.

Tricky Tray, 7 p.m. May 1, St. Clare Parish Center, 59 Allwood Road, Clifton. Sponsored by St. Clare Home and School Assoc. For tickets, 472-7117 or 667-6349.

One day trip to Amish Country, sponsored by Association of Blind Athletes, May 9. Donation: \$33. Bus, breakfast, 3-hour guided tour, supper at Good and Plenty. For tickets and information, Rose Ruffalo at 743-8688.

Luncheon and spring sale — sponsored by the Evening Membership Dept. of the Woman's Club of Nutley, 11:30 a.m. to 2 p.m. Apr. 10, clubhouse, 216 Chestnut St. \$3.50. For reservations, call 667-7120.

Card party — sponsored by Evening Membership Dept. of the Woman's Club of Nutley, 8 p.m. Apr. 23, clubhouse, 216 Chestnut St. \$4. Tricky Trays, brag bag. For reservations, call 667-5488 or 661-2920.

Class reunions...

Seton Hall University class of 1962, 25th reunion April 11, South Orange campus, Student Center. If not notified or with information about missing classmates, call Adele J. Cesario, 666-6111 or 664-4939; George Moffatt, 564-4089; John Darcy, 445-6722 or the Seton Hall Office of Alumni Relations, 761-9186.

Bloomfield High School class of 1937, 50 year reunion, Apr. 24, Friar Tuck Inn, Cedar Grove. Classmates not contacted call Cynthia (Downey) O'Connor, 992-3138; Barbara (Haacke) Platt, 773-2630; Mary (Kennah) McDermott, 783-9637.

Nutley High School classes of January and June 1937, May 2, Nutley Elks. Julia Giudice Fritchman, 625 Centre St., Nutley, 661-0677; Mavis Koch McKay, 181 River Road, Apt. 3G, Bldg. 3, Nutley, 667-3871.

Belleville High School class of 1937, May 16, Forest Hill Field Club, Bloomfield. Bob Shaughnessy, 759-2506; Bus Gausepohl, 748-5297.

Seton Hall University class of 1937, May 18, Mass at 11 a.m. in the University Chapel. Luncheon at 12 p.m. in Bishop Dougherty Student Center, South Orange Campus. Following graduation ceremonies at Brendan Byrne Arena, dinner at the Sheraton Meadowlands. Dinner: \$35 per person. For more information: Office of Alumni Relations, 761-9186.

West Side High School class of January 1949, Doreen Laurano Munzing, 38 Lexington Blvd., Clark, 07066, 381-3744; Frances Eham Bellak, 1238 Poplar Ave., Mountainside, 07092, 233-2899.

West Side High School class of June 1950, 37th anniversary reunion Sept. 12. For information, call Evelyn Rojy Ford, 233-0684 or Dominick Crincoli, 994-1897 or 225-6300.

Belleville High School class of 1977 Nov. 27, The Cottillion, Garfield. Call with information on graduates, Janice Lynn Nazzola Leffelline, 759-0695, Lisa Pica Falduto, 759-6024, Phil Linfante, 759-0323, Valerie Olivio Lucchetti, 481-4733.

Central High School, Newark, classes of January, June 1947, May 9, Nutley Elks. Gilda Luongo Mascola, 73 Coeyman Ave., Nutley, 07110, 235-1069; Rosemary Nottage Carnevale, 544 Jorammon St., Belleville, 07109, 759-6396.

Staff of Camp Hope, West Milford, 1962 through 1967. Reunion this fall. Interested parties call Marge at 546-4718 or write Tim Donnelly, P.O. Box 129, Pompton Lakes, 07442, 839-7856.

Seton Hall University, class of 1976, May 2, Mass in the University Chapel at 7 p.m. followed by reunion at 8 p.m., Galleon Room in Bishop Dougherty Student Center, South Orange Campus. \$38 per person. For more information, contact Office of Alumni Relations, 761-9186.

[To be included in this section, items must reach us by 3 p.m. the Friday preceding publication. Sorry, no exceptions. Send information to: Events in the Area, Orechio Publications, 800 Bloomfield Ave., Nutley, N.J., 07110. Limited to Belleville, Bloomfield, Nutley primarily. Other events included if space permits.]

Crown Chevrolet is the exclusive agent for...

MARK III CONVERSION VANS



America's #1 Van Conversion with all the most desirable luxury features is in stock now at Crown Chevrolet. For the price and delivery information contact Ed Saegers at

Crown Chevrolet

New Jersey's Chevrolet Underpricer
514 Washington Avenue, Belleville (201) 759-4200

The Choice of the People



7 Days
24 Hours
Delicious
Salad Bar!
Italian
Specialties!
Steaks & Chops

All baking done on premises • Homemade pastries
Children's Menu Available
Special Breakfast Menu: 6-11 a.m.
Daily Businessman's Lunch: 11 a.m.-3 p.m. Salad Bar Open 11 a.m.-10 p.m.
ALA CARTE and COMPLETE DINNER MENU

We're Always Open
WILLIE'S
DINER-RESTAURANT

9 State St., Bloomfield

Call 748-7414

*If you're in business,
do yourself a favor...*

ADVERTISE!

Call 667-2100
The Nutley Sun
Belleville Times
Bloomfield Life

Your Hometown Newspapers



Mary Anne Burkhardt — John Ventura Jr.

Mary Anne Burkhardt, John Ventura Jr. to wed

Mrs. Otto H. Burkhardt of Warren, formerly of Springfield, announces the engagement of her daughter, Mary Anne of Belleville, to John A. Ventura Jr., son of Mr. and Mrs. John A. Ventura of Nutley.

The wedding will take place Aug. 15.

Miss Burkhardt, an alumna of Union Catholic High School and

Senior Hill University, earned a bachelor of science in nursing and a master of arts in health education. She is director of in-service education and nurse recruiter at St. Mary's Hospital, Orange.

Mr. Ventura, a graduate of Nutley High School and Penn State University, is sales manager for Executive Coffee, Belleville.



Lights of Broadway — Loretta and Anthony DeSantis of Belleville will appear in "Lights of Broadway," the 27th annual ice show produced by the Essex Skating Club of New Jersey. The show will take place Apr. 10, 11 and 12 at South Mountain Arena to benefit the Special Olympics. 1986 Men's World Champion Brian Boitano and 1986 Ladies Silver Medalist Caryn Kadavy will also appear. Tickets are \$9.50 adults, \$8 student or senior citizen, \$5 child for evening performances and \$8 adult, \$6.50 student or senior citizen, \$5 child for matinees. For information or to make reservations by phone, call 731-8205.

Stork Club

Nicholas Isaiah Gory

A first child, a son, Nicholas Isaiah, was born to Mr. and Mrs. Isaiah Gory of Jersey City Mar. 13 at Clara Maass Medical Center, Belleville. Birth weight was 7 pounds, 3 ounces.

Mrs. Gory is the former Nancy Sanzari, daughter of Mrs. Beatrice Sanzari of Carlstadt. She is with Viking Penguin Inc., East Rutherford. Mr. Gory is with General Automotive Specialty, Carlstadt.

Vincent James DePinto

A second child, a son, Vincent James, was born to Mr. and Mrs. Len DePinto of Nutley Mar. 17 at Mountainside Hospital, Montclair. Birth weight was 8 pounds, 9 ounces. He joins Austin, two.

Mrs. DePinto is the former Marya Petry, daughter of Mrs. Eugenia Boland Petry of Belleville. Mr. DePinto, son of Mr. and Mrs. Vincenzo DePinto of Hoboken, is a project engineer with Railroad Construction Co., Inc., Paterson.

Christopher Eric Parrillo

A fourth child, a son, Christopher Eric, was born to Mr. and Mrs. Michael Parrillo of Belleville Mar. 17 at Clara Maass Medical Center, Belleville. Birth weight was 8 pounds, 4 ounces. He joins Kimberly, eight, Michael, five and Brian, two and a half.

Mrs. Parrillo is the former Theresa Kulyeshie, daughter of Mrs. Helen Kulyeshie of Belleville. Mr. Parrillo, son of Mr. and Mrs. Michael Parrillo of Belleville, is a real estate salesman with Century 21 Standford Agency, Nutley.

Ryan John Kranich

A first child, a son, Ryan John, was born to Mr. and Mrs. Rudy Kranich of Rivendale Mar. 17 at Chilton Memorial Hospital, Pompton Plains. Birth weight was 7 pounds, 6 ounces.

Mrs. Kranich is the former Barbara Morrison, daughter of Mr. and Mrs. Bill Morrison of Belleville. Mr. Kranich, son of Mr. and Mrs. John Kranich of Haledon, is a sales representative with RJM Sales, Scotch Plains.

Vanessa Jensine Alvarez

A second child, a daughter, Vanessa Jensine, was born to Mr. and Mrs. Carlos Alvarez of Belleville Mar. 18 at Clara Maass Medical Center, Belleville. Birth weight was 8 pounds, 15 ounces. She joins Melissa Priscilla, 14 months.

Mrs. Alvarez is the former Janneth Kingalahu, daughter of Mr. and Mrs. Ruben Kingalahu of Bloomfield. Mr. Alvarez, son of Mr. and Mrs. Hernan Alvarez of Guayaquil, Ecuador, is a teacher at Hago-Ma, Mountainside.

Michael Robert Iversen

A third child, a son, Michael Robert, was born to Mr. and Mrs. Thomas Iversen Mar. 9 at Clara Maass Medical Center, Belleville. Birth weight was 9 pounds, 7 ounces. He joins Thomas, seven and Christina, two.

Mrs. Iversen is the daughter of Mr. and Mrs. John R. Pizapio of Belleville. Mr. Iversen is the son of Mrs. Iversen of Nutley. Great grandmothers are Mrs. Mueller of Nutley and Mrs. Sarah Pizapio of Belleville.

Michael Robert D'Uva

A first child, a son, Michael Robert, was born to Mr. and Mrs. Robert G. D'Uva of Livingston Mar. 18 at St. Barnabas Medical Center, Livingston.

Mrs. D'Uva is the daughter of Mr. and Mrs. Carmine G. Penn of Belleville. Mr. D'Uva is the son of Mr. and Mrs. Robert C. D'Uva of West Caldwell.

Nicholas George Johnson

A first child, a son, Nicholas George, was born to Mr. and Mrs. George Johnson of Belleville Mar. 22 at Clara Maass Medical Center, Belleville. Birth weight was 6 pounds, 8 ounces.

Mrs. Johnson is the former Mary Beth Willis, daughter of Mr. and Mrs. Freas Willis of Belleville. Mr. Johnson, son of Mr. and Mrs. George Johnson of North Arlington, is a truck driver with Allied Building Supplies, Jersey City.

Clara Maass Guild holding luncheon, fashion show Apr. 8

The Clara Maass Medical Center Guild will sponsor its annual luncheon and fashion show 11:30 a.m. Apr. 8 at the Manor, West Orange. Mrs. Patty Parisi is luncheon chairperson.

Fashions, courtesy of The Tiger's Eye, will be modeled. Donations

are \$25 per person. For tickets and reservations, contact Mrs. John Poppenberg, 363 Crestmont Road, Cedar Grove, 07927.

Proceeds will benefit the Dr. Ralph Remondelli In-Service Nursing Fund and the Mary Ann Forline Scholarship Fund.

TONI ANN HAIR UNLIMITED

228 Belleville Ave. Belleville

759-9880

SPRING SPECIAL

April & May

PERMS- \$5.00 off any perm \$38.00 & up

Senior Citizen Days- Tues. & Wed
15% off Perms

Free conditioning with hair color

Waxing- \$5.00 off full-leg wax

Full Set nail tips and wraps... \$5.00 off

Joyce Marie Fiorenza to marry Barton Risoli

Peter Fiorenza of Newark announces the engagement of his daughter, Joyce Marie, to Barton (Barney) Risoli, son of Mrs. Florence Risoli of Belleville and the late Mr. Barney Risoli.

Miss Fiorenza, daughter also of the late Mrs. Lucy Fiorenza and a graduate of Essex County Vocational High School, is presently

at Joyce Marie Fiorenza of Bloomfield.

Mr. Risoli is with the Department of Public Works, Belleville.

Did you know

that we do not charge for putting your engagement, wedding or anniversary picture in the paper? And that most other papers do? All we ask is \$1 for postage and handling if you want your picture returned.

Albanese Electrolysis Studio

"Specializing in permanent hair removal"

If unwanted facial or body hair concerns you, why not call today for a free consultation

748-6223
572 Bloomfield Ave.
Bloomfield Center

PAUL A. CAPUTO D.P.M.

GENERAL and SURGICAL CARE of the FOOT

DAY EVENING and SATURDAY HOURS

345 Washington Ave.
Belleville, N.J.

759-6560

Frade's DELI*

PARTY PLATTERS TO ORDER
4 lb., 5 lb., 6 lb. Subs available
Cold Cut Trays, Salads and Sandwich Trays, order early

FREE DELIVERY

LAND O' LAKES
White or Yellow
AMERICAN
CHEESE
\$1.49
1/2 lb.

LEAN DOMESTIC
BOILED HAM
\$2.09
1 lb.

THUMANN'S
OVAL
SPICED
HAM
\$1.59
1/2 lb.

NEW HOURS
Mon. thru Sat.
7 AM - 7 PM
Sundays
8 AM - 3 PM

THUMANN'S
LIVERWURST
\$1.29
1 lb.

Stop in for Free Catering Brochure

EXTRA LARGE
EGGS
89c
doz.

PECORINO ROMANO
GRATED CHEESE
\$3.79
1 lb.

* WE ACCEPT FOOD STAMPS

311-313 Union Avenue
Belleville • 759-3509

BELLEVILLE - KEARNY OBSTETRICS - GYNECOLOGY

HOWARD GRODER, M.D.

JEFFREY ROSEN, M.D.

HIGH RISK PREGNANCY
INFERTILITY

Clara Maass
Professional Building
5 Franklin Avenue
Belleville, N.J. 07109
759-0700

Arlington
Medical Building
837 Kearny Ave.
Kearny, N.J. 07032
991-1519

"Serving The Community For 40 Years"

The more you shop at Grand Union,
the more you save.

Three years ago we lowered our regular prices and promised we would match the lowest leading chain... forever. We proved it with the Price Finder every week. We still have the low everyday prices, and we still prove it with the Price Finder. Every time you shop at Grand Union, you get the low everyday regular prices, plus Red Dot Specials, *always* less than our everyday prices.

That adds up.

Grand Union Consumer Price Finder



100% proof
of everyday
low prices.

Only the best, always for less.

U.S.D.A. Choice Ultra Trim Beef Loin

**Boneless
Sirloin Steak**



239¢
Lb.

Sweet Corn (17-oz.), Sweet Peas (17-oz.)

**Del Monte
Green Beans**

1-Lb.
Can

39¢

Super **GRAND UNION** Coupon

Regular or Diet Sprite or
**Coca-Cola
or Diet Coke**

One
2-Liter Btl.

69¢

No Minimum Purchase Required With This Coupon. Good
March 29 Thru April 4. Limit One Coupon Per Customer.

Fancy Solid Pack - In Water or Oil

**Bumble Bee
White Tuna**

6.5-oz.
Can

89¢



Grape Jam or
**Smucker's
Grape Jelly**

2-Lb.
Jar

99¢

Super **GRAND UNION** Coupon

Regular or Ridgies

**Wise
Potato Chips**

One
6.5-oz. Pkg.

69¢

No Minimum Purchase Required With This Coupon. Good
March 29 Thru April 4. Limit One Coupon Per Customer.

U.S.D.A. Grade 'A' Fresh Chicken

**Oven Stuffers
Drumsticks**

Lb.

59¢

Thompson

**Seedless
White Grapes**

Lb.

79¢



Assorted Varieties

**Friskies Buffet
Cat Food**

4 6-oz.
Cans

100¢

Not Less Than 75% Lean

**Fresh
Ground Beef**

Lb.

139¢

U.S.D.A. Grade 'A' Frozen - Twin Pack

**Gold Kist
Cornish Hens**

Lb.

99¢

Source of Potassium - Ripe

**Golden
Yellow Bananas**

Lb.

33¢

Pink Cocktail or Regular

**Ocean Spray
Grapefruit Juice**

48-oz.
Btl.

149¢

U.S.D.A. Grade 'A' Fresh

**Perdue
Chicken Breasts**

Whole
with
Ribs

Lb.

139¢

Meat

**Hygrade
Hot Dogs**

1-Lb.
Pkg.

89¢

California - Significant Source of Vitamin 'A'

**Fresh Tender
Green Broccoli**

Large
14 Size

Bunch

99¢

Decor., White, Colors or Arts & Flowers

**Scottowells
Big Roll**

124
Sheet
Roll

69¢

THE CORNER DELI
AVAILABLE IN STORES WITH SERVICE DELI

THE BIG FREEZER

DATE-LINE DAIRY

HOME AND FAMILY

**Land O Lakes
American Cheese**

Yellow or White

139¢
Half Lb.

**Jeno's
Cheese Pizza**

or Sausage 110.8-oz.

119¢
10-oz. Pkg.

**Dorman's
American Singles**

Colored

129¢
12-oz. Pkg.

**Rolaids
Antacid Tablets**

Regular or Mint - Sodium Free

199¢
Btl. of 75

**Fruited & Glazed
Turkey Breast**

Half
Lb.

199¢

**Frozen Concentrate
Tropicana
Orange Juice**

6-oz.
Can

59¢

Regular or Country Style - Chilled

**Minute Maid
Orange Juice**

64-oz.
Carton

139¢

Gel, Reg., Tartar Control or Regular or Mint

**Crest
Toothpaste**

4.6-oz.
Tube

119¢

354 Main Street
Belleville
759-9630

505 Allwood Road
Clifton
779-9413

710 Bloomfield Ave.
Glen Ridge
429-1921

GRAND UNION

MOST
GRAND UNIONS ARE
OPEN 24 HOURS

Check your local Grand Union for exact store hours.



Not Responsible For Typographical Errors. We Reserve The Right To Limit Quantities. For Store Information, Call Toll Free, 1-800-221-1835.
Prices and Offers Effective Sunday, Mar. 29 thru Saturday, Apr. 4, 1987.

Belleville Times SPORTS

Improvement and hope for the future. Those were the two key elements for the Belleville boys' junior varsity basketball team, 1986-87 edition. The team, under first year coach Mike Nicotia, posted two victories and showed marked improvement in the second half of the season.

"All the kids played well, especially in the second half of the year," said varsity coach Don Roll. "That's the key, the ability to improve as the year progresses. Now will be the key time for these young players. They have to play during the off season and attend basketball camps. The junior varsity and varsity teams will be playing in summer leagues this summer, so there will be time for the kids to play against good competition."

Sophomore swingman Dominick Straface led the way in scoring. He averaged 18 points a game and saw time on the varsity level throughout the season.

On the junior varsity level, Straface played mostly at forward. However, on the varsity, he was a guard and should be a guard on next years team.

Buc Shots



Sophomore guard Ray Zamloot was second in team scoring with a 12 ppg average. Zamloot, playing the point guard position, averaged six assists per game and also saw time on the varsity. Zamloot could be the heir apparent to Leon Puentes as the Buccaneer point guard. He is a good ball handler and has developed an understanding of the varsity offense.

Sophomore Michael Pucci was a good rebounder for the junior varsity.

"He was a good inside player," Roll said of Pucci. "Michael worked hard under the boards and pulled down some big rebounds."

Pucci, a 6'1" forward, could be a solid player on next years team, but as Roll mentioned, it's the off season work that will decide how good a player will be.

Vito D'Allesio, a sophomore forward, was another player who did well under the boards. The 5'11 forward was a good rebounder who gave 110 percent in each game.

A guard, Jerry D'Allesio showed excellent improvement as the year progressed. He came off the bench and did a good job for the Buccaneers.

Sophomore center Tim Cook was the teams leading rebounder.

"He progressed 100 percent from the beginning of the year," Roll said of Cook. "He has to play all summer, however, I hope he goes to basketball camp and works hard. He has the ability."

Cook stands 6'4" and is a member of the famous Cook family of Belleville. Cook's older brothers were excellent athletes at BHS during their days.

Junior forward Eugene Danek developed a fine turn around jump shot. The 6'1" player was a good inside player who has good strength.

Sophomore guard Anthony Lumbao has an excellent basketball background. He was a member of the Philippine Junior National Team before moving to Belleville last year.

"He has a lot of talent," Roll said of Lumbao. "However, he is small (Lumbao stands 5'4") and is still learning the offense. He is a fine ball handler and a good shooter. I'm looking for good things from him next year."

Another player who is limited on height, but not on desire and hustle was sophomore Mike Powers.

"He was the hardest working player on the team," Roll said of Powers. "He is 5'2", but nothing stopped him. He went in for rebounds, he never backed down. He was a darn good player for us. He reminds me a little of Joey Borrello (the Bucs fine point guard from 1982-84). He can do a lot with the ball."

Another sophomore, guard Herb Ingram also showed excellent improvement during the course of the season. Roll feels that Ingram can be a good player in future seasons, with continued hard work in the off season.

Three freshmen rounded out the junior varsity team. Chris Young, Andy Duhaime and Mike Trezza all have excellent potential.

Young, a guard, was the best ball handler on the freshman team. Duhaime, a guard, is an excellent outside shooter, with only experience needed to play on the varsity team. Trezza, a forward, comes from a knowledgeable basketball family. He is a hard worker and isn't afraid to play hard under the boards.

"Like I said," commented Roll, "the summer leagues will be coming up soon. The junior varsity players will be playing in the Bloomfield league and the varsity kids will probably see most of their time in the Elizabeth league. The kids have to work on their own, however. Basketball camp is a must and they have to go out there and work on their game."

All County Selections

Last week, the Star Ledger came out with its all county selections and Ted Sochaski was named to the third team. While Sochaski certainly deserves credit for the selection, it's hard to believe that he didn't deserve higher than third team. The man averaged over 24 points a game and if you saw him play, you knew he was one of the more dominant players in the county.

A junior, Sochaski should be one of the most watched players in the county, and possibly the state, next season. Let's hope the right people watch him and he gets the recognition he truly deserves. This man is one of the best players in the county and, hopefully, he'll be noted for that accolade next season.

Last Weeks Quiz

The only player from the 1976 Indiana basketball team that is active in the NBA today is Kent Benson, currently with the Utah Jazz. Benson has been a steady performer in the league, but never really developed into a star. In his first game in the NBA, back in the 1976-77 campaign, he was punched in the face by Kareem Abdul-Jabbar, who was playing his first game for the Lakers back then after being traded by the Milwaukee Bucks. Ironically, Benson was a member of the Bucks that season.

For This Week

As you know, this is Julius Erving's last season in the NBA. What season did Erving enter the NBA and what players did the New York Nets get from Philadelphia when they traded Erving to the Sixers?

New era in proud BHS rowing tradition

Fabian is new crew coach

There is a new era in the proud tradition of Belleville High School crew. As the Buccaneers begin the 1987 season on the high seas, a familiar face is no longer patrolling the waters, barking orders and overseeing things.

As most fans know, Sam Glufrida, the long time Belleville crew coach, suffered a heart attack last fall and has been on a long, but successful, road to

recovery. Thankfully, the coach is doing well, but he was forced to turn over the reigns to a new man, who hopes to continue the fine tradition.

Scott Fabian is the new head coach of Belleville crew in 1987. Fabian is not new to Belleville, however. He was the architect of the famed Belleville girls' crew teams that won national titles in 1982, '84 and '85. Fabian

will continue to work with the girls in '87 and will be assisted by Dennis Villano, Maureen Russo and Robert Cassin.

"There is a very positive attitude with the team," said Villano last week. "The kids are in good physical condition. We had our row-a-thon yesterday, (last Sunday afternoon) and the result were very positive."

The row-a-thon is sponsored by the Belleville Rowing Association and helps to raise money for the team, in addition to the funds allocated by the Board of Education. Although the financial report is not in yet, Villano expected a profit from the all day event.

The Belleville Rowing Association is sponsored by parents of the current rowers, and by parents of Belleville alumni that rowed crew. It has been in effect for several years. Currently, Theresa Cassin is the president, Lorraine Lemmi holds the office of vice president, Rita Batista is the treasurer and Issy Villano, the secretary.

"The kids rowed 20 miles overall," said Villano, "and the pledges were by the mile. We got some help from former rowers, that rowed with the kids for a couple of miles. It was a good event."

Getting back to the current team, the Bucs have already competed in a Flick race, a series of races held in Philadelphia during the course of the spring.

The Buccaneer Lightweight Four captured first place in Philly. The Lightweight boat is made up of five rowers. Each man can not exceed 145 pounds and the average weight, per man, has to be 140 pounds.

The shell is made up of Jerry Russo, Mike Kane, Mike McGuire, Vinnie Colaninno and coxswain Sue O'Donnell.

Last Saturday, the team took part in a tri race with Upper Merion and Kearny on Belleville's home port, the Passaic River in North Arlington.

Once again, the Lightweight Four took first place and was joined by a boys' junior four shell and a novice girls' eight shell.

The boys' junior shell consisted of Nelson Dias, Tom Eccles, Brian Villano, Gus Leming and coxswain Phil Molinari.

For the girls boat, the team consisted of coxswain Kristen Brauer, Michele Quick, Sue Aufiero, Loida Olmeda, Michele Clarizio, Charlene Santoro, Carolyn Loughlin, Jennifer Aiello and Liz Morris.

This Sunday, Belleville travels to Philadelphia again for another round of Flick races. On April 11, the Bucs will face a tough assignment when Poughkeepsie comes to town for a 10 a.m. start on the Passaic River.

For those not familiar with the Flicks, the races in Philadelphia match some of the top teams in the New York, New Jersey and Pennsylvania areas. The races are held on various Sunday's throughout the season, with the City Championships held in mid May, just before the big regattas.

Glufrida got Belleville involved with the Flicks in 1984 and the Bucs have fared very well in the races since then. Glufrida felt the races got his team ready for the prestigious regatta races in late May.

"Everyone has adjusted (to the coaching change)," said Villano. "I haven't coached crew in a while, but I'm enjoying it again. It's just good to see Sam (Glufrida) out there, cheering for us. He looks good and we're all pulling for him."

Amen.

NOTES: Villano, of course, was a long time wrestling coach at Belleville, having led the freshman team to a number of championships. He retired from that job just prior to the 1985-86 season. Villano coached crew, under Glufrida, 15 years ago. Some of the alumni who took part in the row-a-thon last Sunday were Sally Ann Dalton, Debbie Batista, Stephanie Aiello, Jill Lillis and Eric King. The Belleville Rowing Association provides scholarships for one boy and one girl each season. Team reported in excellent physical condition this season, having been on a lifting and running program all winter.

Defending champ balances training and raising infant

Ten days 'til the big race

It might require settling her year-old son into a car seat with her husband/coach driving along side while she trains, but Doreen Ennis-Schwartz would like to recapture the Cherry Blossom Run championship she held for a number of years.

Ennis-Schwartz and nearly 2,000 runners are expected to participate in this year's event, Sunday, April 12 at Branch Brook Park in Newark. This is the fourth year Blue Cross and Blue Shield of New Jersey is the major sponsor. The state's largest health insurer coordinates the event with the Essex County Department of Parks, Recreation and Cultural Affairs.

Ennis-Schwartz has been nationally ranked in every event, ranging from the 400-meters to the marathon. She has competed in 12 marathons, and this is her 17th year of competition. Her running prowess has enabled her to visit Russia, Poland, Germany and Japan.

Ennis-Schwartz took last year off from competition to give

birth, but she would like to regain the form that made her one of the state's premier female runners.

"It's hard to commit myself to races because of the baby," Ennis-Schwartz said. "He's (the baby) had a tough winter. But the Cherry Blossom Run is one of the races I am considering. I've won the women's race every time I've competed. That's four, five or six times, I'm really not sure to be honest with you. "It's a local race and it's a good caliber-type race," Ennis-Schwartz continued. "It's nice to run in the park at that time because it is really beautiful, and it is a well-organized event."

The 10-kilometer race is certified and sanctioned by the New Jersey Athletics Congress. The race will begin promptly at 10:00 a.m.

Her husband, John, has been her coach since she started running at the age of 13, and John was 18. The newest member of the family has given Doreen and

John another thing to think about.

"Right now, I'm pretty much on my own," Ennis-Schwartz explained. "With the baby, it's been hard. He (John) gives me good moral support. But he's got his attention divided in 11 or 12 different directions now. He's coaching track at Nutley High School, in addition to his other commitments."

"It used to be that running and my husband were my priorities," Ennis-Schwartz concluded. "But now, my husband and my baby are my priorities, and running has to take a back seat. My training is so sporadic, it's not where I would like to be. I would like to qualify for the Olympic marathon and that would take a sub-2:50 qualifying time. I've done that in 11 of the 12 marathons I've run in. It's just a matter of finding the marathon to qualify in and being able to train and gear up for it." It's also a matter of making sure baby is fed, first.

Big game at Union this Saturday

Girl softballers open season

Rain postponed a key scrimmage for the Belleville softball team last weekend, but head coach Carl Corino feels his team is ready for the start of the 1987 season.

"We got two scrimmages in last week," the eighth year coach said. "We're doing pretty well. The team is making steady progress. We're not where I'd like us to be, yet, but overall, we're in decent shape."

The girls opened the season yesterday with a home game against Hackensack. On Saturday, the team will play a big game at Union, in a 1:30 p.m. start. Belleville and Union are usually big rivals in the sectional tournament and the two teams stage some exciting games. Next Monday, Belleville will be host to Immaculate Heart in a 4 p.m. start and next Wednesday, the team travels to Paramus for a 4 p.m. start. All home games are played at Clearmon Field.

Corino was concerned about injuries as the season approached. Chief among that concern centered around senior catcher Laura Caruso. She has been hampered by a knee and ankle sprain and was questionable for the opener.

"We can't afford to lose her," Corino said. "We have some hard throwing pitchers this year and we need her experience."

Corino does have some young players with good athletic ability that are working behind

the plate. If Caruso can't make it, look for either freshman Laurie Moyer or sophomore Shannon Corris to catch.

The infield looks pretty well set. At first base is Cindy Ruggiero. Second base will feature sophomore Laurie Dondarski and the shortstop position will feature freshman Stacey Johansen. At third base is senior Trisha Tramultola.

In the outfield, Corino expects to use the "Three M's", (Raquel) Melson, (Carol) Morrison and (Maryann) McArthur. Also expected to see time is Natalie La Bella, but she has been hampered by a sore neck.

The scheduled pitcher for the opener was junior Jeanine Luzzi. Last season, she posted a 21-5 mark, the first hurler in Belleville history to win 20 games in a season. As a sophomore, Luzzi was the workhorse of the team, pitching in 28 of the teams 32 games. This season, with the emergence of Johansen as a top pitcher, Luzzi will not be expected to pitch as much.

When she is not on the mound, Corino will use Luzzi in the outfield. The junior is an excellent hitter and Corino plans on using her in every game. The same can be said of Johansen, who is also an excellent hitter and will play shortstop when not pitching.

"Neither pitcher will be overworked," Corino said.

Summer employment available

Applications for a Summer Youth Employment and Training Program are now available for Belleville students at the high school, middle school and St. Peter's school.

The program, funded under the federal Jobs Training Partnership Act, will be administered by the Essex County Division of Employment and Training and will place 45 handicapped and low-income youths from 14 to 21 years old in jobs or classroom training.

This program provides young people with an income during the summer months and an opportunity to learn valuable job skills and business etiquette in productive work settings.

Each of the participants will work a maximum of 25 hours a week for seven weeks at various sites throughout Belleville and are paid \$3.35 per hour.

Last year, the young adults worked as clerks, laborers, recreation assistants and hospital aides at

governmental and non-profit offices and institutions. Among common work-sites were municipal buildings, police departments, libraries, hospitals and schools.

Essex County has chosen "Youth and Work: A Winning Combination" for the theme of its summer jobs programs.

For applications call 450-3467. The deadline for entering the program is April 15, 1987.

Recreation Roundup

Women's volleyball results

After 11 weeks of play, Spiked Punch and the Jammers share the lead in the Women's Volleyball League with like 10-1 records. Spiked Punch defeated Cheers (6-5), 15-6, 15-6 and the Jammers topped the Moonlighters (3-8) 15-2, 15-9. The Friends (6-5) also won over the V.B. Busters (4-7) 15-9, 16-18, 15-11, while the Followers (3-8) won by forfeit over the Flamers (2-9).

Activity Schedule

For a daily tape recorded message on recreation, please call 759-3121

Soccer "F" License

An "F" license school will be held at the Friendly House on April 10, 7 to 10 p.m. and on April 11, 9 a.m. to 4 p.m. This school is required to coach recreation soccer and the participants will receive training on teaching basic soccer skills. Deadline for application is March 31. The soccer school is open to all interested. Please call Bob Travers at 759-6781 between 8 to 10 p.m. for information and to register.

Over 30 league results

The need for a championship playoff game in the Over 30 League seems apparent as Barry's Go Go and Nutley Pub remain tied at 10-1 going into the final week of regular season play. Barry's won 60-40 over the Belleville Knights (5-6) last week and Nutley Pub defeated Modern Millwork (2-9) 59-43. Megaro Memorial Home (7-5) edged Sally's Auto Parts (4-7) 50-49. Radio Shack (1-10) had a bye.

Playground applications available

The Belleville Recreation department has announced that applications for Summer Playground director positions are now available. Playground director positions are open to those who have completed their first year of college by the summer of 1987. Persons wishing to apply should phone the recreation department at 450-3433 weekdays.

A.S.A. Umpire Tests

The Belleville A.S.A. Umpire's Association will be conducting the Softball Umpire's Test on Monday April 20 at 7:30 p.m. at the Rec House, 407 Joralemon Street. Any adult, male or female, interested in taking the test, should call 450-3422 to obtain an application. There is a \$15 Exam fee. Persons who register for the test can attend the A.S.A. Softball Rules Clinics, to be given on Thursday, April 2 and Thursday April 16 at 7 p.m., to prepare them for the test. The clinics will be conducted by Al Porcello, Belleville's Umpire-in-Chief. The registration deadline is April 2. The course and test are open to persons 18 years of age and older, a 70 percent passing grade is required.

Men's basketball results

Quarter-final results are in from the Belleville Recreation Men's Basketball League playoffs last week. DeBacco's, the tournament favorite, defeated Nutley Pub 65-51, but Mirage, who were expected to at least survive this round, were upset by Allan's place 70-63. Veniero Trucking eliminated Troise Insurance 67-50 and STS Car Service Center rallied past the Falcons 76-52.

Firefighter!

Courtesy of Belleville Fire Department

Hot Tips

Good housekeeping helps prevent fires

Spring cleaning time is here again. Remember, a clean house is a safer house. The Belleville Fire Department reminds you that trash, boxes, piles of clothes and other combustibles in the home are fuel for a fire. Getting rid of them will help reduce the chance of fire in your home.

Clean out storage areas such as garages, attics, closets, sheds and basements on a regular basis. Even warehouses are limited to the amount of storage they can safely keep. Don't allow areas in your home to become tempting fuel for a fire. Throw away or give away items you are no longer using. Clutter gives fire a place to start and creates obstacles that might prevent escaping safely.

Only rags can ignite without a heat source because they produce their own heat. Throw them out or store them in a closed, metal container. This includes dusting rags used with a furniture polish or spray. For further information or fire safety and prevention contact the Belleville Fire Prevention Officer, Captain Andrew Vepzcek at 450-3374.

Support BHS Sports!

Strong optimism at start of baseball season

The Belleville baseball team began the 1987 season yesterday with a game at Hackensack and a strong optimism toward the upcoming campaign. Head coach George Zanfini, back as the number one man after a five year retirement, is looking forward to the start of the season.

"On paper, we should be a good ball club," the coach said. "We have the makings of a good team, but I'm concerned with our defense at this point. We

have to shore up our defense, if we hope to be good in those close games."

Belleville will be tested early in the '87 season. After yesterday's opener, the Bucs are slated to host Bergen Catholic in the home opener, tomorrow afternoon at 4 p.m. Next Monday, the team takes to the road for a 4 p.m. start at Don Bosco and next Wednesday, the Bucs are back home to face Paramus at 4.

"The first week to ten days will tell us a lot," Zanfini said. "By April 15, we'll know where we're going this season. We're playing some good' Bergen County schools in the early going, schools with good pitching. We've been strong, offensively, in the scrimmages, but we'll be up against some very good arms in the early going of the regular

season. The kids believe that offense wins games, I think that pitching and defense is decisive. I hope they prove me wrong."

The coach feels his team's lineup is where it should be as the opening game approached. "We have 17 players on the roster," Zanfini said. "There will be players going back and forth between the junior varsity and varsity, but overall, we have our team pretty well set."

The lineup for the opener at Hackensack, barring injuries, features a veteran, experienced crew.

Jim Dunphy, an All County hurler in 1986, is back and was slated to start opening day. Dunphy, a hard throwing southpaw, should be one of the stronger pitchers in the NNJIL and the county.

Al Best will play first base. Best made a key defensive play in the early stages of a scrimmage with Columbia last weekend.

"When we got on the bus after the scrimmage, I asked the kids what they felt the key to the game was," Zanfini recalled. "Most of them felt it was an offensive play, a home run, or something to that effect. However, it was Best's defensive play early in the game. It turned the momentum in our favor."

Belleville went on to sting the baseball in the Columbia scrimmage, scoring 12 runs.

Anyhow, Dean Mauro, a reliable hitter and fielder, will return at second base. While Mauro looks ready to go at second, the shortstop position was still up in the air as of last Monday.

Junior Jeff Spitsbury and senior Bob Hutchison are both vying for the position. Spitsbury was the shortstop for most of last season, and did a good job. Hutchison will be splitting time between shortstop and pitcher. Last year, he won four games and did an impressive job on the mound.

"Both players have looked good at shortstop," Zanfini said. "I really won't know who will

start until Wednesday."

Jay Marchese, a junior, will start at third base. Marchese is another player who will see time on the mound and when he does, Jamie Galito will move in from the outfield to play third.

The starting outfield for the opener featured seniors Lou Lucante, Dave Mc Neil and Galito. All three men are good' with the bat and have two years of varsity experience behind them.

The catcher will be Vito Caprio. Zanfini has been happy with the play of Caprio behind the plate in the pre season.

The Bucs are coming off a 20-11 season in 1986, a campaign in which the team made the finals of the Greater Newark Tournament and posted 20 wins for the first time in five years.

"Runs aren't going to come easily," warned Zanfini. "We've been hitting the ball well, but we're going to see some good pitching, especially in the early going. I just hope we're ready to play strong defense and not give away extra outs. In this league, you can't afford to give anything away."

There are lots of good reasons to rent a car...

Vacation SPECIAL OCCASION
SUBSTITUTE CAR
FRESH AIR Fun Car
EMERGENCY

WE HAVE LOTS OF GOOD CARS TO RENT! AT LOW RATES!!

Look at it another way. Just come in and see the great cars we have to rent at reasonable rates, including insurance. And even if you didn't need a rental when you walked in, you might convince yourself that you do before you walk out. It's worth a try.



Call Nancy Dowd At...

MEAD **515 WASHINGTON AVE., BELLEVILLE, 753 1200**



For the liveliest letters...
The Belleville Times

deep rich color



FUTURA 2000
SOLID VINYL SIDING

BY **CertainTeed**

CertainTeed research has achieved a technology breakthrough! Now solid vinyl siding is available in deeper, richer natural earthtone colors never before possible!

- 8 deep, rich "new" colors including barn red and timber brown
- Long-lasting beauty with hardly a care
- Lifetime Limited Warranty

Take your house into the 21st Century. For FREE estimate call:

PURA-TEX Aluminum Corp.
191 Belleville Ave.
Belleville, N.J. 07109
201-759-2200

7 WAYS TO REDUCE YOUR AUTO INSURANCE COST!
Stop in with your auto insurance policy and let us show you how! Our computer is programmed to search for the best coverage at the lowest cost to suit your needs.
HERE TODAY... HERE TOMORROW
serving the area since 1952
HARVEY KRAMER AGENCY INC.
INSURANCE
475 Washington Avenue, Belleville 201-751-1266



RUNS GOOD! LOOKS BAD!

Prices AS LOW AS
\$99.⁹⁵

- Thousands of color choices
- Oven-baked finish
- Free estimates
- Expert body repair
- Written guarantee



NUTLEY
113 E. Centre Street
(behind 67 E. Centre St.,
btwn Washington Ave. & River Rd.)
235-0801

MAACO Auto Painting & Bodyworks are independent franchisees of MAACO Enterprises. Prices and hours may vary. HOURS: Mon. thru Fri. 8am-5:30pm, Sat. 9am-1pm

Old Morris Canal fondly remembered

By Alan Branigan

The old and now defunct Morris Canal, which ran along the edge of Nutley, Bloomfield and Belleville for many decades, has been getting a good deal of media publicity lately. Most of the attention has been directed toward the lower end of the ancient waterway, where commuters are carried along in Newark Subway cars through the right of way that glides past Branch Brook Park in Newark.

At some places along the route, you can see the actual towpath, running along like a high bank just outside the trolley's windows.

Occasionally you can read of some efforts to do something about the Morris Canal basin along the Hudson River in Jersey City. At last reports this was just a morass of junk, with a few decayed barges here and there.

But there is another part of the Morris Canal which was pretty active back in the post-World War I era, just before the Canal up and died in 1923. Anyone who lived in Nutley or Bloomfield at that time must treasure memories of a great time to be a youngster, and a fortunate one, at that.

Some remnants of the canal can still be seen. Part of the waterway's trace runs along West Passaic Avenue in Bloomfield, up to the intersection of Hoover Avenue near St. Valentine Church. From that point, Kennedy Drive careens rapidly downhill, on the line of the old inclined plane.

At that point, the canal's barges were placed on a dolly which was hitched up to a donkey engine which slowly let the contraption down to the lower canal level, where it went past the old Oakes mill.

Today's road follows exactly the curve of the old incline past the Bloomfield High athletic stadium. In the old days, the engine at the top would be reversed and the returning boats would be hauled up the incline. They were empty by that time, having left off the cargo in Newark's farmer market or wherever.

Back in the 1920's, in my recollection, it was not unusual to stroll along the towpath and have to get off to one side while a man holding the reins of a horse or mule would walk along ahead of a barge going to market. The boat's rudder would be fixed to go counter to the horse's pulling, and the boat, laden with many kinds of freight, would go calmly down the canal. Sometimes the traffic would consist of a boating party, out for a jaunt along the rural scenery.

The canal, however, had other duties to perform. One surely was to stand in as a playground for the local urchins, of whom I happened to be one. The ancient waterway was a great place to learn to swim, with no current, no waves, no deep places, nothing injurious.

The young swimming novice, however, had to be alert, pushing aside the debris that the neighbors dumped into the water, along with an occasional dead cat or expired muskrat.

But swim we did. In one location, there was a huge tree stump leaning over the water and serving as a diving perch over a swimming hole. Few of the boys had bathing suits and so it was like a scene from a John Sloan painting of kids swimming in the Hudson River.

Sometimes well dressed young women would come along on horseback — it was a great bridle path — and the bad little boys

would have a great time trying to insult the visitors — and succeeding.

At one time my father was able to buy a canoe, a leaky veteran of unknown history. My brother and I patched it up with roofing asphalt, built a little two-wheeled cart and trundled the boat and its paddles up the hill to the canal. My dad loved to paddle and we would go for a blissful trip north.

The scenery was not spectacular. This was no Grand Canyon trip. Instead, there were fields of cabbage and corn in the then un-built Nutley and Brookdale fields. We would drift and paddle up past Passaic and almost into Paterson before regretfully turning around and paddling through the packs of urchins. They usually greeted us with catcalls, sticks and stones, nothing serious. It was a wonderful way to spend one of those endless days of a boyhood summer.

Where can one see the Morris Canal today? Some of it remains, believe it or not. It stands lined with willow trees and full of frogs and water lilies, in the little old colonial Village of Waterloo, just below the hurtling cars on Route 80, near Netcong. Just seeing the patch of water can take you back to an earlier, more innocent time.



Shh — Township student catches up on her reading in a designated quiet zone.

Quit smoking.



American Heart Association
WE'RE FIGHTING FOR YOUR LIFE

(201) 759-3968 Licensed Dealer

BULLET HOLE

Guns - Ammo - Reloading - Shooting Equipment

Collector Guns

Buy - Sell - Trade

338 Washington Ave.

Belleville, N.J. 07109

Obituaries

Josephine O'Neill, 74;

Josephine O'Neill, 74, of Nutley, died March 16 at Clara Maass Medical Center, Belleville.

Born in Newark, she resided there until moving to Nutley eight years ago.

Surviving are two daughters, Mrs. Kathleen Welsh of Nutley and Mrs. Sharon Welsh of South

Amboy; one son, Eugene of Cedar Grove; one sister, Marie Greco in Florida, and seven grandchildren.

A funeral Mass was offered at Holy Family Church, Nutley. Burial was from the Biondi Funeral Home of Nutley. Interment was at Holy Cross Cemetery March 19.

Victoria Nigdelis, 82; was born in Greece

Victoria Anderson Nigdelis, 82, of Nutley, died March 16 at Clara Maass Medical Center, Belleville. She was a housewife.

Born in Greece, Mrs. Nigdelis moved to Nutley from Belleville 11 years ago.

Her husband, Bill, predeceased her.

Surviving are two daughters, Mrs. Sophie Rallis and Mrs. Magdalene Keen; one sister

Lena Hourmouzis; one brother, Stefan; two grandchildren and five great-grandchildren.

A funeral service was held at the Franklin Reformed Church, with the Rev. Eugene Roberts officiating. Burial was from S.W. Brown & Son Funeral Home of Nutley, at Glendale Cemetery, Bloomfield, on March 19.

Crown Chevrolet
open letter to
the community

**Every car we sell
gives us a chance
to strut our stuff.**

CROWN CHEVROLET INC.

Dear Neighbor:

We'd like to let you know what Crown Chevrolet is all about. Our 41 dedicated, experienced employees work hard to give you the best possible service and selection at the lowest possible price. Our sales staff represents over 114 years of experience and our trained service technicians represent 142 years of mechanical service.

Like all dealers, we have costs and overhead, but we don't run misleading advertisements. When we sell you a car or truck you'll know you're getting an honest, fair deal with no highway hassle or gimmicks.

We want to greet you by name when you visit our showroom. Even if you're not in the market for a car or truck right now, come by and say hello. We're proud of the fact that 90% of our business is from repeat customers and referrals. At Crown Chevrolet, our aim is Quality not Quantity.

We attempt to maintain hours that are convenient for you, our customers and friends. We even keep our Parts Department open on Saturdays until 1 PM for your convenience. We arrange leasing and financing right here at Crown to make things easy for you.

When you buy or lease a car or truck, whether it is new or used, and whenever you come for service, we want to make sure that you find dealing with Crown Chevrolet a happy, pleasurable experience. If you have a question or problem concerning sales or service, please call a member of our management team and he will attend to it personally. We may not be perfect, but we're constantly striving for perfection. It is our goal to be your "home town" Chevrolet dealer.

J.J. Petrillo
President

John Abbracciamento
General Manager

Douglas Termot
Service Director

Crown Chevrolet

514 Washington Avenue, Belleville

759-4200

**RENT
FOR
LESS**

AFFORDABLE

- Daily
- Weekly
- Monthly

"Reconditioned
for Reliability"

AFFORDABLE

used car rentals

997-2110

Belleville Times

- Complete In-Depth Coverage of Local News
- Distribution by Subscription and Newsstand

HIGH READERSHIP — EFFECTIVE ADVERTISING

Over 15,000 readers

ORECHIO PUBLICATIONS

— SINCE 1894 —



FREE \$10 Energy Saver with a minimum \$20 Seal-Up Service

Get your choice of a FREE Water Heater Insulation Blanket OR a Low-Flow Showerhead plus up to 10 feet of Pipe Insulation, complete with installation.

- A PSE&G energy specialist will provide and install high-quality, energy-saving measures in your home.
- All work is unconditionally guaranteed for one year.

More comfort at less cost:

1. Caulking around window and door frames. Cost: \$5.50 per window or door.
2. Window and door weatherstripping. Cost: \$6.00 per window or door.
3. Wrapping your water heater tank with an insulation blanket. Cost: \$10.00 per water heater.
4. Low-flow energy-saving showerhead. Cost: \$7.50/showerhead.
5. Pipe insulation. Cost: 55 cents/ft. of hot water pipe (up to 3/4" pipe). 75 cents/ft. of steam pipe (up to 2" pipe).
6. Duct insulation (for hot air systems). Cost: \$3.00/linear foot of duct.

Avoid the rush! Call PSE&G now at 1-800-854-4444 weekdays between 9AM-5PM. Or fill out the coupon and send it to us.

Available to PSE&G Residential Space Heating or Water Heating Customers. Both Homeowners and Renters are eligible.

SEND NO MONEY. Payment is made to the installer when the work is completed. You pay only for the



PSE&G Public Service Electric and Gas Company

Subsidiary of PUBLIC SERVICE ENTERPRISE GROUP INCORPORATED.

services performed. Payment by check, cash, VISA or MasterCard. Minimum order \$20.00.

Please allow 30 to 60 days for installation. Many other Seal-Up measures are available, such as: doorsweeps, faucet aerators, interior plastic storm windows, and air-conditioning caulking. Call for further details.

Offer expires June 30, 1987!

"Seal-Up and Save...it's elementary!"

PSE&G Customer Seal-Up Service Program

I would like the following free energy-saver to be installed along with my \$20 minimum Seal-Up Order. Please check only one:

- ☐ Water Heater Insulation Blanket or
- ☐ Low-Flow Showerhead plus up to 10 ft. of Pipe Insulation.

Please call me to arrange an appointment to install the following items:

Item	Installed Cost	Quantity Requested
Caulking	\$ 5.50 ea.	_____ windows
	\$ 5.50 ea.	_____ doors
Weatherstripping	\$ 6.00 ea.	_____ windows
	\$ 6.00 ea.	_____ doors
Showerheads	\$ 7.50 ea.	_____
Water heater wrap	\$10.00 ea.	_____
Pipe insulation	\$.55 - .75/ft.	_____ ft.
Duct insulation	\$ 3.00/ft.	_____ ft.

PSE&G Account No. _____ (Must be filled in to process orders)

Name _____ (Please print clearly)

Address _____

City _____ State _____ Zip _____

Phone # (Home) _____ (Business) _____

- ☐ Please send me additional Customer Seal-Up Service information.
- ☐ Please arrange for a free home energy survey so I can best decide what I need installed.

Mail Coupon to: PSE&G Energy Conservation Center
P.O. Box 1258
Newark, NJ 07101-9956

(continued from page 4)

tracted for five million gallons per day, and somebody in town dropped the ball requiring Nutley to pay for five million gallons per day — and also making no provision for an exchange of water since Nutley cannot take water directly from the Wanauque South Project. This was a fact that Nutley officials in 1981 acknowledged in black and white. But nobody — nobody — with the responsibility for the Water Department did anything about negotiating an exchange fee with either the Passaic Valley Water Commission or the City of Newark — either facility being available for Nutley's convenience. It would be cheaper for Nutley officials to deal with Newark since Newark water would reach Nutley via gravity, whereas Passaic Valley Water Commission would be required to pump water into Nutley.

Former Belleville Board of Education President Grace Purdue disappointed me, and many of her friends as well, upon her decision not to become a candidate for the Township Commission. Grace has much to offer the public. She has experience, integrity, competence and dedication. A native-born citizen, Grace has made her mark in public affairs. We hope the present is a quiet interlude in her life — and that the future will give citizens an opportunity to once again bring Grace back to service in the public arena.

Down Memory Lane

I remember the days when, under another ownership, the Nutley Sun seldom, if ever, printed an article about the people who populated the Avondale and Big Tree sections of Nutley. These are areas in the southeastern corner of town. It seems the only time any story appeared in the Nutley Sun of that day, involved a criminal act or an appearance before the local judge. The black-

out of news about Avondale and Big Tree people led me to publish a mimeographed newspaper for each neighborhood. The Park Avenue neighborhood newspaper was called "The Avondale Fact Finder" and the area to the south bounded by East Centre Street, Centre Street and Washington Avenue to the Belleville line, was identified as "The Big Tree Fact Finder." I published the local "newspapers" until World War II called me into service.

Memorable incidents in my lifetime involved swimming in the old Delawanna Canal. I was about twelve years old and an incident occurred that almost ended my life. I also recall the experience of a teacher tying my left hand behind my back. The result proved to be a disaster, and next week I will discuss the details.



You all remember the singing star of yesteryear from Newark — Phil Brito? Well, my brother, Carl and I — and our wives — enjoyed hearing his melodious voice at Boca Raton's Upper Deck Restaurant on the ocean. Phil is still as good as he ever was. And he brought back fond memories of yesteryears. What a pleasant surprise to see and hear Phil again.

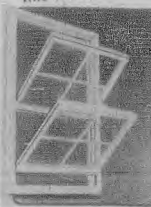
GRAND OPENING SALE

OF OUR NEW SHOWROOM

GRAND OPENING SPECIAL

OFFER ENDS APRIL 30, 1987

NEVER BEFORE SOLD AT THIS PRICE



IDEAL'S PREMIUM VINYL REPLACEMENT WINDOW

INCREDIBLY PRICED **\$179⁰⁰**

*Window Only. Minimum Order 5 Windows.

BELOW FACTORY PRICES

INSTALLED OVER WOOD FRAME UP TO 92 U.I.

FREE SCREEN Included With Each Window Purchased

WE ALSO CARRY...

- STORM WINDOWS & DOORS
- BOW & BAY WINDOWS
- SLIDERS
- PATIO DOORS
- STEEL INSULATED DOORS
- VELUX SKYLIGHTS

GLASS & SCREEN REPAIR

- LEVELOR & BALI Mini Blinds
- CUSTOM VERTICAL BLINDS 30%-50% OFF
- Hundreds of Styles to Choose From
- WALL MIRRORS
- Custom Made & Installed

- Made by N.J.'s largest window manufacturer with over 60 years of window experience.
- 7/8" insulated float glass
- Tilt in for easy cleaning
- Security locks
- Save up to 40% on fuel bills

478-7420

ANDERSON WINDOW CENTER

SAVE ENERGY CO.

700 Riverside Ave., Lyndhurst, NJ • 478-7420

Open Thurs. until 8 p.m. Mon. thru Sat. until 6 p.m.

DIRECTIONS: Route 3 East to Riverside Ave. Turn left to 700 Riverside Ave. — just south of Lyndhurst Center.

We have the Home For You



Real Estate Briefcase

By Jack Reilly, G.R.I.

When and what is American Home Week? — R. Sommes, Belleville

Beginning April 26 and ending May 2, American Home Week is a nationwide celebration of home ownership and private property rights for people, business and industry, which is sponsored largely by the National Association of Realtors. This year's theme is "Let's Make Our Town A Family" and, as in past years, underscores the promise that Realtors are concerned working partners in enhancing and preserving America's local neighborhoods and communities.

Realtors first organized their involvement in the social, civic and patriotic values of their communities back in 1956 when "Realtor Week" was created to emphasize the value of home ownership as the bedrock of our democracy. In 1975 the name was changed to "Private Property Week" with the objective to preserve and protect the basic human and constitutional right to own, use and transfer property. With the change in 1986 to American Home Week, there is a renewed commitment to the objective of promoting homeownership in its many forms: farmsteads, businesses, industries, offices and homes.

In declaring April 26 through May 2 as American Home Week, President Reagan said, "American Home Week affords all Americans the opportunity to celebrate the fundamental value of home ownership. It is a week to reflect on the social and economic benefits the housing industry provides to our nation. Thanks to our free enterprise system, millions of Americans are able to provide safe, secure and affordable housing. Our communities, our nation,



Jack Reilly

and the institution of the family itself are much stronger thereby."

Over the years, government interference has been eroding many of the basic rights of property ownership through unreasonable limitations imposed by law which have very little to do with the public good. Overly restrictive and unnecessary building codes, zoning laws, rent controls, and unreasonable environmental laws all deny the pressing need for adequate affordable housing which, with the rising cost of ownership, bars certain economic classes of our society from home ownership. The "pursuit of happiness" is restricted, making the preservation of private property rights fundamental to the enjoyment of human rights.

For the last 32 years, American Home Week has been an opportunity for Realtors and the communities they serve to join together and inspire new pride in property ownership and work together to protect private property rights from unfair governmental intervention.

Attention Realtors!

This special section was created for you and contains editorial copy submitted by you, geared to your local market. An interesting and appealing section that our readers look forward to each week and keep as a handy reference guide. This section is the perfect advertising vehicle for you, the realtors.

If you believe that the only place to publish your listings is in the larger circulation dailies, or your town paper only, you're missing out on a market that is right at your fingertips. When a family is looking to purchase a home, they are willing to move outside of their town — if the price is right and the location near enough to meet their needs.

We all know that... visibility opens the door to sales.

What better way to be visible than to publish your weekly listing right here in this special realtor's page, where it will be seen by a select readership with one of the highest degrees of purchasing power and discretionary income in Essex County.

The readers of...
The Nutley Sun
Belleville Times
Bloomfield Life

Who sells more homes?

Elaine Raine holds the honor of being top salesperson for 1986. If you're thinking of selling, talk to Number 1. Call Elaine today at Century 21, Wayne K. Thomas Realtors, 277 Broad St., Bloomfield N.J. 429-7400.



264 Belleville Ave.
Bloomfield



RESIDENTIAL/COMMERCIAL/BUSINESS SALES
APPRAISALS & PROPERTY MANAGEMENT

FREE
MARKET
ANALYSIS

Serving:
BLOOMFIELD • NUTLEY
BELLEVILLE • GLEN RIDGE • NEWARK

APARTMENT
RENTALS

Raymond P. Marzulli Co., Inc.



743-2300

RENTALS
Belleville
1 family house - totally renovated \$700 plus utilities.
Belleville
Available 7/1/87 - 2 bedroom apt in private home. \$600 plus utilities.
2 brand new 5 rm. apts. avail 4/1/87. Central air, all conveniences, parking, call for particulars.

New Listings of the Week

Nutley - 4 bedroom Spring Garden Colonial Private cul de sac street. Asking \$186,000. Your offer could take it.
Nutley - 20 yr. old bi-level in Nutley Park deep lot, beautiful home in prestigious area, lg. family room, flagstone patio, possible mother-daughter.
Bloomfield - Brookdale Split - Owner must SELL! This 3 bedroom (& possibly 4) 2 1/2 baths, mod. split level in top area on private street. Owner has purchased another home. Offered at \$219,900.

DePIRO
REALTORS (201) 667-0006
85 Franklin Ave., Nutley, NJ 07110

SELLING
HERE

COSTANTINE REALTY

289 Franklin Avenue
Nutley, New Jersey • 07110
667-7070

THREE (3) MULTIPLE LISTING SERVICES FROM ONE CONVENIENTLY LOCATED OFFICE, TO PERSONALLY SERVE YOUR REAL ESTATE NEEDS.

MEADOWLANDS MLS • SERVING THE SOUTH BERGEN AREA • NORTHERN N.J. MLS • SERVING PASSAIC COUNTY • NUTLEY, BLOOMFIELD, GLEN RIDGE & BELLEVILLE MLS

ALL OR PARTS OF 5 COUNTIES, AND OVER 80 COMMUNITIES, WITH OVER 350 MEMBER OFFICES AND OVER 5,000 SALES ASSOCIATES. TO GIVE THE HOME WE ARE MARKETING GREATER EXPOSURE. TO GIVE THE PERSPECTIVE PURCHASER A FAR GREATER SELECTION. SPECIAL ATTENTION GIVEN TO THE FINANCIAL PART OF YOUR TRANSACTION ASSISTING YOU WITH THE RIGHT TYPE OF MORTGAGE, FOR YOUR INDIVIDUAL FINANCIAL POSITION.

ESSEX BERGEN HUDSON MORRIS PASSAIC

Belleville
Butler
Clifford
Franklin Lakes
Hackensack
Harrison
Haworth
Kearny
Lodi
Meadowdale
Montclair
North Plainfield
Oakridge
Parsippany
Raritan
Roseland
Sparks
Trenton
Wallington
Wyckoff

Bloomfield
Caldwell
E. Newark
Garfield
Hoboken
Hudson Heights
Irvington
Kinnelon
Lyndhurst
Maple
New Brunswick
North Newark
Plastic
Pompton Plains
Riverside
Succasunna
Towaco
Wanaque
Woodbridge

Bloomfield
Carmel
E. Orange
Glen Ridge
Haddonfield
Haddon Heights
Jefferson
Little Falls
Mt. Airy
Montclair
New Arlington
Rahway
Rutherford
Saddle Brook
Union
Upper Montclair
Wallbridge
Westfield

Bloomfield
Cedar Grove
E. Rutherford
Glen Rock
Haddonfield
Haddon Heights
Jersey City
Linc. Park
Midland Park
Montclair
N. Caldwell
Oakland
Parsippany
Rahway
Saddle Brook
Saddle River
Union
Wallbridge
Westfield

BUYING
THERE

FREE MARKET ANALYSIS
CALL TODAY
COSTANTINE REALTY
667-7070

BLOOMFIELD CONDO MANIA - \$116,900



21' living room w/sliders to balcony, dining room, modern kitchen & tile bath, large master bedroom - hardwood floors thru-out. Near N.Y. bus.



Living room/dining room combo, new European kitchen. New appliances including dishwasher, range and refrigerator. Large master bedroom, garage, new wall to wall carpeting.

BELLEVILLE

BRICK CONDO BARGAINS

1 1/2 room studio unit w/kitchen and modern bath \$59,000

3 1/2 room - living room, dining area, bedroom, kitchen, modern bath. Starting at \$79,000



GLEN RIDGE

Attention Investors

\$235,000
Inspect this well kept 2 family with 3 incomes - Each apt. has large LR, eat-in kitchen, 2 BR's & modern bath (2 apts. vacant). Income potential \$23,400. Tenants pay heat & utilities. 1/2 block to N.Y. train/bus.

TO INSPECT CALL: Arthur L. Grutt, Realtor

GLENWOOD Real Estate Agency

905 BROAD ST., BLOOMFIELD 429-7380

FREE MONEY

Well, not really. But Home Ownership provides you with the next best thing: EQUITY. So if you own a home, call us to find out how much free money you've got. If you don't own a home ... what are you waiting for?

REILLY REALTORS

Since 1915

759-1682

MARGIE McDONALD

Realtor L.T.D.

316 Broad St., Bloomfield

429-7372



BROOKDALE-NEWER 2 FAMILY

Immaculate-maintenance free 5 mod rms-first flr. includes lge eat-in kit w/ dishwasher & wall oven, remodeled modern bath, spacious LR, 3 BRs. 2nd flr offers a lovely 3 rm. apt + attic storage. Egress from both floors. Finished basement w/ 1/2 bath + laund. Nice yard w/ pool, 2 storage sheds, 2 driveways & attached garage. Great family neighborhood, bus & shopping at corner & down the street to the park. Come see.

Margie McDonald Realtor is seeking for top notch experienced full time sales people. We're offering excellent comm. splits to qualified people. All inquiries are confidential. Eve. 894-7372.



HOUSE OF THE WEEK

\$164,900
Maintenance free alum. sided exterior. Large LR w/wood-burning stove. Formal dining room, for the entertaining family, mod eat in kitchen, powder room, three bedrooms, full modern bath. Finished basement. Above ground pool. Garage w/extra lot. Call for your appointment now.



FIRST CENTURY REAL ESTATE

692 Passaic Avenue
Nutley, New Jersey 07110

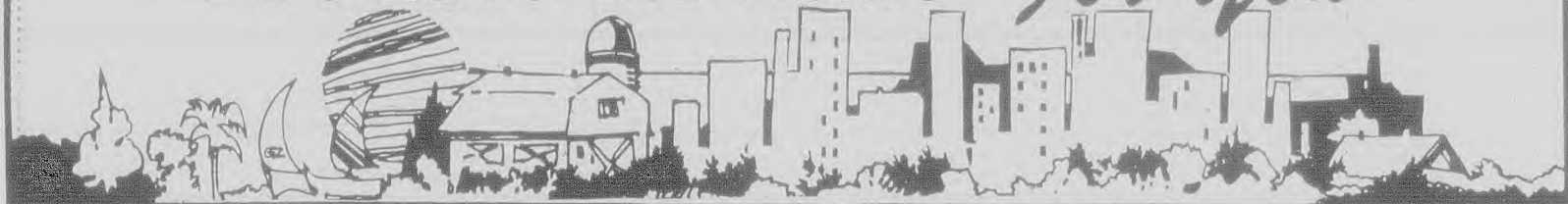
235-0440



Put Number 1 to work for you.

EACH OFFICE IS INDEPENDENTLY OWNED AND OPERATED

—We have the Home For You—



180 Centre St.
Nutley, N.J. 07110
667-3440

GEORGE E. MAC MUNN CO.
REALTORS

100 Woodport Road
Sparta, N.J. 07871
729-8727



OPEN HOUSE - SUNDAY - 14PM - NUTLEY 15 Sunset Dr. East (off Coeyman Ave. near Alexander) 3 extra lg. bedrooms, sunny rear encl. porch, central air, finished fam. rm., frpl, 1 1/2 baths & att. garage. A REAL GEM! ASKING \$189,900.



NUTLEY - SLEEPY HOLLOW - 5 rooms, sunken Liv. Rm. w/wet bar for gracious entertaining, beautifully appointed, sliders to private patio, many extras. ASKING \$156,900.

**DO YOU KNOW
WHAT YOUR
HOUSE IS
WORTH
TODAY?**

We offer a current market
Value analysis ...
Just pick up the phone & call

Look for this Emblem



REALTOR



LOVELY AREA OF HOPATCONG (SUSSEX SIDE) with all comparable homes, 4 bedrooms, 1 1/2 baths, eat-in kit, sundeck off Master BR, Fam. Rm. w/sliders to private level yard. ASKING \$169,900.



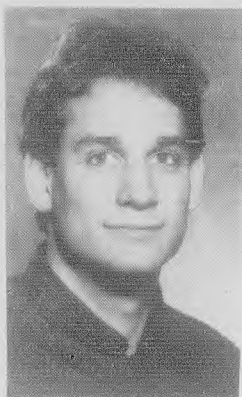
LAKE MOHAWK - beautifully set on quiet Street, a short walk to beach, 4 Bedrooms, 2 baths, fam. rm. w/frpl, spectacular rear deck overlooking wooded landscaped prop. Perfect cond. throughout. ASKING \$269,900.

Weichert welcomes Robert Gitin to Clifton office

CLIFTON, NJ, March 1987 — Robert Gitin has joined Weichert Realtors' Clifton office as a licensed real estate associate. The announcement is made by Gary Molner, office manager.

When coming to Weichert, all associates must complete an extensive, 120-hour training program which helps to prepare them for a successful career with Weichert. All associates must be fully knowledgeable of the services offered home buyers and sellers. These services include corporate relocation, mortgage assistance, insurance, real estate licensing, equity advance, plus more.

Gitin is a 10-year resident of Pompton Plains. For answers to your real estate questions, he can be reached at 779-1900 or in person at Weichert's Clifton office located at 795 Clifton Avenue.



Robert Gitin



From left to right: Gerri Berardinelli, recruiter/trainer; Elaine Raine, agent of the year; Wayne K. Thomas, broker/manager.

Top salesperson named

Elaine Raine, sales representative for Century 21, Wayne K. Thomas Realtors, 277 Broad St., Bloomfield, was awarded the honor of being top salesperson in her office for the year of 1986.

She won the honor by attaining the highest volume of closed sales and listings in her office for the entire year of 1986. The award was announced at the office's quarterly dinner meeting on March 12 and a plaque will be on display in the office.

Elaine, a Bloomfield resident has been affiliated with Century 21, Wayne K. Thomas Realtors since 1984.

SPRING SPECIALS

A TOUCH OF CLASS
Gorgeous new center hall Colonial with central air conditioning & central vacuum plus large kitchen & family room both with sliding doors to rear deck. 3 good sized bedrooms, 2 1/2 baths plus many other delightful features. Transferred owner would like offers on asking price of \$305,000.

YANTACAW COLONIAL
8 room vinyl sided home with rear family room overlooking 175' deep lot. 2 1/2 baths, 3 bedrooms plus finished 3rd & just a stone's throw to New York bus. Asking \$239,000.

BELLEVILLE

At an asking price of \$184,500 this immaculate Colonial will sell quickly. Lovely new kitchen, 1 1/2 baths, 3 bedrooms, large rear fenced in yard.

DO YOU KNOW THE MARKET VALUE OF YOUR HOME? CALL US FOR OUR OPINION WITHOUT COST OR OBLIGATION TO LIST OR SELL.

EVERYONE KNOWS

GEORGE T. BOWES
YOUR NUTLEY REALTOR SINCE 1933
681 FRANKLIN AVE. NUTLEY 667-3376



A POET'S RETREAT

Nestled on the side of the mountain in the Stonebridge Estate section. Two floors of living space complete with all the amenities such as; two fireplaces, 4 zone lawn sprinkler system, central air plus much more! Absolute perfection for \$399,000.

SCHULZ REAL ESTATE
50 Church Street
Montclair, N.J. 783-5058



ONE YEAR WARRANTY

549 Washington Ave.
Belleville, NJ 07109
Century 21 HOMES R US 751-8800

Put Number 1 to work for you.



"BELLEVILLE TOWNHOUSE"

Drive into the garage and walk into the family room w/ fireplace and patio. 2nd level has a full L.R., dining area, mod. kitchen, 3rd level has 2 master bedrooms, total of 2 1/2 baths, central air conditioning. Asking only \$172,900.

Find out how much your home is worth ...
call today for a free market analysis!

Century 21 WAYNE K. THOMAS REALTORS



BLOOMFIELD

EYE APPEAL, HEART APPEAL

3 BR Colonial, large LR, DR, fin basement. Possible Mother/Daughter. \$189,900. Eves. call Helen 743-0524.

277 Broad Street Bloomfield, New Jersey
(201) 429-7400

"Each office independently owned and operated"
MEMBER OF BLOOMFIELD, GLEN RIDGE,
NUTLEY, BELLEVILLE BOARD OF REALTORS

We have the Home For You



Govel Realtors handles Fairway View condos

Govel Realtors has negotiated the sale of the Belleville Garden Apartments and the Jorammon Garden Apartments in Belleville, on behalf of one of the organization's investment clients.

According to William W. Govel, president of the Belleville-based full-service real estate organization, the investment client is considering converting the two garden apartment complexes, totalling 92 units, to condominium ownership. The name of the new joint complex will be Fairway View.

"The purchase of these apartments represents a tremendous opportunity to provide much-needed affordable housing in the Belleville area," Govel said in disclosing the sale. "Our client is committed to satisfying the needs of the community while providing existing tenants with special consideration."

The multi-million dollar, all-cash sale of the two adjoining apartment complexes was negotiated by Nicholas Gisondi, director of marketing for Govel Realtors.

Pending presentation and approval of a conversion plan, Govel said pricing for the Fairway View units would probably start under \$100,000 — placing them well within the financial grasp of the area's homebuyers.

Govel Realtors, which specializes in condominium and coopera-

tive apartment conversions, sales and management, has been a forerunner in providing affordable luxury condominiums to the Belleville community, as well as throughout Northern and Central New Jersey.

Fairway View, which consists of a mixture of one- and two-bedroom and studio units, offers a number of outstanding features, including many units with natural hardwood floors and ideal location within close proximity to Manhattan, the Meadowlands, and highways leading to all major points.

"Fairway View also offers a rare opportunity for existing tenants to purchase their residences, when the conversion plan is approved, at special insider pricing," Govel said.

"And all efforts will be expended to accommodate opportunity here, as well, for first-time buyers who are finding themselves priced out of the residential real estate market in other areas."

Govel Realtors is expected to announce plans shortly regarding its client's plans for condominium conversion at Fairway View. In the meantime, inquiries are being accepted at the real estate organization's main offices at 727 Jorammon Street in Belleville.

ADULT COMMUNITY Holiday City at Berkeley



SARASOTA: Model - 2 bedroom, 1 bath, W/W carpeting, washer/dryer/refrigerator - corner property, nicely landscaped - well, pump & sprinkler - \$89,900.



YELLOWSTONE: Model - 2 bedroom, 1 bath, w/w carpeting, washer/dryer - well/pump/sprinkler system, central air. - \$95,000.

Holiday City Realty, Inc.

33 Wrangle Brook Rd.
Toms River, NJ 08753
Licensed Real Estate Broker

Toni Kohl

Call collect: 240-1620

Attention Realtors!

This special section was created for you and contains editorial copy submitted by you, geared to your local market. An interesting and appealing section that our readers look forward to each week and keep as a handy reference guide. This section is the perfect advertising vehicle for you, the realtors.

If you believe that the only place to publish your listings is in the larger circulation dailies, or your town paper only, you're missing out on a market that is right at your fingertips... When a family is looking to purchase a home, they are willing to move outside of their town — if the price is right and the location near enough to meet their needs.

We all know that...

visibility opens the door to sales.

What better way to be visible than to publish your weekly listing right here in this special realtor's page, where it will be seen by a select readership with one of the highest degrees of purchasing power and discretionary income in Essex County...

The readers of...

The Nutley Sun Belleville Times Bloomfield Life

RATES

One low flat rate for three papers.

1 to 3 insertions \$12.60 per column inch

4 or more insertions \$10.64 per column inch

Minimum Size... 2 columns x 3 inches

Deadline for Editorial copy... Friday, 12 noon

DON'T MISS OUT — SPACE IS LIMITED

CALL NOW!

667-2100

Orechio Publications & TV

800 Bloomfield Avenue Nutley, New Jersey 07110

THE NUTLEY SUN
BELLEVILLE TIMES
BLOOMFIELD LIFE

Classified

YOUR ADS ARE SURE TO GET RESULTS!

667-3000

Mon. thru Fri. 9:00 AM to 5:00 PM
Deadline — Tues. 12:00 Noon

CLASSIFIED INDEX

CHECK YOUR AD THE FIRST DAY OF PUBLICATION. The Nutley Sun, The Belleville Times and The Bloomfield Life are responsible only for MAJOR errors in the first day's insertion.

CREDITS Credits and adjustments are to be made only for errors which significantly alter the effectiveness of the ad, such as a wrong telephone or price. Credits will not be issued for typographical errors or misspelled words. The newspaper is not responsible for MAJOR errors in the first day's publication.

All Classified Line Ads Appear in All Three Papers:

The Nutley Sun, The Belleville Times, The Bloomfield Life

And Will Appear On **abc TV36** Channel 36/38

During "The Community Bulletin Board" Time Frame

01 WHEELS

05 Auto Sales
06 Auto Insurance
07 Antique Car Sales
08 Autos Wanted
11 Campers/Trailers
13 Financing
17 Mobile Homes/Offices
19 Motorcycles/Bikes/Scooters
21 Parts, Accessories, Services
23 Rentals
24 Auto Wreckers

025 ANNOUNCEMENTS

2585 Bids & Auctions
2587 Business Notices
2588 Entertainment
2589 General Notices
2590 Lost & Found
2591 Personal Notices
2592 Professional Notices
2593 Public Notices

027 CHILD CARE

2785 Baby Sitter
2786 Nursery Schools
2787 Pre-School

029 DIAL-A-SERVICE

29A2 Accounting/Taxes
29A3 Air Conditioning
29A4 Alarms
29A5 Ambulance Service
29A6 Appliance Repair
29A7 Auto Repair

031 EMPLOYMENT

3105 Clerical
3106 Domestic
3107 Executive/Administrative
3108 Employment Wanted
3109 General Opportunities
3110 Industrial
3111 Part-Time Help
3112 Professional
3113 Restaurants/Club/Hotels
3114 Sales
3115 Trades/Technical

033 FINANCIAL

3385 Business Opportunities
3387 Business Wanted
3388 Insurance
3389 Loans
3390 Partnerships/Dealerships
3391 Franchise
3392 Stocks & Bonds
3393 Tax

035 INSTRUCTION

35A5 Arts & Crafts
35A6 Computer
35A7 Language
35A8 Misc. Instruction
35A9 Music/Dance
35B0 Photography
35B1 Schools
35B2 Tutoring
35B3 Vocational Training

037 MERCHANDISE

37A5 Antiques
37A7 Appliances
37A9 Articles for Rent
37A10 Articles for Sale
37A11 Articles Wanted
37B0 Bicycles
37B1 Building Material
37B2 Cameras
37B3 Coin/Stamp
37B4 Commercial Equipment
37B5 Crafts
37B6 Flea Markets

039 PETS & LIVESTOCK

39F5 Free Pets
39L5 Livestock & Supplies
39L7 Livestock Wanted
39P5 Pet Announcements
39P7 Pets & Supplies
39P9 Pets Wanted

041 REAL ESTATE

41C5 Condominiums for Sale
41F5 Farms & Acreage
41H5 Houses for Sale
41I5 Industrial & Commercial
41J5 Investment/Income
41K5 Property Management
41L5 Real Estate Wanted
41M5 Realtors/Brokers
41N5 Residential & Commercial
41O5 Townhouses for Sale

043 RENTALS

43A5 Apartments/Furnished
43A7 Apartments/Unfurnished
43A8 Condos for Rent
43C5 Commercial/Business
43D5 Properties Wanted
43E5 Corn/Bus. Rentals
43G5 Garage for Rent
43H5 Houses/Guest Houses
43I5 Houses/Furnished
43J5 Houses/Unfurnished
43K5 Office Rentals
43L5 Rentals to Share
43M5 Resid. Rentals Wanted
43N5 Rooms
43O5 Short-Term Rentals
43P5 Storage/Warehouse
43Q5 Trailer Rentals
43R5 Vacation Rentals

045 AUTO SALES

1982 Mercury Capri
4 cyl, 4 spd, 46K mls.
A/C, P/S, P/B. Sunroof & more. \$3995 or B/O. 748-2928

047 FORD FAIRMOUNT

4 dr, blue, newly painted, terrific mechanical cond. w/many new parts. P/S, P/B, auto. Asking \$1,500. Call 667-0458/857-3310.

049 INCREDIBLE INFORMATION

"Jeeps" Cars
4x4's seized in drug raids for under \$1007! Call for facts today! 1 (615) 289-6701 Ext 720 Fee for directory.

051 CHRYSLER LE BARON CONVERTIBLE

Loaded. 11,000 miles. Excellent condition. Asking \$12,500. Call Joe 762-8286.

053 AUTO INSURANCE

45A5 Auto Insurance
45B5 Insurance
45C5 Insurance
45D5 Insurance
45E5 Insurance
45F5 Insurance
45G5 Insurance
45H5 Insurance
45I5 Insurance
45J5 Insurance
45K5 Insurance
45L5 Insurance
45M5 Insurance
45N5 Insurance
45O5 Insurance
45P5 Insurance
45Q5 Insurance
45R5 Insurance
45S5 Insurance
45T5 Insurance
45U5 Insurance
45V5 Insurance
45W5 Insurance
45X5 Insurance
45Y5 Insurance
45Z5 Insurance

055 INCOME TAX

55A5 Income Tax
55B5 Income Tax
55C5 Income Tax
55D5 Income Tax
55E5 Income Tax
55F5 Income Tax
55G5 Income Tax
55H5 Income Tax
55I5 Income Tax
55J5 Income Tax
55K5 Income Tax
55L5 Income Tax
55M5 Income Tax
55N5 Income Tax
55O5 Income Tax
55P5 Income Tax
55Q5 Income Tax
55R5 Income Tax
55S5 Income Tax
55T5 Income Tax
55U5 Income Tax
55V5 Income Tax
55W5 Income Tax
55X5 Income Tax
55Y5 Income Tax
55Z5 Income Tax

057 DELSON ASSOCIATES

AUTO INSURANCE CENTER — CHECK OUR RATES —
Immediate Coverage Minimum Down Payment
Mon-Friday, 10 a.m.-5 p.m. — 7 p.m.-8:30 p.m.
Saturday 10 a.m.-3 p.m.
15 BLOOMFIELD AVE. BLOOMFIELD (6-21-87)

059 ATTENTION! AUTO PARTS

WILL PAY CASH FOR ANY JUNK CAR IN ANY CONDITION
Highest prices paid for late models. (6-21-87)
USED CARS & TRUCKS
USED PARTS
991-4246 or 991-0081
54 Stover Ave., Kearny
USED PARTS

21 PARTS, SERVICES ACCESSORIES

JUNK CARS WANTED
Free Tow Away
Same Day Pick-Up
S.O.S. TOWING, Inc.
429-8471 Bloomfield
481-2610 Newark (6-25-87)

FRANKIE'S TOWING

24 Hour Service
Junks Wanted!
Cars, Trucks, etc.
Highest Prices Paid
Call 667-2192 or 344-9492 (12-24-87)

MODERN AUTO PARTS

Open 7 Days
8:30-5:30 Weekdays
9:00-1:00 Sunday
• PARTS • PAINTS • MACHINE SHOP
Mechanic on Duty 6 Days
DISCOUNT PRICES
82 Rutgers Street
Belleville (12-24-87)
759-5553

2565 GENERAL NOTICES

A WONDERFUL FAMILY EXPERIENCE.
AUSTRALIAN, EUROPEAN, SCANDINAVIAN
HIGH SCHOOL EXCHANGE STUDENTS
ARRIVING IN AUGUST.
BECOME A HOST FAMILY FOR AMERICAN INTERCULTURAL STUDENT EXCHANGE. CALL 1-800-SIBLING.

25P5 PERSONAL NOTICES

TROUBLE TEEN? Want a non-professional to listen? Call 667-5473.

DIVORCE MEDIATION

Parting as friends, an alternative to fighting it out in court. Therapist works with couples who want to negotiate and agree. Call 1-201-360-9723.

TRAVEL VENTURES LTD

Trip to Acapulco, May 17-24. 8 glorious days incl. transp., air fare, breakfast, HOTEL CONDESA DEL MAR. All for \$459 per person. Call 759-4804. First come, first served.

21 PARTS, SERVICES ACCESSORIES

FREE TOWING & ROAD TESTS
Kirk's AUTOMATIC TRANSMISSIONS INC.
STANDARD & AUTOMATIC 4 WHEEL DRIVE TRUCKS & CARS (12-24-87)
FREE ESTIMATES 998-9666
(Across from North Arlington Diner)
20 RIVER ROAD, NORTH ARLINGTON

27N5 NURSERY SCHOOLS

LOOKING GLASS CHILDREN'S CENTER
16 Bellevue Avenue
Bloomfield
Located next to Brookdale Park

27N5 NURSERY SCHOOLS

* Ages 3 months to 6 years
* Full Day Care & Kindergarten.
REGISTER NOW FOR SUMMER CAMP PROGRAM AGES 4-10
* Breakfast, lunch, snacks provided.
* State Licensed 338-0284
Mrs. Darke - Director (4-87)

27N5 NURSERY SCHOOLS

Sandy Lane Nursery School
"A Child's World Where Playing Is Learning"
834 Mill Street
Belleville
751-6380
Days and hours to meet your needs
Call or come in to register
School open to visitors
Development Programs in
• Arts • Music • Skills
• Language • Social Development
Continuous day care programs for working mothers.
Nutritionally balanced lunch.
State Licensed Certified School & Teachers
ACCEPTING FALL REGISTRATIONS NOW
Dedicated to a program of Early Childhood Education (6-25-87)

The Magic Cottage Nursery School

A Place Where Learning is Fun
State Certified School and Teachers. Balanced Lunch. Year round half- or all-day sessions.
• Arts and Crafts • Science • Music
• All Day Kindergarten registration accepted now
759-8758 (12-24-87)
393 Washington Ave.
Belleville (cor. Essex St.)

31E5 EXECUTIVE/ADMINISTRATIVE

SECRETARY
NURSING
RESOURCE
DEPARTMENT
PART TIME

Enjoy the advantages and career satisfactions that come from working in a dynamic and highly professional environment right here at ST. MICHAEL'S.

Our fast-paced Nursing Resource Department requires a highly motivated, self-starter who can perform diverse secretarial duties including typing, filing, answering telephone, etc. Prior secretarial experience and excellent interpersonal skills a must. Knowledge of nursing and/or medical terminology a plus.

We are conveniently located to/from major highways.

To arrange an interview please call Maryellen Kelly, Nursing Recruiter.

(201) 877-5454

saint michael's medical center
equal opportunity employer m/f

LEGAL SECRETARY
Full time/part time. Must have defense litigation experience. Contact Mrs. Dee 429-7091.

4/16

Secretary for Nutley Ins. office. Duties include tele skills, typing, claim reporting & personal lines rating. Excl. bnfts. Exp. preferred. 235-1562 ask for Sandy.

31E7 EMPLOYMENT WANTED

Woman available for housecleaning. Experienced. Call Ellen 667-2263

LOOKING FOR A PART TIME JOB AS CHURCH SECRETARY IN THE BLOOMFIELD AREA. CALL 429-9374.

31C5 CLERICAL

CLERK TYPIST

Attractive opening offering interesting diversified duties. 1-2 years exp. Good with figures. 35 hr week. Liberal company benefits. Call:

PERSONNEL DEPT.
(201) 997-3000
Equal Opportunity Employer M/F

PERSONNEL CLERK
Min 2-4 years exp. Duties incl record keeping, recruiting, administer medical & dental program, heavy phone work. Knowledge of word processing. Liberal company benefits.

Submit resume with salary desired to:

BOX 524
Kearny, N.J. 07032
Equal Opportunity Employer M/F

31G5 GENERAL OPPORTUNITIES

FACTORY WORKERS
Duties incl servicing departments, lifting materials and general floor work

Personnel Dept. 997-3000
GOODY PRODUCTS
969 NEWARK TURNPIKE
KEARNY, N.J. 07032
equal opportunity employer M/F

Tool & Die Maker

All around exp. Build & repair automatic machines, progressive dies, etc. Steady employment, excellent benefits. Call, write or apply.

Personnel Dept. 997-3000
GOODY PRODUCTS
969 NEWARK TURNPIKE
KEARNY, N.J. 07032
equal opportunity employer M/F

SUPERVISOR-NIGHTS
Working supervisor to take charge of Plating Dept. Barrel, still plating, furnishing of small parts. Also Production Supervisor with 3-5 years exp in machine & hand assembly operation which incl carding & quality control of finished items. Liberal company benefits.

Submit resume with salary desired to:

BOX 524
Kearny, N.J. 07032
Equal Opportunity Employer M/F

WAREHOUSE
ASSISTANT TO SUPERVISOR
Leading manufacturer of consumer goods has opening for individual with 3-5 years experience in all phases of shipping/receiving. Ability to direct employees in union environment. Benefits package includes:
BLUE CROSS
MAJOR MEDICAL
DENTAL, LIFE INSURANCE
Submit resume with salary desired to
BOX 524, KEARNY, N.J. 07032
equal opportunity employer M/F

DATA ENTRY OPERATOR

2-4 years experience IBM Series I or related data entry systems. Liberal company benefits. Good starting salary. Also part time nights.

Call **PERSONNEL DEPT.**
997-3000
Equal opportunity employer M/F

31G5 GENERAL OPPORTUNITIES

DRIVERS- needed to deliver vans in the Tri-State area. Must be over 21 with a valid N.J. drivers lic. Apply in person: National Traveler, 201 E. Grove St. Bloomfield (entrance on Watsessing Ave.)

SUPERINTENDENT ASSISTANT- Exp painter able to do minor repairs. Large apt complex Nutley 8-4:30 PM. Apply in person: The Commons, Rental Office, 1 River Rd. Nutley.

KEYPUNCH
2nd shift avail for experienced operators. Full time, part time. Paid holidays & bnfts. Good starting salary. Call for appointment, Denis Hart, 891-3000

TRUCK DRIVERS-5 spd. \$6.75 an hr. to start & Co. pd. bnfts. 991-8244 ask for Larry or apply in person Koch Carbonic, 43 Raymond Blvd., Newark, N.J. 07105

TRUCK MECHANIC
Immediate opening for assistant truck mechanic. Applicant must have min. 3 yrs exp on gas & diesel. Familiarity with hydraulic cylinders. Must have own tools & clean N.J. drivers lic. Excl. Co. paid bnfts. Call Port-O-San Corp., 997-3900. B.O.E. M/F

HELP WANTED ALL SHIFTS AVAIL. APPLY IN PERSON. BURGER KING, 88 Franklin Ave. Nutley

Excellent income taking short phone messages at home. For info, call 504-649-7922 Ext. 837A.

DENTAL ASSISTANT
For modern specialty Nutley office. No evening hours. Light typing required. Pension, Blue Cross, Blue Shield, Benefits. If you are alert & aggressive we will train you completely. Call for an interview & begin a new career. 661-1020.

NEED CALL TIME
Day/night needed by firm seeking Apply in person & Co. Ave. Chimes (Office) Rosemarie 991-1010

SKIN CARE
NUTLEY is looking for nail technician. Immediately Call 405 or 661-1010

BE OUR NEXT DOOR
Elite Model Girl/Guy. Live Mall Sat April 12 2PM. John C. W. Orange 751-1010

COUNTER PERSON
Monday-Friday, fast with figures. 6P.M. 751-5710

FACIALIST P/T
in new mod. Nutley Call 759-9790



Airline

Exciting AIRLINE opportunities within your reach!

Continental Airlines, New York area's largest airlines is seeking **TICKET/GATE AGENTS AND BAGGAGE HANDLERS/ RAMP OPERATIONS** for our Newark International Airport facilities.

Ticket / Gate Agents

No Experience Necessary

We offer a complete benefits package including profit sharing, plus unique travel privileges.

- Applicants should have:
- Availability to work a full time rotating schedule
 - Well groomed, professional appearance
 - Minimum typing ability
 - Previous public contact work helpful

Please apply in person
Sat., April 4 at 10 AM or Tues., April 7 at 6 PM
CONTINENTAL AIRLINES,
INTERNATIONAL PLAZA BUILDING
Routes 1&9 South (local), Newark NJ
(100 yards before Howard Johnson's)

Baggage Handlers/ Ramp Operations

No Experience Necessary

We offer a complete benefits package including profit sharing, plus unique travel privileges.

- Applicants should have:
- Availability to work a full time rotating schedule
 - Valid NY/NJ drivers license required
 - Willingness to work outdoors in a physically demanding and fast paced environment

Please apply in person
Thurs., April 2 at 6 PM, Sat., April 4 at 2 PM
or Mon., April 6 at 6 PM
CONTINENTAL AIRLINES,
INTERNATIONAL PLAZA BUILDING
Routes 1&9 South (local), Newark NJ
(100 yards before Howard Johnson's)



CONTINENTAL AIRLINES
An Equal Opportunity Employer

ADP
An equal opportunity employer

ALL PHASE EMPLOYMENT SERVICE
382 Franklin Ave.
Nutley, N.J.
661-W-O-R-K
997-W-O-R-K
Permanent & Temporary
F/T and P/T positions
Vacation Plan, Bonus
Plans
Register Immediately 6-25-80

DRIVER WANTED
Sell ice cream, Belleville route. Must be dependable & good with kids. Great pay. Starts April. Call 748-6898.

SERVICE/DELIVERY MAN- to work soda dispensing equipment & make deliveries. Must drive, mechanically minded person preferred. We will train. \$7.00 an hr to start plus Co. paid bnfts. Call Larry 991-6200 or apply at Koch Carbonic, 433 Raymond Blvd. Newark.

Driver
With good driving record, knowledge of North N.J. area for local delivery. 481-1050 August.

BARMAIDS/BARTENDERS, WAITRESSES, WAITERS, BROILMAN & kitchen help. Apply in person. 400 Centre St. Nutley.

Experienced estimator needed for all floor coverings. Knowledge of wall coverings helpful but not nec. 661-0156

BEAUTICIAN- Experience & following necessary. Great opportunity for the right person. Call now 667-3634.

TELE SALES \$10-\$12 HR
Sal. + Comm.
6-9:30 Mon-Thurs
Bloomfield Center
743-2777

CLERK TYPIST-Part time for Real Estate office. Mature person preferred. Marashlian 743-0117

PART TIME, 1 day a week preferred. (Thurs) Experienced office cleaner for: **Major Club of America** Belleville Branch Office 475 Washington Ave. Belleville 751-2050

P/T Stock Person. 5 days a week. 748-4523.

PART TIME NEED EXTRA INCOME TO SUPPLEMENT YOUR PRESENT EARNINGS. FLEXIBLE HRS. 835-7188

PART TIME CLERICAL 4-5 hours daily. Diversified position in our Accounting Dept. Typing a plus. Call Liz 450-6623.

DENTAL ASSISTANT with front desk exp for busy ortho office, health bnfts. Sal commensurate with exp. Full time to start immed. 667-6850.

31P6 PROFESSIONAL

RN'S HEMOPHILIA TREATMENT NURSES
Monday-Friday 9AM-6PM

Rewarding professional growth opportunities available in our progressive Hemophilia Clinic. You will be exposed to the challenge of caring for these clients with emphasis in the areas of:

- Family centered care and education
- Assessment and intervention

Requirements include: BSN and 2 years Med/Surg experience. I.V. certification a plus.

We are conveniently located and our salary is one of the highest in the state of New Jersey.

Please Call: Maryellen Kelly, Nursing Recruiter (201) 877-5454

saint michael's medical center
equal opportunity employer m/f

For supplemental Classified see . . .

OBC TV Channel 36!

GET THE ATTENTION YOU DESERVE!

SALES HELP WANTED
For home clothing shows to be done in your own home area - earn percentage of sale, make your own hrs. Call for interview between 1 & 4pm. 473-4190

DEGREE ACCOUNTANT
Do your tax with computer, fast, accurate, reasonable prices. Call Fred 743-4451

SALESPERSON
High fashion womens apparel shop in Montclair area. Good salary for the right person. 746-3946.

SALES PERSON
Full/Part Time, pleasant co-workers, excl environment. Fine bnfts, plus perks, superior merchandise. Call Personnel 867-1900 for appointment & interview.

REAL ESTATE

Salesperson and Brokers. License classes are now forming. **AMERICAN SCHOOL OF REAL ESTATE** 571 Bloomfield Ave. Verona
For information call 239-1216 or 239-1244

NOW INTERVIEWING!

Here's a valuable opportunity for you to join one of the nation's fastest growing real estate companies!

Schlott Realtors offers the industry's finest training program, a complete package of client services, a referral network of 150 Schlott offices in five states and a revolutionary Recognition Program for the Achiever, where top producers can earn 60-70...even 75% of the total gross commission.

Call Leo Schneider, Manager of our new Montclair office, for a confidential interview at 783-5100.

SCHLOTT REALTORS
70 PARK STREET
MONTCLAIR
201-783-5100

1000 SUNBEDS
SUNAL - WOLFF - SAVE 50% Call for FREE Color Catalogue & Wholesale Prices. Commercial & Residential Units. M/C or VISA Accepted. Call 1-800-228-6292

25E6 ENTERTAINMENT

MARY'S THEATER PARTIES
Apr. 9-"Starlight Express"
Apr. 11 & 29-"Les Miserables"
Apr. 25-"Reading, Pa. shopping tour"
May 3-"Spirit of N.Y."-Brunch & cruise.
May 7-"La Cage Aux Folles"
Sept. 20 to Oct. 6-"Hawaii Cruise"
Above incl. orchestra seat, dinner, trans, tax & tip for dinner.

998-1268

37M5 MUSICAL INSTRUMENTS

PIANO & ORGAN WAREHOUSE SHOWROOM
for the largest Piano and Organ Dealer on the East Coast

New, Used Floor Models, Demo's
15 NATIONALLY FAMOUS BRANDS
Over 300 Catalogued Instruments

Guaranteed Lowest Prices
Used Pianos and Organs from \$498!

\$99

Rental Purchase Plan Available
Call, or see Ed Borgia

744-1200

Baldwin - Hammond
Pianos Music Center Organs

Div. of Altenburg Piano House, Inc.
507 BLOOMFIELD AVENUE, MONTCLAIR

41H5
HOUSES FOR SALE

**BLOOMFIELD
GREAT MOTHER/
DAUGHTER**
Newly renovated 2 family near stores & transp. Apartments have living room (fireplace), dining room, eat-in-kitchen, den, 2 bedrooms & bath. 2 rooms & bath on 3rd avail. for 2nd floor apartment. \$190,000. MTC 049-624.

**BLOOMFIELD
IS ADDITIONAL
INCOME IMPORTANT
TO YOU?**
Then call now to arrange previewing of this 17 year old 2 family. Homes like this sell fast. All separate utilities. Walk to New York City train & bus so call now. \$269,900. MTC 049-624.

**NORTH NEWARK
ENDEARING**
This brick home features a large living room, with fireplace, dining room, new eat-in-kitchen, large bedrooms, close to New York City transp. Call now! \$300,000. MTC 049-671.

**FIREPLACE THAT
SAYS-RELAX**
Newly expanded Ranch peaceful area of 1/2 acre. Delightful, warm living room with fireplace that invites enjoyment. Shown by appointment only. \$200,000. MTC 049-616.

**COMPY COZY-
CHARMER**
New right in large school kitchen, living room, dining room, 2 bedrooms, 1 bathroom, 1/2 acre deep back yard, garage. Quick occupancy. Don't last! Quiet, neat neighborhood. Shop at corner deli. \$167,500. MTC 049-534.

MUST SEE 2-FAMILY
Quality location on quiet cul-de-sac. \$200,000 income potential. 4 over 6. Each apartment has huge entertainment area. Fully updated with new kitchen, roof, siding, patio with gas barbecue, etc. Walk to New York City transp. good schools. shop. \$234,900. MTC 049-640.

3 HUGE BEDROOMS
Lovely home & garden, quality location & schools. Adjacent to public land. Knotty pine family room & Florida room, garage & a heck of a lot more. The market is hot! Hurry! \$239,000. MTC 049-663.

**PROFITABLE
INVESTMENT**
In prestigious location, well maintained 3 family plus deli store. \$230,000 income with much greater potential. Huge basement, many new features. \$269,900. MTC 049-926.

**WEICHERT
REALTORS**
201-746-1515
Equal Opportunity Housing

**LIVINGSTON-BY
OWNER-Immac 3 bdrm**
Ranch in desirable Cherry Hill. New carpeting, windows & bath. Newly painted inside & out. Walk to N.Y. Newark buses & houses of worship. \$204,900. Call days 442-2525, evenings/week-ends 992-2075.

**BELLEVILLE FOR
SALE BY OWNER- 6**
rms, 3 BR's colonial, screened porch, conv. to schools. Principals only. \$154,900. Call 759-7493.

GOVERNMENT HOMES
from \$1 (1 repair). Delinquent tax property. Repossessions. Call 1-800-687-6000 Ext. GH 7100 for current repo list.

**BLOOMFIELD-BY
OWNER- 2 family St.**
Valentine dead end St. All new 1st flr, many extras. Asking \$197,500. 429-9786.

**BELLEVILLE:
COLONIAL. All brick.**
Move-in-cond. Extra lg rms, 4 bdrms, liv rm, din rm, family rm with flr, new kit, fin bsmt, att garage, patio & pool. Many extras. Easy commute to N.Y.C. Asking \$209,900. Call 751-1518.

Charming Colonial
On private cul-de-sac double lot. 5 bdrms, 2 baths, L/R w/frpl, family room w/frpl, lg country kitchen, 2 car attached garage. Slate roof. By owner 667-6112. \$395,000. Principals only.

BLOOMFIELD-4 large
rms, H/W supplied, refrig, stove, \$565. Call 743-3805.

PRICED RIGHT - This
mint condition Beach Haven West lagoon home won't last long. Completely remodeled with new roof and insulation. This 3 bedroom rancher also features a wood stove, gas heat, boat dock and more. Being sold furnished this home is available at just \$137,900.00. CALL CASTLE REALTY AT 1-(800) 562-7631 or 1-(609) 597-5200.

**For supplemental
Classified
see...**
**OBC TV
Channel
36!**

41R5 REAL ESTATE
WANTED

**SEEKING A ONE FAMI-
LY HOME ON AN
OVERSIZED LOT, 3-5
BR'S IN NUTLEY.
PRINCIPALS ONLY.
P.O. BOX 597
NUTLEY**
-6/18/87

43A5 APARTMENTS
FURNISHED

BELLEVILLE
Furn studio with full bath, private entrance. Refrig & stove incl. Washer privileges. Mature woman pref. \$400 all util incl.
MONTELL AGENCY
759-6900

3 rm furnished 3rd fl.
h&w incl. Avail April 1.
\$385 mo.
METRO AGENCY
REALTOR 751-3400

43A7 APARTMENTS
UNFURNISHED

2-3 rm Garden Apts.
H&W & gas incl. \$600 mo.

4 rm Apt. H&W & gas
incl. \$700. Month 1/2 sec.
Call 987-3206. By appointment only.

NUTLEY-5 rms, 2nd fl.
Laundry in bsmt, park 1 car. New kit, attic storage, child O.K. No pets. \$675 + heat & util. Avail. immed.
REALTOR:
RECORDS REALTY
667-5500

Belleville
Studio Garden Apt. h&w & gas incl. \$421 mo.

3 1/2 rm mod Garden Apt.
h&w & gas incl. \$589 mo.

5 mod rms, 3rd fl. Supply
own utils. \$500 mo.

5 lg rm 2nd fl. Supply own
utilities. Washington Ave loc. Children O.K. \$400.

5 mod rm 2nd fl. h&w
incl. Naples Ave loc. \$700 mo.

Bloomfield
6 mod rm 2nd fl. Supply own utilities. Off Broughton Ave. \$725 mo.

Lyndhurst-6 mod rm 2nd
fl. h&w incl. 2 full baths, laundry hook-up. \$700.

BELLEVILLE-3 1/2 rms,
with A/C, rugs, private entrance, convenient to buses, business center preferred. Avail 4/15/87. \$350, plus utils. 759-8341.

**AVAILABLE
IMMEDIATELY**
BELLEVILLE
3 1/2 rm garden. \$550 incl heat & hot water.
NUTLEY
4 rm rms, \$575 all util incl.
4 1/2 rms, \$560 incl heat & hot water.

**CARL A. ORECHIO
AGENCY**
667-7733
Eves: Mario 667-8189

BELLEVILLE
NO AGENCY FEE
1 bdrm apt. 1st floor of 2 family home. Absentee landlord. Stove, refrig & heat incl. \$450.
Ask for Sal 751-2301

**FOREST HILL
AREA
(Newark)
Studios.**
1 BR's, 2 BR's
We are now accepting applications in luxury apts for modern 16 story apt buildings located in beautiful Forest Hill section of Nwk. Rent control well maintained spectacular views, off St. assigned pkg. Laundry facilities on premises. C/A, w/all utils included in rent. Convenient bus transportation to mid town NYC. Approx. 10 mins to Holland Tunnel. Call Leona Russomanno at area 201-482-5556 or Eleanor Pucarello at 201-483-1616 hrs 8:30 to 4:30.

BLOOMFIELD
Deluxe garden. Lg liv rm, mod kit with din area, lg mstr bdrm, tile bath. Avail 5-1. \$630 incl heat, hot water, carpet & appl.

2 bdrm garden apt. 21' liv
rm with sliders, eat-in-kit, mod bath. Avail 5-1. \$850 incl heat & hot water.

4 rm Condo. Liv rm, din
rm, mod kit & bath. Lg bdrm. Avail 5-1. \$695 incl heat & hot water.

BELLEVILLE
New Condo. 2 bdrms, dishwasher. \$795 + util. Avail immed.

GLEN RIDGE
Lg 2 bdrm apt. Liv rm, mod eat-in-kit, mod bath, parking. Vacant. \$750 + util.

TO INSPECT CALL
Arthur L. Grutt, Realtor
GLENWOOD
Real Estate Agency
429-7380
905 BROAD ST., BLOOMFIELD

**43A7 APARTMENTS
UNFURNISHED**

BELLEVILLE- 3 large
rms, 1 B/R, 3rd flr, new stove, new tile walls & floors in bathroom, freshly painted walls thru-out apt-professional couple only-close to NY transportation. 1 1/2 mos. sec. \$550, plus utils. Avail June 1st. Call 759-0757. Leave mess.

NUTLEY
Avail Apr. 15. 5 1/2 mod rms, frpl, dishwasher, off street parking. No pets. \$800 incl h&w/w. Marie Evans.
HANCOX REALTY
667-9115

BELLEVILLE: 3 1/2 & 4 1/2
large ultra mod rooms with w/w carpeting. Heat & hot water supplied. Laundry facilities on premises. Parking space. Call 759-8379.

NUTLEY
3 rms, \$495 h&w/w incl. 3 rms, \$525 + util.
3 rms, \$575 h&w/w incl. 4 rms, \$625 h&w/w incl. 4 rms, \$750 h&w/w incl. 4 rms, \$550 h&w/w incl. BLOOMFIELD
4 rms, \$500 h&w/w incl. 5 1/2 rms, \$575 + util. 3 rms, \$600 h&w/w incl. CLIFTON
2 rm studio-turn. \$450 all util incl. NO, NEWARK
6 rms, \$650 + util.

**COSTANTINE
REALTY**
Realtor 667-7070

MONTECLAIR-Large 4
bedroom apartment located on 3rd floor. Bloomfield Avenue. Montclair. Newly remodeled kitchen, living room, dining room. \$1025 month, heat & hot water included. CALL 744-3802. Not recommended for children.

BLOOMFIELD: 3 1/2 & 4 1/2
large ultra mod rooms with w/w carpeting, heat & hot water supplied. Laundry facilities on premises. Parking space. Adults pref. Call 743-8886.

NUTLEY-2 BR, kite,
D/R, L/R, attic, parking avail. Close to NY trans. \$725. H/W provided by landlord. Avail immed. Call R.J. Byrne & Co. 746-8804

43A7 APARTMENTS
UNFURNISHED

BELLEVILLE- 3 large
rms, 1 B/R, 3rd flr, new stove, new tile walls & floors in bathroom, freshly painted walls thru-out apt-professional couple only-close to NY transportation. 1 1/2 mos. sec. \$550, plus utils. Avail June 1st. Call 759-0757. Leave mess.

BELLEVILLE
3 1/2 rm garden. Avail 5-1. \$540 h&w/w incl. 2 1/2 rm garden. Avail immed. \$540 h&w/w incl. 5 rms, 1st fl. Adults pref. \$550 + util.

NUTLEY
3 rms, 2nd fl. 1 parking space. \$475 h&w/w incl. MONTELL AGENCY
759-6900

NUTLEY
Avail Apr. 15. 5 1/2 mod rms, frpl, dishwasher, off street parking. No pets. \$800 incl h&w/w. Marie Evans.
HANCOX REALTY
667-9115

BELLEVILLE: 3 1/2 & 4 1/2
large ultra mod rooms with w/w carpeting. Heat & hot water supplied. Laundry facilities on premises. Parking space. Call 759-8379.

NUTLEY
3 rms, \$495 h&w/w incl. 3 rms, \$525 + util.
3 rms, \$575 h&w/w incl. 4 rms, \$625 h&w/w incl. 4 rms, \$750 h&w/w incl. BLOOMFIELD
4 rms, \$500 h&w/w incl. 5 1/2 rms, \$575 + util. 3 rms, \$600 h&w/w incl. CLIFTON
2 rm studio-turn. \$450 all util incl. NO, NEWARK
6 rms, \$650 + util.

**COSTANTINE
REALTY**
Realtor 667-7070

MONTECLAIR-Large 4
bedroom apartment located on 3rd floor. Bloomfield Avenue. Montclair. Newly remodeled kitchen, living room, dining room. \$1025 month, heat & hot water included. CALL 744-3802. Not recommended for children.

BLOOMFIELD: 3 1/2 & 4 1/2
large ultra mod rooms with w/w carpeting, heat & hot water supplied. Laundry facilities on premises. Parking space. Adults pref. Call 743-8886.

NUTLEY-2 BR, kite,
D/R, L/R, attic, parking avail. Close to NY trans. \$725. H/W provided by landlord. Avail immed. Call R.J. Byrne & Co. 746-8804

**43C7 COMMERCIAL/
BUSINESS RENTALS**

WORKSHOP/store,
Washington Ave. loc. \$200 per mo. 751-9475

*** Bloomfield-867 sq ft**
space avail. Watessing work shop or storage. No food please. \$425 per mo. Avail immed. Call 746-8804. R.J. Burn & Co. Realtor

**43C4
GARAGE WANTED**

ONE CAR GARAGE
WANTED AREA OF BELL/NUTLEY, reasonable rate, needed immed. Call 667-2019 aft 6PM

**4305
OFFICE RENTALS**

**BLOOMFIELD
OFFICE SPACE**
4 new offices with central heat & A/C. 650 sq. ft. 850 sq ft & 1100 sq ft at \$10.00 per sq. ft + util. Incl w/w carp, ample parking, near all trans.

**CENTRE REALTY
OF NUTLEY
REALTOR 667-5100**

OFFICE SPACE approx
3,000 sq ft. 2nd flr. office space, A/C, heat furnished. 234 Washington Ave. Belleville 759-4220

**43R7 RESIDENTIAL
RENTALS WANTED**

**ATTENTION
LANDLORDS!**
Apartments Wanted We Screen all Prospective Tenants. No Fee To Landlord. COSTANTINE REALTY. 289 Franklin Ave. Nutley, N.J. 1334-61
Realtor 667-7070

43R9 ROOMS

**NUTLEY
FURNISHED
ROOMS
IN RESTORED
VICTORIAN
HOUSE**
\$65-\$85 PER WEEK.
GARDEN STATE INVESTMENTS
661-0156

**43R7 RESIDENTIAL
RENTALS WANTED**

APARTMENTS WANTED!
ATTENTION LANDLORDS!
We have many qualified tenants that are screened and waiting for apartments or homes. You can choose that special tenant at no cost to you. For information call Tony Grande

MARZULLI REALTORS
264 Belleville Ave., Bloomfield, N.J. 1334-67
743-2306

**43A7 APARTMENTS
UNFURNISHED**

BLOOMFIELD
Deluxe garden. Lg liv rm, mod kit with din area, lg mstr bdrm, tile bath. Avail 5-1. \$630 incl heat, hot water, carpet & appl.

2 bdrm garden apt. 21' liv
rm with sliders, eat-in-kit, mod bath. Avail 5-1. \$850 incl heat & hot water.

4 rm Condo. Liv rm, din
rm, mod kit & bath. Lg bdrm. Avail 5-1. \$695 incl heat & hot water.

BELLEVILLE
New Condo. 2 bdrms, dishwasher. \$795 + util. Avail immed.

GLEN RIDGE
Lg 2 bdrm apt. Liv rm, mod eat-in-kit, mod bath, parking. Vacant. \$750 + util.

TO INSPECT CALL
Arthur L. Grutt, Realtor
GLENWOOD
Real Estate Agency
429-7380
905 BROAD ST., BLOOMFIELD

**43A7 APARTMENTS
UNFURNISHED**

BELLEVILLE- 3 large
rms, 1 B/R, 3rd flr, new stove, new tile walls & floors in bathroom, freshly painted walls thru-out apt-professional couple only-close to NY transportation. 1 1/2 mos. sec. \$550, plus utils. Avail June 1st. Call 759-0757. Leave mess.

NUTLEY
Avail Apr. 15. 5 1/2 mod rms, frpl, dishwasher, off street parking. No pets. \$800 incl h&w/w. Marie Evans.
HANCOX REALTY
667-9115

BELLEVILLE: 3 1/2 & 4 1/2
large ultra mod rooms with w/w carpeting. Heat & hot water supplied. Laundry facilities on premises. Parking space. Call 759-8379.

43V5
VACATION RENTALS

**LONG BEACH ISLAND-
Summer Rental Head-
quarters Inlet (Barnegat
Light) to Inlet (Beach
Haven). Choice selection
NOW available. Season,
month or week. Call
Lackey Realty, Inc. 1-
(609) 494-4511, 1-(609) 494-
8500 or 1-(609) 499-7000.**

**LONG BEACH ISLAND-
Specializing in North
Beach Harvey Cedars,
Loveladies and Barnegat
Light. Summer Rentals
from the Modest To The
Magnificent. Hill As-
sociates, Realtors 1-609-
494-2300**

PERK'S REALTY now
has a wide selection of rental properties for your 1987 vacation. For more information and rates call MANAHAWKIN 1-(609) 597-5600. SURF CITY, 1-(609) 494-8280. BRANT BEACH 1-(609) 494-3800. HARVEY CEDARS 1-(609) 494-1130.

FAMILY VACATION On
The Jersey Shore. No matter what sensation you seek, you'll find it on Long Beach Island and southern Ocean County. Call the Southern Ocean County Chamber of Commerce 1-(609) 494-7211 for a complete vacation package.

SUMMER VACATION?
Weekly, Bi-Weekly, Monthly or Summer Season for YOUR Family Vacation on Long Beach Island. Call MANCINI REAL ESTATE-Beach Haven Park 1-(609) 492-2256. Beach Haven 1-(609) 492-7371, Surf City 1-(609) 494-3773.

**NICE SUMMER REN-
TALS - Several one week
openings, July and
August. Also
Oceanfronts, Terrace
Agency, Inc. Call Toll
Free 1-800-222-0131 or 1-
609-492-9421.**

**LONG BEACH ISLAND
SUMMER RENTALS**
still available! Prime Weeks, Oceanfronts and others, all price ranges. Call for more information The Van Dyk Group Realtor, 1-609-492-1511.

**Are you looking for a
Vacation Home at the
Jersey Shore or
anywhere in the USA?**
For No-obligation information Call Toll Free 1-800-523-2460 Extension F802

SEASIDE PK
2 B/R apt. 1 block to ocean, suite 6, AC, cable TV, parking. ideal for families.
743-4783

**43V5
VACATION RENTALS**

**LONG BEACH ISLAND-
Summer Rental Head-
quarters Inlet (Barnegat
Light) to Inlet (Beach
Haven). Choice selection
NOW available. Season,
month or week. Call
Lackey Realty, Inc. 1-
(609) 494-4511, 1-(609) 494-
8500 or 1-(609) 499-7000.**

**LONG BEACH ISLAND-
Specializing in North
Beach Harvey Cedars,
Loveladies and Barnegat
Light. Summer Rentals
from the Modest To The
Magnificent. Hill As-
sociates, Realtors 1-609-
494-2300**

PERK'S REALTY now
has a wide selection of rental properties for your 1987 vacation. For more information and rates call MANAHAWKIN 1-(609) 597-5600. SURF CITY, 1-(609) 494-8280. BRANT BEACH 1-(609) 494-3800. HARVEY CEDARS 1-(609) 494-1130.

FAMILY VACATION On
The Jersey Shore. No matter what sensation you seek, you'll find it on Long Beach Island and southern Ocean County. Call the Southern Ocean County Chamber of Commerce 1-(609) 494-7211 for a complete vacation package.

SUMMER VACATION?
Weekly, Bi-Weekly, Monthly or Summer Season for YOUR Family Vacation on Long Beach Island. Call MANCINI REAL ESTATE-Beach Haven Park 1-(609) 492-2256. Beach Haven 1-(609) 492-7371, Surf City 1-(609) 494-3773.

**NICE SUMMER REN-
TALS - Several one week
openings, July and
August. Also
Oceanfronts, Terrace
Agency, Inc. Call Toll
Free 1-800-222-0131 or 1-
609-492-9421.**

**LONG BEACH ISLAND
SUMMER RENTALS**
still available! Prime Weeks, Oceanfronts and others, all price ranges. Call for more information The Van Dyk Group Realtor, 1-609-492-1511.

**Are you looking for a
Vacation Home at the
Jersey Shore or
anywhere in the USA?**
For No-obligation information Call Toll Free 1-800-523-2460 Extension F802

SEASIDE PK
2 B/R apt. 1 block to ocean, suite 6, AC, cable TV, parking. ideal for families.
743-4783

**43V5
VACATION RENTALS**

**LONG BEACH ISLAND-
Summer Rental Head-
quarters Inlet (Barnegat
Light) to Inlet (Beach
Haven). Choice selection
NOW available. Season,
month or week. Call
Lackey Realty, Inc. 1-
(609) 494-4511, 1-(609) 494-
8500 or 1-(609) 499-7000.**

**LONG BEACH ISLAND-
Specializing in North
Beach Harvey Cedars,
Loveladies and Barnegat
Light. Summer Rentals
from the Modest To The
Magnificent. Hill As-
sociates, Realtors 1-609-
494-2300**

PERK'S REALTY now
has a wide selection of rental properties for your 1987 vacation. For more information and rates call MANAHAWKIN 1-(609) 597-5600. SURF CITY, 1-(609) 494-8280. BRANT BEACH 1-(609) 494-3800. HARVEY CEDARS 1-(609) 494-1130.

FAMILY VACATION On
The Jersey Shore. No matter what sensation you seek, you'll find it on Long Beach Island and southern Ocean County. Call the Southern Ocean County Chamber of Commerce 1-(609) 494-7211 for a complete vacation package.

SUMMER VACATION?
Weekly, Bi-Weekly, Monthly or Summer Season for YOUR Family Vacation on Long Beach Island. Call MANCINI REAL ESTATE-Beach Haven Park 1-(609) 492-2256. Beach Haven 1-(609) 492-7371, Surf City 1-(609) 494-3773.

**NICE SUMMER REN-
TALS - Several one week
openings, July and
August. Also
Oceanfronts, Terrace
Agency, Inc. Call Toll
Free 1-800-222-0131 or 1-
609-492-9421.**

**LONG BEACH ISLAND
SUMMER RENTALS**
still available! Prime Weeks, Oceanfronts and others, all price ranges. Call for more information The Van Dyk Group Realtor, 1-609-492-1511.

**Are you looking for a
Vacation Home at the
Jersey Shore or
anywhere in the USA?**
For No-obligation information Call Toll Free 1-800-523-2460 Extension F802

SEASIDE PK
2 B/R apt. 1 block to ocean, suite 6, AC, cable TV, parking. ideal for families.
743-4783

**43V5
VACATION RENTALS**

**LONG BEACH ISLAND-
Summer Rental Head-
quarters Inlet (Barnegat
Light) to Inlet (Beach
Haven). Choice selection
NOW available. Season,
month or week. Call
Lackey Realty, Inc. 1-
(609) 494-4511, 1-(609) 494-
8500 or 1-(609) 499-7000.**

**LONG BEACH ISLAND-
Specializing in North
Beach Harvey Cedars,
Loveladies and Barnegat
Light. Summer Rentals
from the Modest To The
Magnificent. Hill As-
sociates, Realtors 1-609-
494-2300**



THE
LOW PRICE
LEADER!

SAVE UP TO 33%

ON SELECTED BEEF CUTS DURING OUR BIG

Beef Extravaganza



Look For Our New
Color Circular
If you have not received one in
the mail or in your local news-
paper, pick one up at your
nearest ShopRite while sup-
plies last.

U.S.D.A. CHOICE BEEF, DECKLE OFF

Oven Ready Rib Roast

SAVE 1.20 A LB.

1.99

lb.

USDA CHOICE

SAVE .40 A LB. U.S.D.A. CHOICE BONELESS BEEF

Top Round Roast

USDA CHOICE

2.19

lb.

SAVE .70 A LB. THIN CUT

Fresh Beef Brisket

USDA CHOICE

2.29

lb.

NOT LESS THAN 80%

Lean Ground Beef

ANY SIZE PKG.

SAVE .30 A LB.

1.39

lb.

SAVE .70 A LB. BEEF LOIN TOP BUTT

Boneless Sirloin Steak

USDA CHOICE

2.49

lb.

SAVE 1.00 A LB. TAILLESS BEEF LOIN

Porterhouse or T-Bone Steak

USDA CHOICE

3.49

lb.

Fresh Fish Market

CUT FROM U.S. GRADE 'A' NEW ENGLAND

Fresh Cod Fish Steak

lb.

2.29

STORE SLICED, PREV. FROZEN, CLIPPER SHIP

Mako Shark Steak

lb.

3.99

FROZEN & THAWED, 41-50 PER LB.

Medium Shrimp

lb.

5.99

The Dairy Place

ShopRite

Premium Orange Juice

1/2-gal. cart.

1.59

REG., LITE OR UNSALTED CORN OIL

Fleischmann's Margarine

1-lb. pkg.

.99

AMERICAN

Borden Singles

12-oz. pkg.

1.39

The Deli Place

REG., THICK OR MAPLE

ShopRite Sliced Bacon

1-lb. pkg.

1.49

WHY PAY MORE?

Hygrade's Hot Dogs

1-lb. pkg.

.99

WHOLE OR ICICLES

Claussen Pickles

1-qt. jar

1.59

The Frozen Food Place

ShopRite GRADE 'A' CHOPPED BROCCOLI, CARROTS.

Cauliflower or Broccoli Spears

10-oz. pkgs.

2.99

9 SLICE

Ellio's Cheese Pizza

24-oz. pkg.

1.99

ASST. VAR. "SLIM LINE" BUDGET

Gourmet Entrees

9.1-oz. pkg.

1.49

ASST. FLAVORS INCL. CUBIC, SCOOPS, CANDY DISH & SHERBET

Sealtest Ice Cream

2-gal. cart.

1.99

THE SESAME STREET

TREASURY

FEATURING JIM HENSON'S SESAME STREET MUPPETS

VOL. #7 ON SALE THIS WEEK

2.69

VOL. #1 STILL ONLY .69

ShopRite Coupon

WITH THIS COUPON

ONE 15 LB. BAG REGULAR OR UNBLEACHED

ShopRite Flour

.49

Coupon good at any ShopRite Market. Limit one per family. Effective Sun., Mar. 29 thru Sat., Apr. 4, 1987.

SAVE .20

U.S.D.A. CHOICE BEEF

Boneless Bottom Round Roast

SAVE .90 A LB.

1.59

lb.

USDA CHOICE

ShopRite TRIM 'n LEAN™

Now...All Beef Trimmed To 1/8" or Less Exterior Fat

U.S.D.A. CHOICE BEEF

Top Round London Broil

SAVE .80 A LB.

USDA CHOICE

2.29

lb.

SAVE .70 A LB. BEEF LOIN BONE IN

Tailless Shell Steak

USDA CHOICE

3.49

lb.

SAVE .50 A LB. TAILLESS BEEF LOIN

Boneless Shell Steak

USDA CHOICE

4.49

lb.

The Grocery Place

REG., UNBLEACHED OR BREAD

Pillsbury Flour

5-lb. bag

69

PRICE BREAK

Glad Lawn Bags

10-cl. pkg.

.99

REG. 1.99

Glad Lawn Bags

10-cl. pkg.

.99

WINDOW CLEANER REFILL

S.O.S. Glass Works

2-qt. 3.5 oz. btl.

1.49

BON AMI

Glass Cleaner

15-oz. can

.74

REG. OR SCENT II DISINFECTANT

Lysol Spray

12-oz. can

1.99

REG. OR LEMON

Fantastik Cleaner

1-pt. 6 oz. btl.

.99

WELCH'S GRAPE JAM OR

Grape Jelly

2-lb. jar

.99

ShopRite CLEAR OR NATURAL

Apple Juice

1/2-gal. btl.

.99

The Produce Place

BLACK OR RED OR GREEN

Seedless Grapes

lb.

.89

88 SIZE SUNKIST

Navel Oranges

for

5.99

40 SIZE WHITE

Florida Grapefruit

4 for

.99

JUICY SUNKIST

Navel Oranges

4-lb. bag

1.89

EX. PANCY WASH. STATE 100 SIZE GOLD OR 99 100 SIZE

Red Delicious Apples

lb.

.79

80 SIZE JUICY

Florida Oranges

6 for

.99

IMPORTED FROM CHILE, 113 SIZE

Granny Smith Apples

lb.

.89

ShopRite Coupon

WITH THIS COUPON

ONE 114 PK. OF NORTHERN

Bathroom Tissue

.89

Coupon good at any ShopRite Market. Limit one per family. Effective Sun., Mar. 29 thru Sat., Apr. 4, 1987.

SAVE .30

U.S.D.A. CHOICE BEEF

Boneless Rump Of Beef Roast

SAVE .90 A LB.

1.79

lb.

USDA CHOICE

ShopRite TRIM 'n LEAN™

Now...All Beef Trimmed To 1/8" or Less Exterior Fat

CENTER CUT, DECKLE OFF

Beef Rib Steak

SAVE 1.40 A LB.

USDA CHOICE

1.99

lb.

SAVE 1.00 A LB. BEEF RIB

Boneless Club Steak

USDA CHOICE

3.99

lb.

SAVE 1.30 A LB. BONE IN

Beef Rib Club Steak

USDA CHOICE

2.99

lb.

The Appy Place

PRICE BREAK

Master Blend

13-oz. can

1.49

ALL VAR. EX. BLUE CHEESE

Wishbone Salad Dressing

1-pt. btl.

.99

SUNSHINE

Chip-A Roos

1-lb. box

.99

#14

Prince Lasagna

1-lb. box

.59

#5 SPAGHETTI, #5 THIN SPAGHETTI, #5 ELBOWS OR #3 ZITI

Prince Pasta

3-lb. boxes

1.00

GREEN GIANT

LeSueur Peas

1-lb. 1 oz. can

.49

ShopRite

Cranberry Sauce

3-lb. cans

1.00

CHUNK LIGHT, IN OIL OR WATER

ShopRite Tuna

2 6 1/2-oz. cans

.99

General Merchandise

10W30 OR 10W40

Mobil Motor Oil

13 MFG. REBATE AVAIL. ON CASE OF 12 1-qt. conts.

79

HIGH GRADE BLANK T-120 FOR VHS ONLY

Nippon Video Cassette

ea.

3.69

BAKERS SECRET (BUY 15 FOR \$3.95 GET 13 FREE)

Cookie Sheet

13" x 15" both

3.99

2 MFG. REBATE AVAIL.

Armor All Protectant

32-oz. cont.

6.99

TENDER FULL TIPS

California Asparagus

lb.

1.19

CRISP & CRUNCHY

Fresh Celery

bch.

.59

VITAMINS A & C

Crisp Spinach

10-oz. pkg.

.99

TENDER CALIF.

Romaine Lettuce

lb.

.59

ALL NATURAL

Firm Toh-ma-toes

18-oz. pkg.

1.59

ALL NATURAL, BULK

Snow White Mushrooms

lb.

1.39

ShopRite Coupon

WITH THIS COUPON

ONE (1) SET OF JOHANN HAVILAND

Salad Plate Set

8.99

Coupon good at any ShopRite Market. Limit one per family. Effective Sun., Mar. 29 thru Sat., Apr. 4, 1987.

SAVE 3.00

U.S.D.A. CHOICE BONELESS BEEF

Seamed Eye Round Roast

SAVE .80 A LB.

2.19

lb.

USDA CHOICE

SAVE .50 A LB. THE ORIG. LONDON BROIL

Beef Flank Steak

USDA CHOICE

3.49

lb.

SAVE .40 A LB. NOT LESS THAN 85%

Extra Lean Ground Beef

ANY SIZE PKG.

1.79

lb.

WHOLE TRIMMED

Corned Beef Brisket

5-7 LBS.

USDA CHOICE

1.19

lb.

SAVE .80 A LB. BEEF CHUCK

Boneless Pot Roast

USDA CHOICE

1.69

lb.

SAVE .80 A LB.

Beef Shoulder London Broil

USDA CHOICE

1.99

lb.

The Bakery Place

STORE SLICED

Turkey Breast

lb.

3.99

STORE SLICED DOMESTIC

Swiss Cheese

lb.

2.99

STORE SLICED

ShopRite Bologna

lb.

1.49

The Bakery Place

SANDWICH OR ROUNDTOP

Country Hearth White Bread

22-oz. loaf

.49

HARVEST PRIDE SLICED

Italian Bread

16-oz. loaf

.49

YORK NACHO TORTILLAS, CHEESE CURLS OR

Corn Chips

12-oz. pkg.

.89

Health & Beauty Aids

1/3 OFF OR MORE ON OUR ALREADY DISCOUNTED PRICES OF

MAYBELLINE COSMETICS

REG. OR REG. THIN 30'S THINS SUPER 27'S OR PROFILE 24'S

Kotex Maxi Pads

your choice

2.59

REG. 9.0Z. GEL 8.0Z. OR TARTAR OR TARTAR GEL 8.0Z.

Colgate Toothpaste

your choice

1.79

General Merchandise

10W30 OR 10W40

Mobil Motor Oil

13 MFG. REBATE AVAIL. ON CASE OF 12 1-qt. conts.

79

HIGH GRADE BLANK T-120 FOR VHS ONLY

Nippon Video Cassette

ea.

3.69

BAKERS SECRET (BUY 15 FOR \$3.95 GET 13 FREE)

Cookie Sheet

13" x 15" both

3.99

2 MFG. REBATE AVAIL.

Armor All Protectant

32-oz. cont.

6.99

JOHANN HAVILAND

Porcelain China

NOW AT PRICES 40% LESS THAN DEPT. STORE PRICES FOR COMPARABLE CHINA ON OUR SPECIAL STAMP LAYAWAY PLAN

Here's Our Plan:

With each \$3 purchase (excluding items provided by law you may buy extra stamps for only)

.99

Collect 36 stamps then redeem them for a 20 piece set consisting of four 5-piece place settings. China and crystal accessories are also available.

ShopRite Coupon

WITH THIS COUPON

ONE (1) JOHANN HAVILAND, CHINA

Vegetable Bowl

16.99

Coupon good at any ShopRite Market. Limit one per family. Effective Sun., Mar. 29 thru Sat., Apr. 4, 1987.

SAVE 6.00